



**TULSA PUBLIC
SCHOOLS**

**ORGANIZATIONAL CHARTS
2016-2017**

TULSA PUBLIC SCHOOLS ORGANIZATIONAL CHARTS

TABLE OF CONTENTS

	PAGE NUMBER		PAGE NUMBER
BOARD OF EDUCATION	1	FINANCIAL SERVICES	16-21
OFFICE OF THE SUPERINTENDENT	1	➤ ACCOUNTING	17
❖ DEPUTY SUPERINTENDENT	2	➤ BOND PROJECTS / ENERGY MANAGEMENT.....	16
➤ COMMUNICATIONS.....	2	➤ BUDGET.....	16
▪ MEDIA RELATIONS.....	2	➤ FEDERAL PROGRAMS AND SPECIAL PROJECTS.....	18
➤ DISTRICT PERFORMANCE.....	2	▪ GRANT COMPLIANCE.....	18
➤ ORGANIZATIONAL LEARNING AND EQUITY.....	2	▪ GRANT WRITER.....	18
❖ DATA STRATEGY AND ANALYTICS	3	▪ TITLE I.....	18
❖ DESIGN AND INNOVATION	2	➤ FINANCE / TREASURER	19
❖ CHIEF LEARNING OFFICER	4-6	▪ FACILITIES UTILIZATION.....	19
➤ EDUCATOR EFFECTIVENESS AND PROFESSIONAL LEARNING ..	4	▪ SCHOOL ACTIVITY.....	19
▪ NEW TEACHER SUPPORT.....	4	➤ MATERIALS MANAGEMENT (PURCHASING).....	20
▪ PROFESSIONAL LEARNING.....	4	▪ MAIL SERVICES.....	20
➤ LANGUAGE AND CULTURAL SERVICES.....	4	▪ WAREHOUSE.....	20
▪ DUAL LANGUAGE AND IMMERSION.....	4	➤ PAYROLL.....	21
▪ ENGLISH LANGUAGE DEVELOPMENT.....	4	❖ INFORMATION AND OPERATIONS	22-29
▪ INDIAN EDUCATION.....	4	➤ CAMPUS POLICE AND SECURITY SERVICES.....	24
▪ LANGUAGE INTERPRETATION.....	4	➤ CHILD NUTRITION SERVICES.....	25
➤ PERSONALIZED LEARNING.....	4	➤ MAINTENANCE AND PLANT OPERATIONS.....	26-27
➤ TITLE III.....	4	➤ TRANSPORTATION.....	28
TEACHING AND LEARNING	5	➤ ENROLLMENT AND STUDENT INFORMATION.....	29
➤ DUAL ENROLLMENT.....	5	▪ DISTRICT REGISTRARS.....	28
➤ FINE ARTS.....	5	▪ STUDENT TRANSFERS.....	28
➤ GIFTED AND TALENTED.....	5	INFORMATION TECHNOLOGY	23
➤ HUMANITIES.....	5	➤ BUSINESS SERVICES.....	23
➤ MATH AND SCIENCE.....	5	➤ CLIENT SERVICES.....	23
➤ SECONDARY PATHWAYS.....	5	➤ INFORMATION SERVICES (APPLICATIONS).....	23
SPECIAL EDUCATION	6	➤ OPERATIONS AND SUPPORT.....	23
❖ CHIEF OF SCHOOLS	7-15	➤ SERVICE DESK.....	23
➤ INSTRUCTIONAL LEADERSHIP DIRECTORS.....	8-14	❖ TALENT MANAGEMENT	30
▪ SECONDARY SCHOOL STUDENT ACTIVITIES/ATHLETICS.....	7	➤ CERTIFIED TALENT.....	30
○ HELMZAR CHALLENGE COURSE.....	7	➤ COMPENSATION AND BENEFITS.....	30
➤ STUDENT AND FAMILY SUPPORT SERVICES	15	➤ HUMAN RIGHTS.....	30
▪ ALTERNATIVE PROGRAMS.....	15	➤ SCHOOL TALENT MANAGEMENT.....	30
▪ BEFORE AND AFTER CARE PROGRAMS.....	15	➤ SUPPORT TALENT.....	30
▪ CULTURE AND CLIMATE.....	15	❖ GENERAL COUNSEL	31
▪ FAMILY AND COMMUNITY ENGAGEMENT.....	15	➤ STAFF ATTORNEY.....	31
▪ GRADUATION SUCCESS.....	15	➤ WORKERS' COMPENSATION ATTORNEY.....	31
▪ HEALTH AND WELLNESS.....	15	➤ CHARTER AND PARTNERSHIP SCHOOLS.....	31
▪ HOMELESS EDUCATION.....	15		
▪ STUDENT AND FAMILY ADVOCACY.....	15		
▪ STUDENT ENGAGEMENT.....	15		

BOARD OF EDUCATION
Cindy Decker, Ruth Ann Fate, Shawna Keller, Gary Percefull,
Suzanne Schreiber, Amy Shelton, Lana Turner-Addison

SUPERINTENDENT
Deborah A. Gist

DEPUTY SUPERINTENDENT
Paula Shannon

**ADMINISTRATIVE SERVICES
MANAGER**
Sarah Bozone
(Shared with Deputy Superintendent)

CLERK OF THE BOARD
Cindy Hutchings

**EXECUTIVE ADMINISTRATIVE
ASSISTANT/DEPUTY CLERK OF
THE BOARD**
Michelle Reed

**DESIGN AND
INNOVATION OFFICER**
(Donor Funded)
Vacancy

**CHIEF ANALYTICS
OFFICER**
Stephen Fedore

**CHIEF LEARNING
OFFICER**
Devin Fletcher

CHIEF OF SCHOOLS
Errick Greene

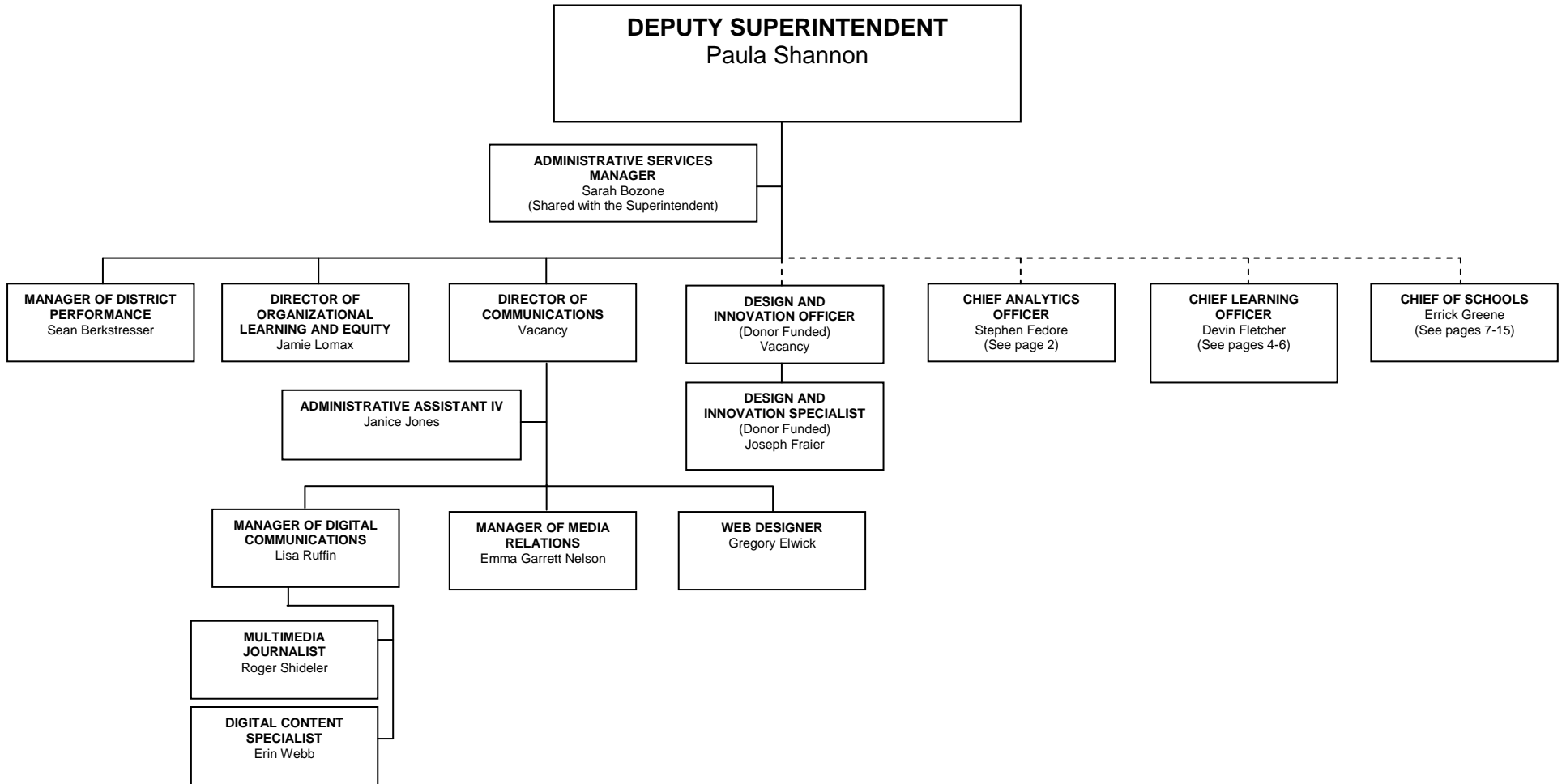
**CHIEF FINANCIAL
OFFICER**
(Interim)
Kay Schmitz

**CHIEF INFORMATION
AND OPERATIONS
OFFICER**
Blaine Young

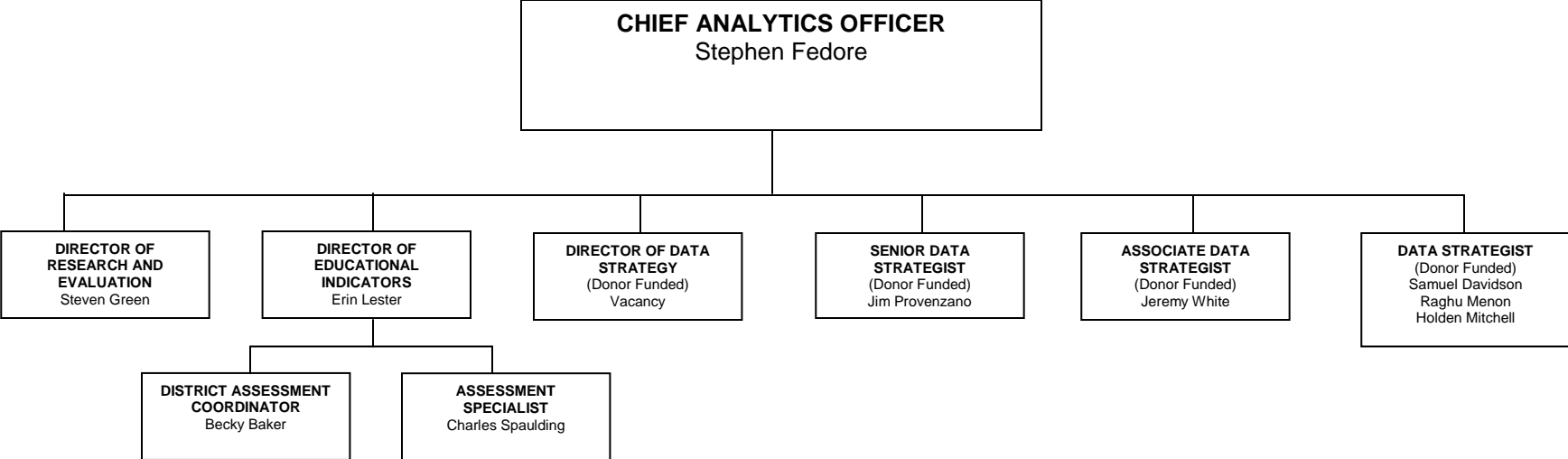
**CHIEF TALENT
OFFICER**
Talia Shaull

GENERAL COUNSEL
Jana Burk

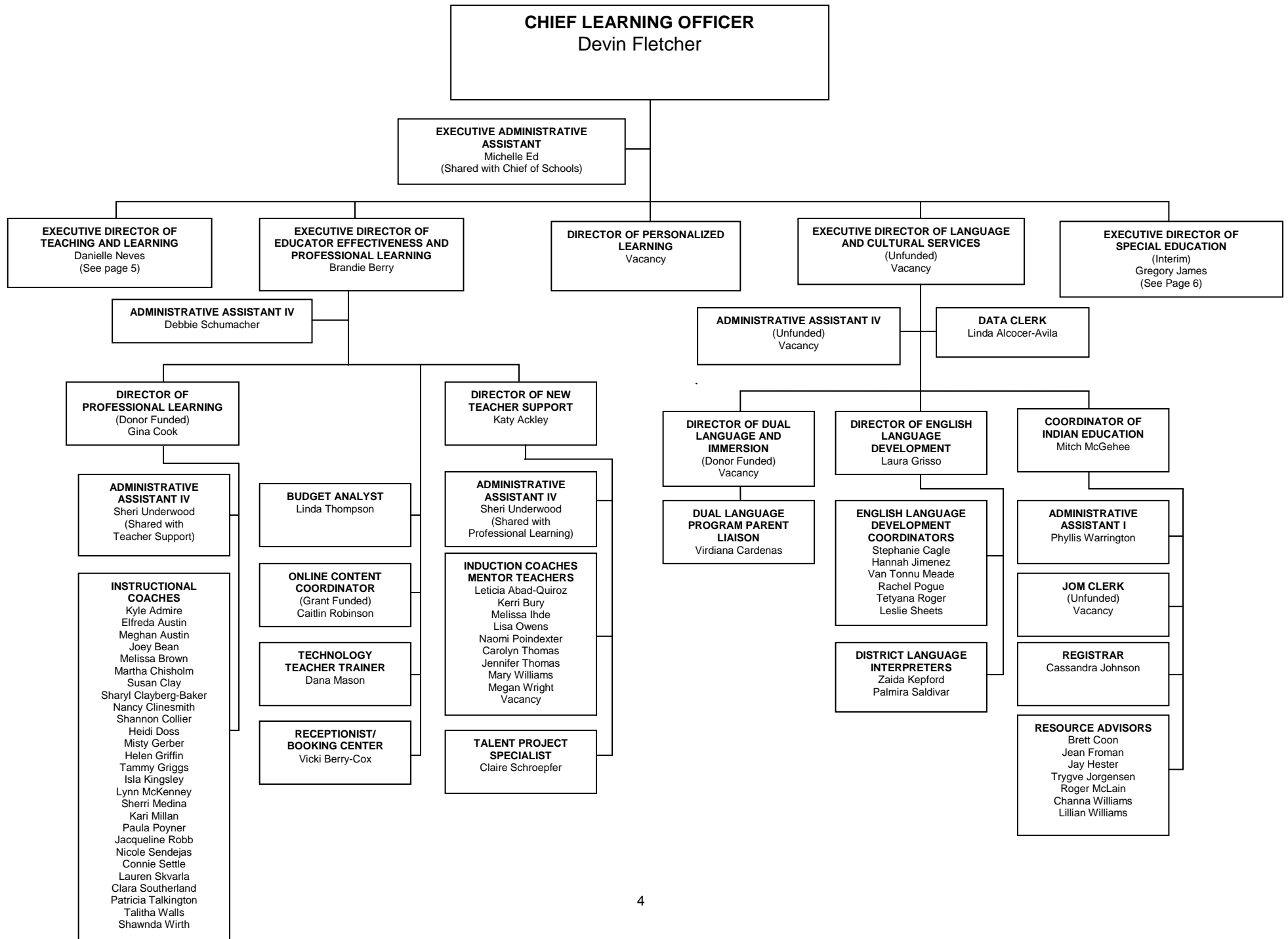
DEPUTY SUPERINTENDENT



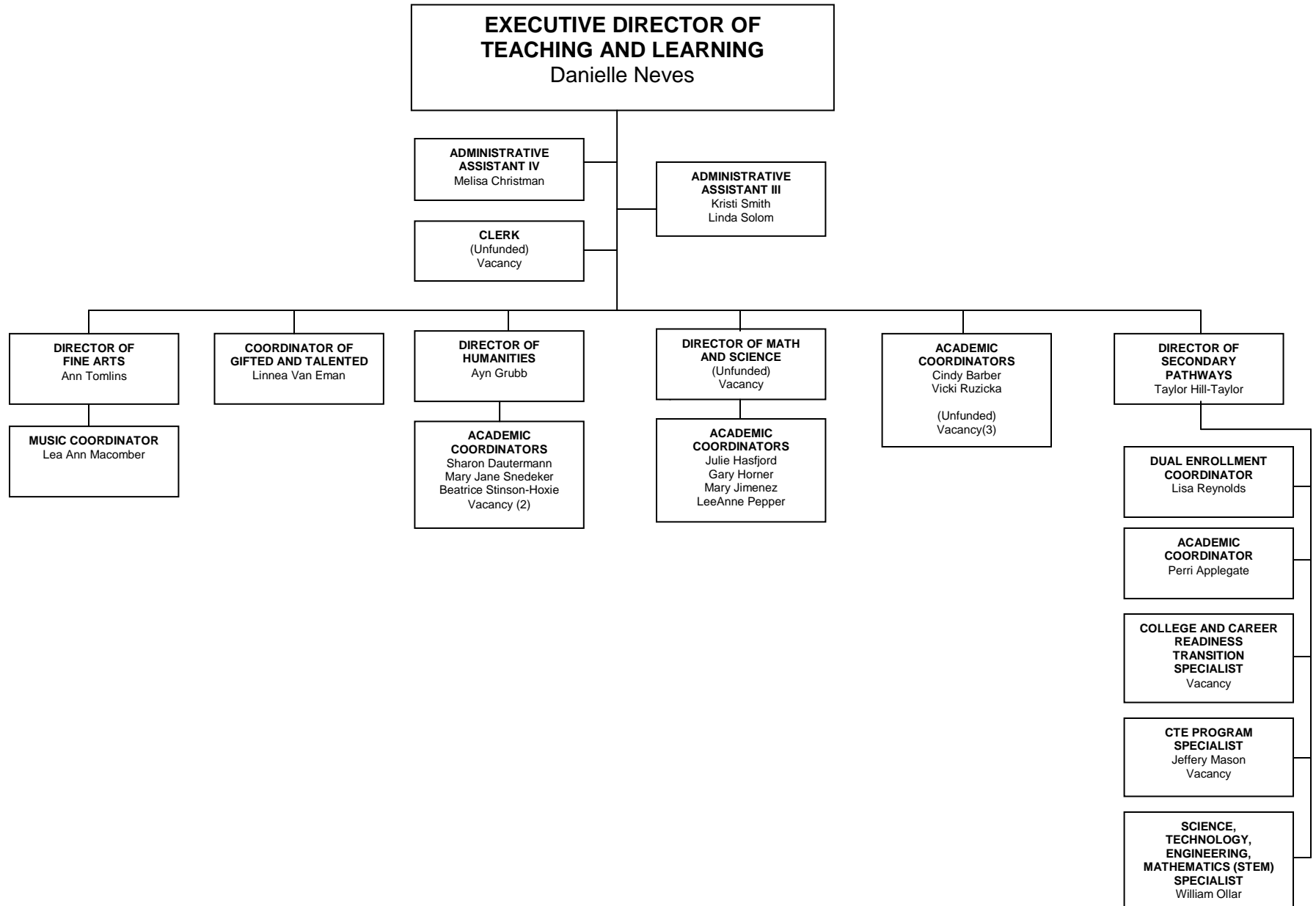
DATA STRATEGY AND ANALYTICS OFFICE



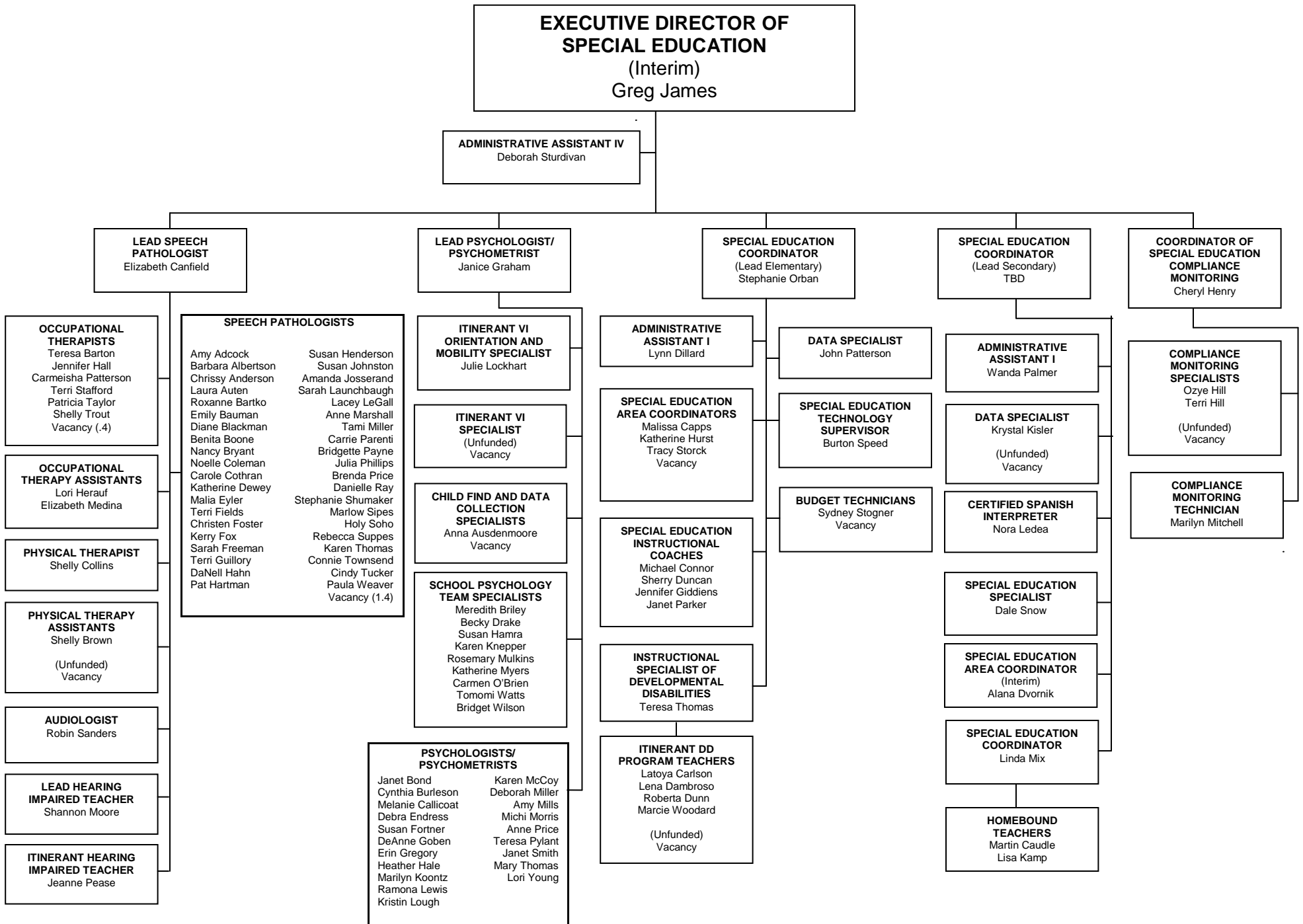
TEACHING AND LEARNING OFFICE



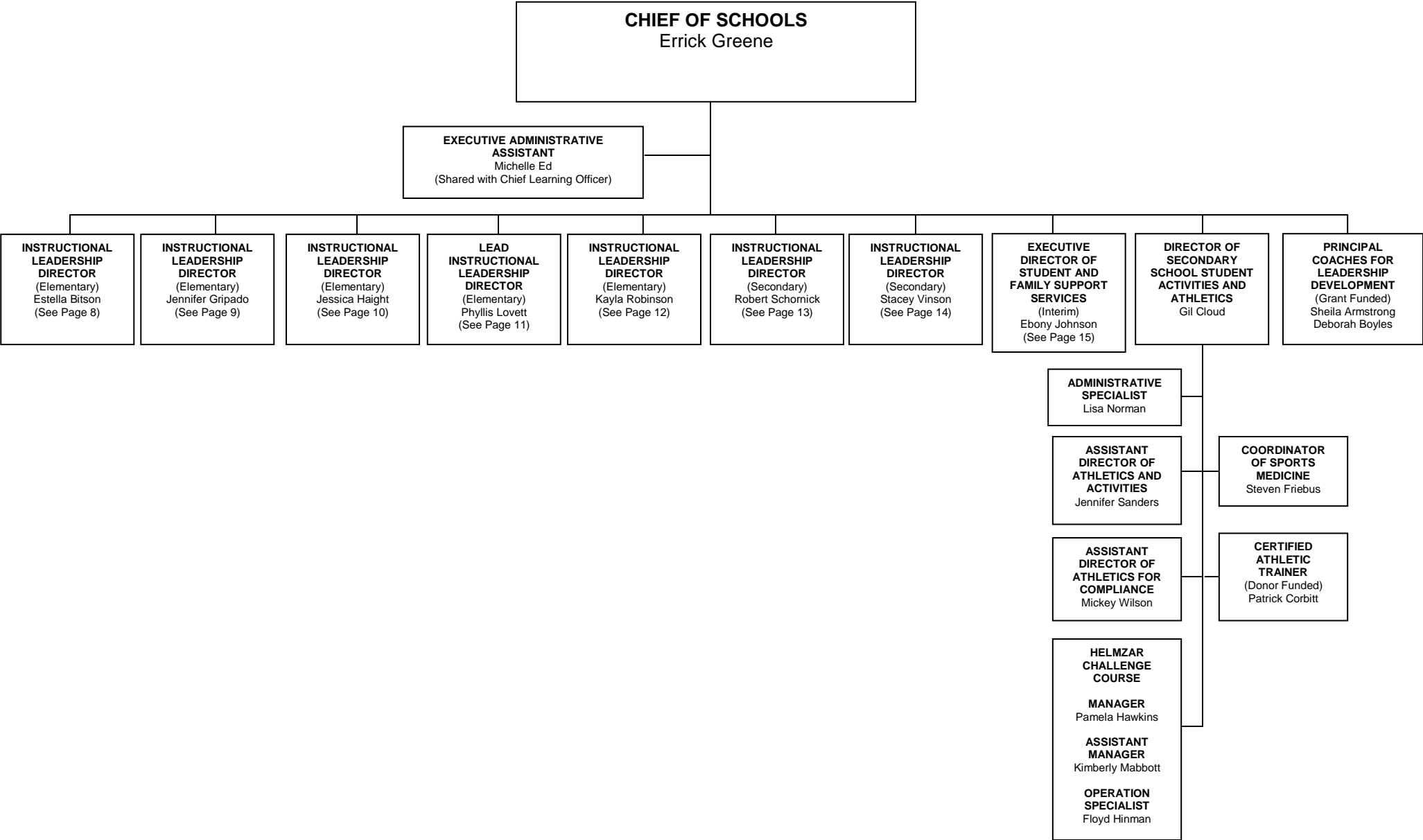
TEACHING AND LEARNING OFFICE



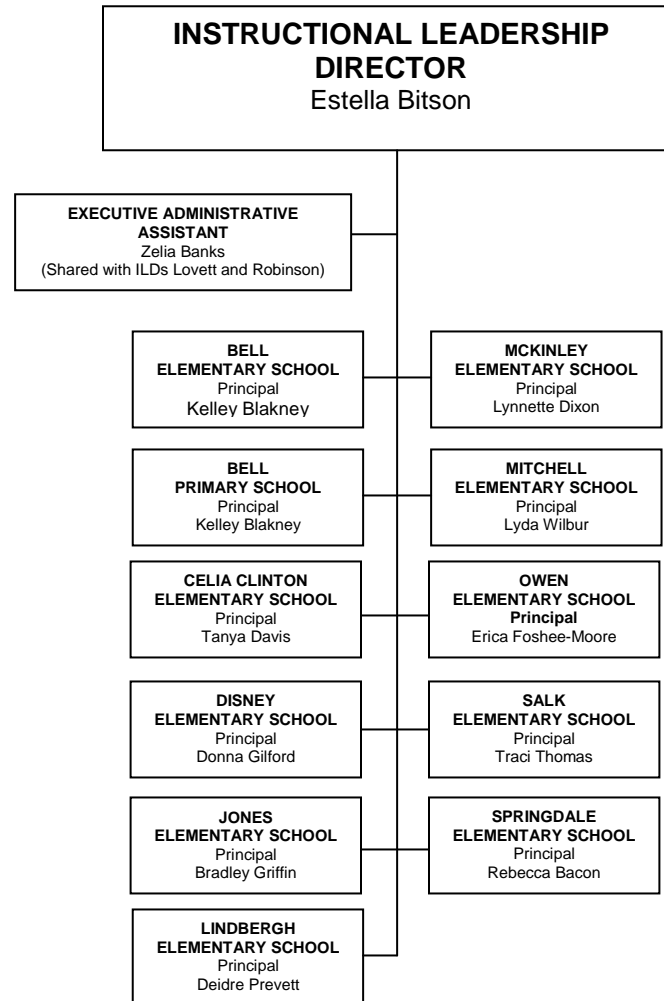
SPECIAL EDUCATION OFFICE



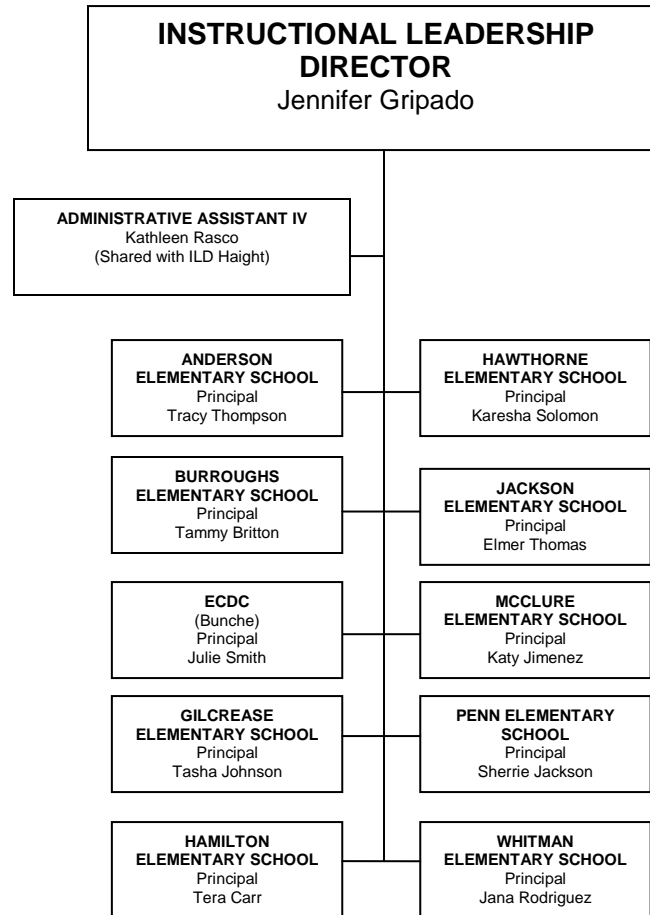
CHIEF OF SCHOOLS



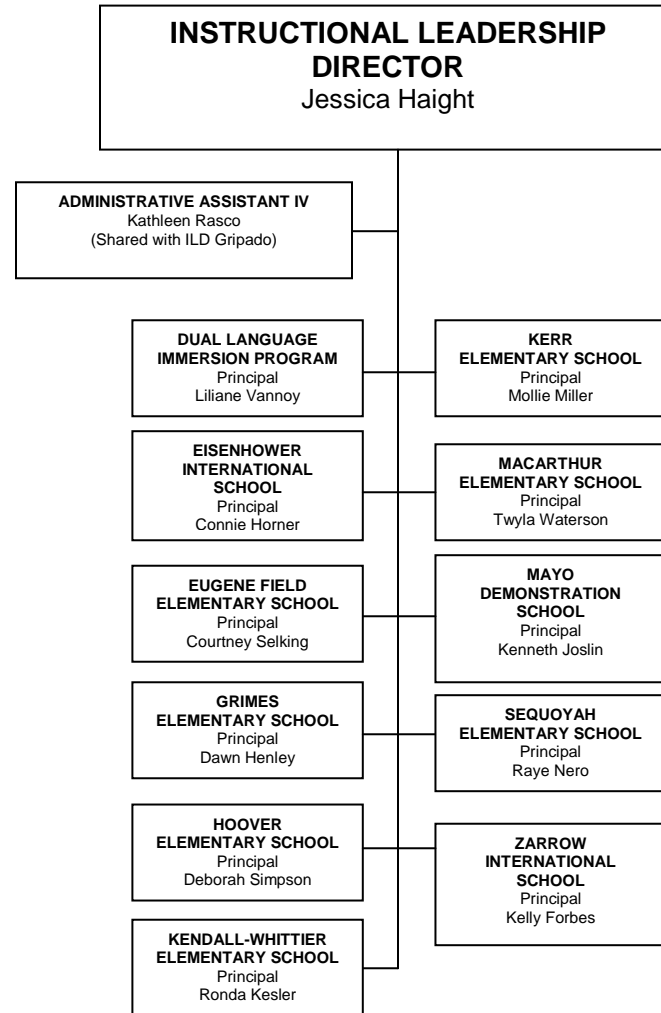
INSTRUCTIONAL LEADERSHIP



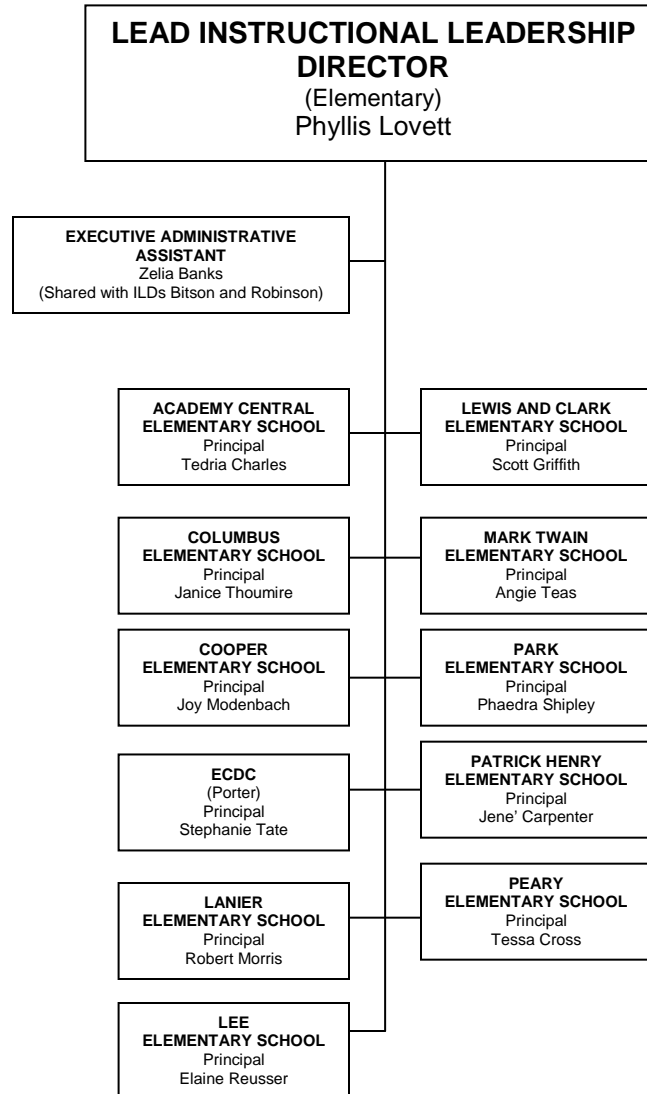
INSTRUCTIONAL LEADERSHIP



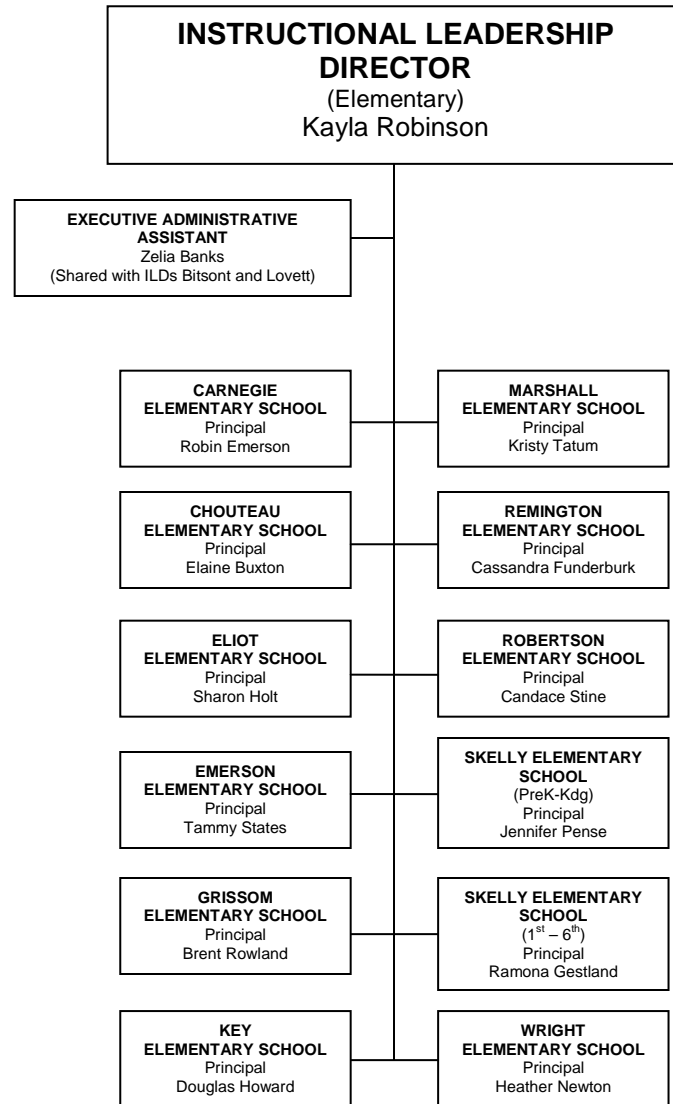
INSTRUCTIONAL LEADERSHIP



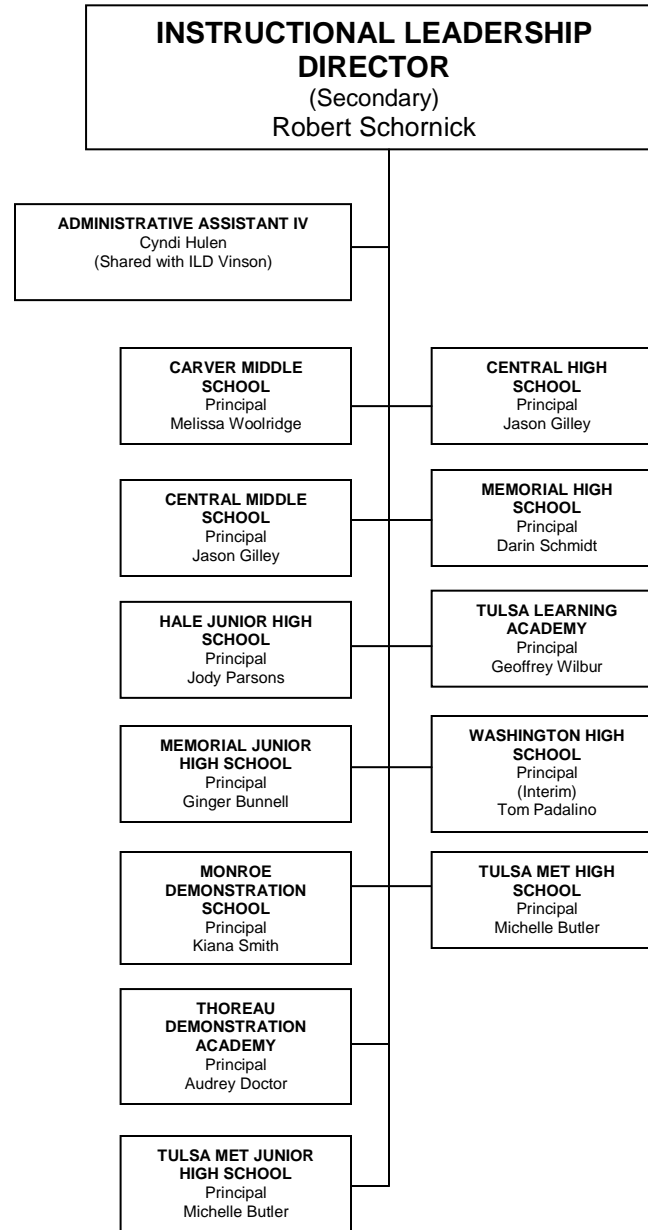
INSTRUCTIONAL LEADERSHIP



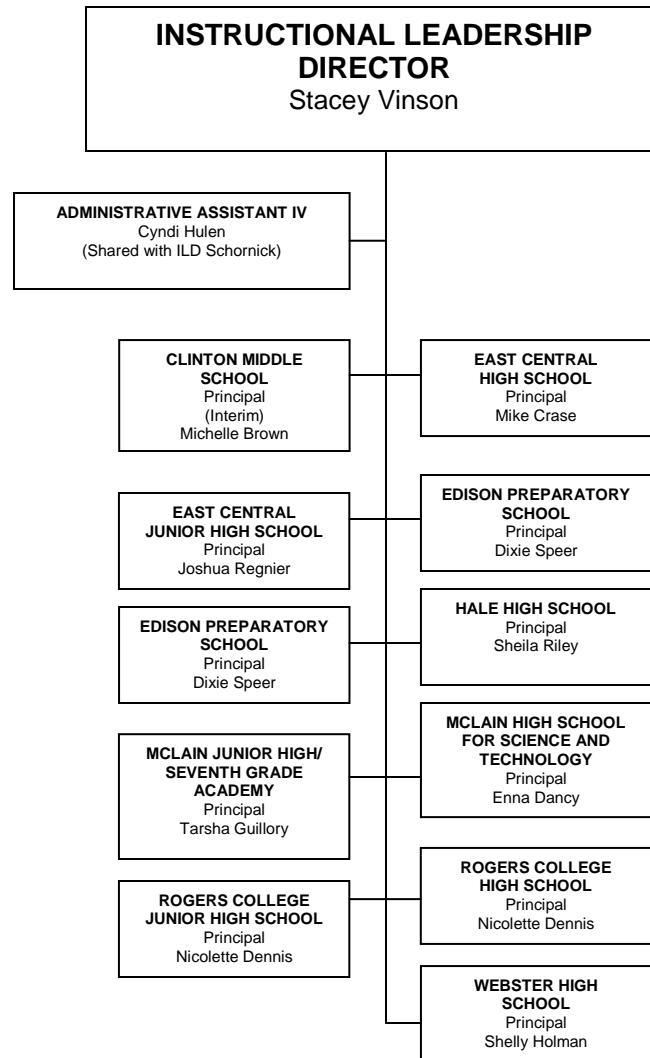
INSTRUCTIONAL LEADERSHIP



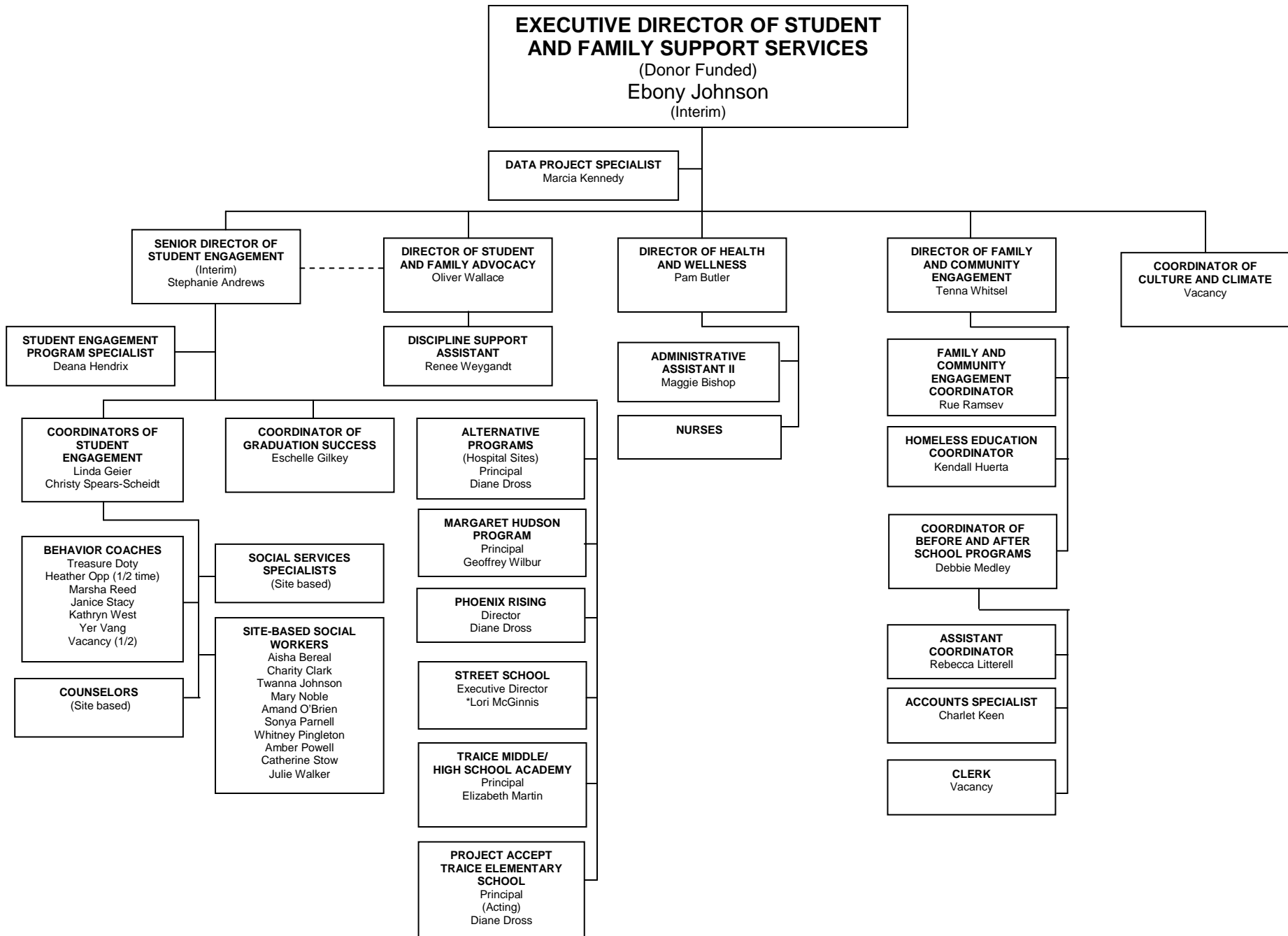
INSTRUCTIONAL LEADERSHIP



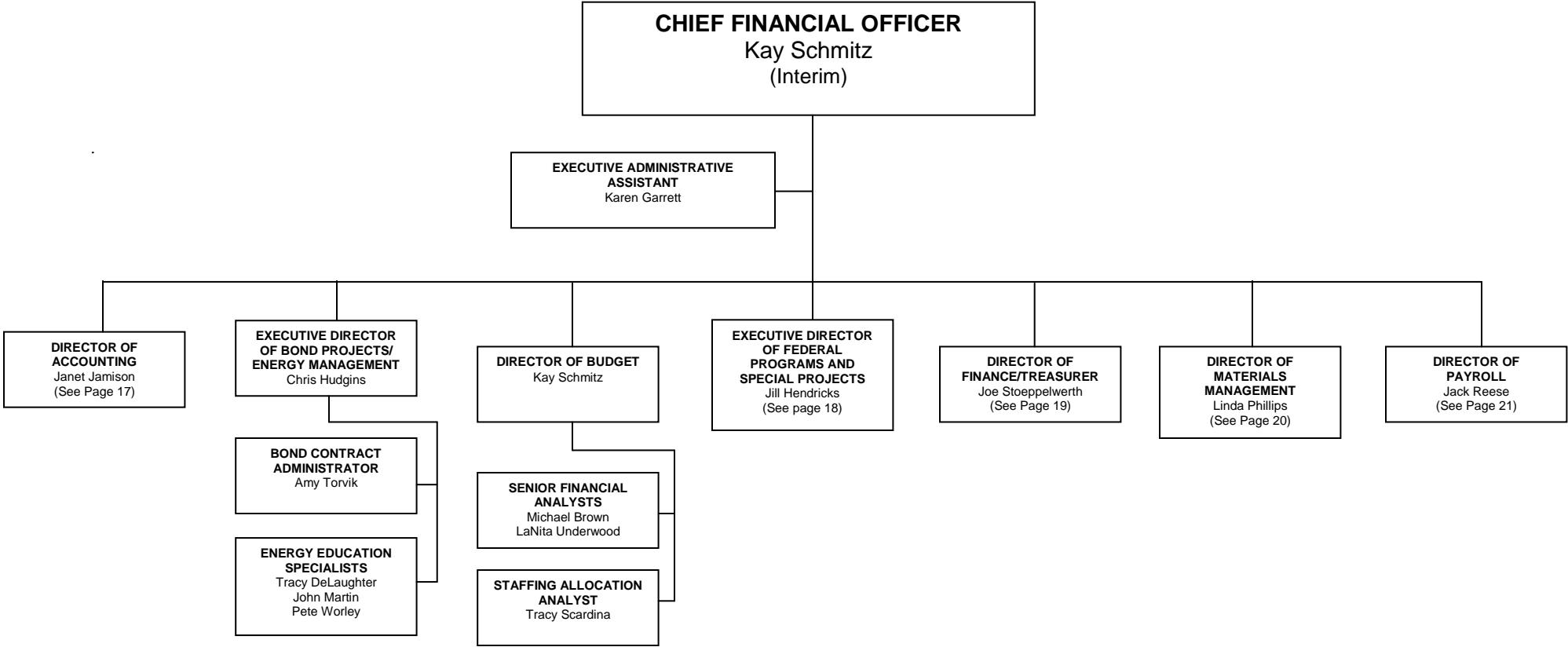
INSTRUCTIONAL LEADERSHIP



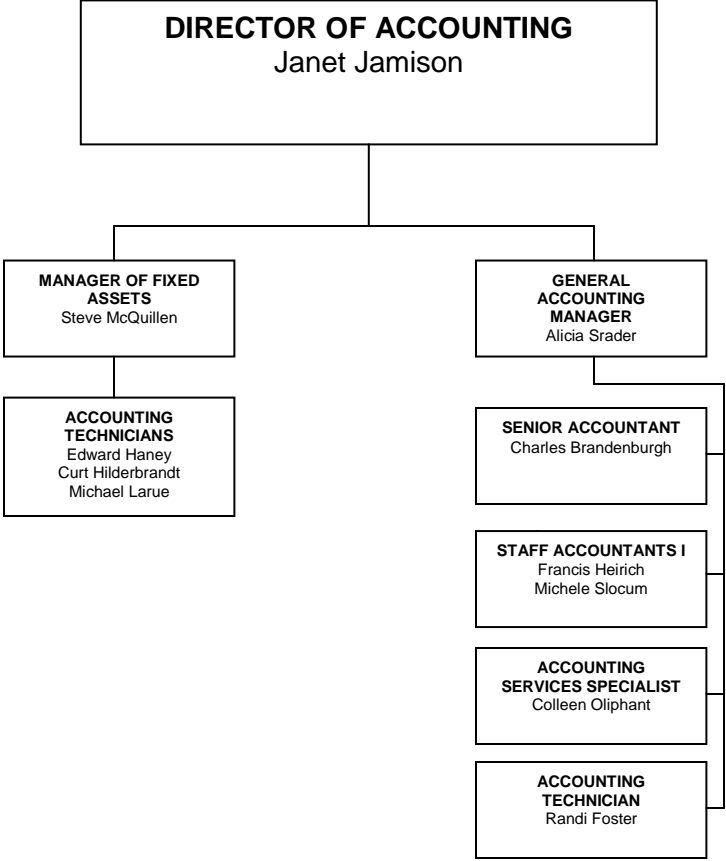
STUDENT AND FAMILY SUPPORT SERVICES



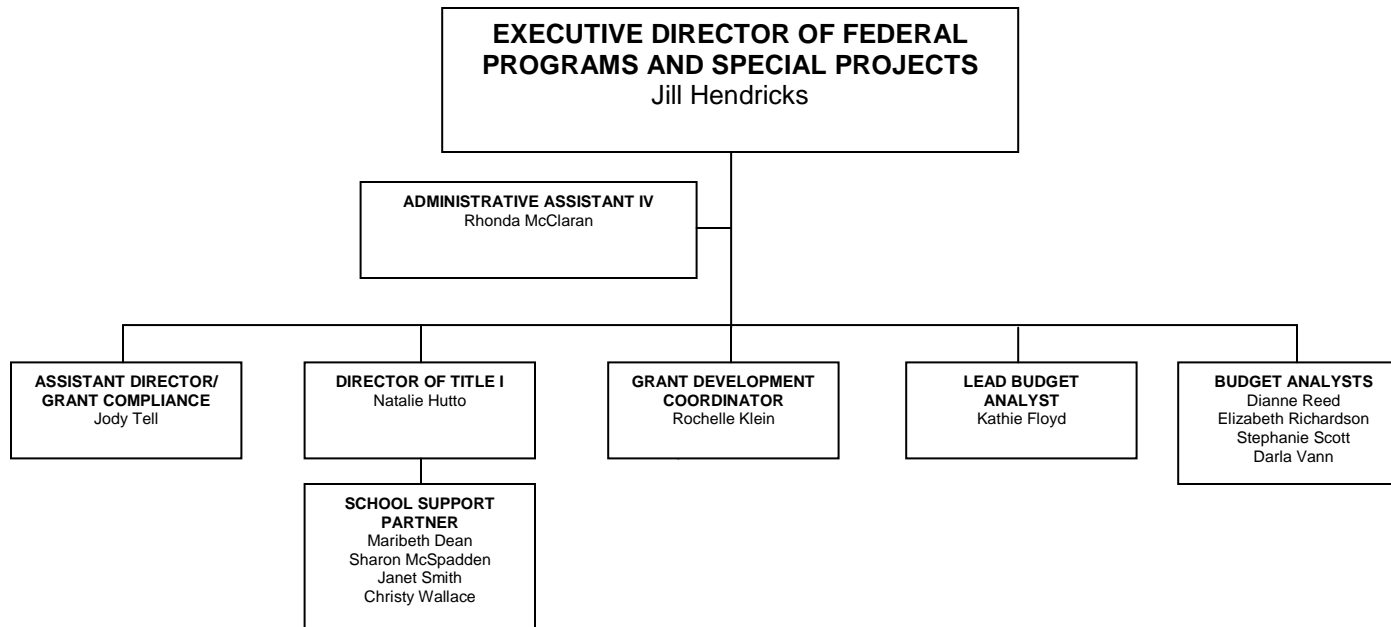
FINANCIAL SERVICES



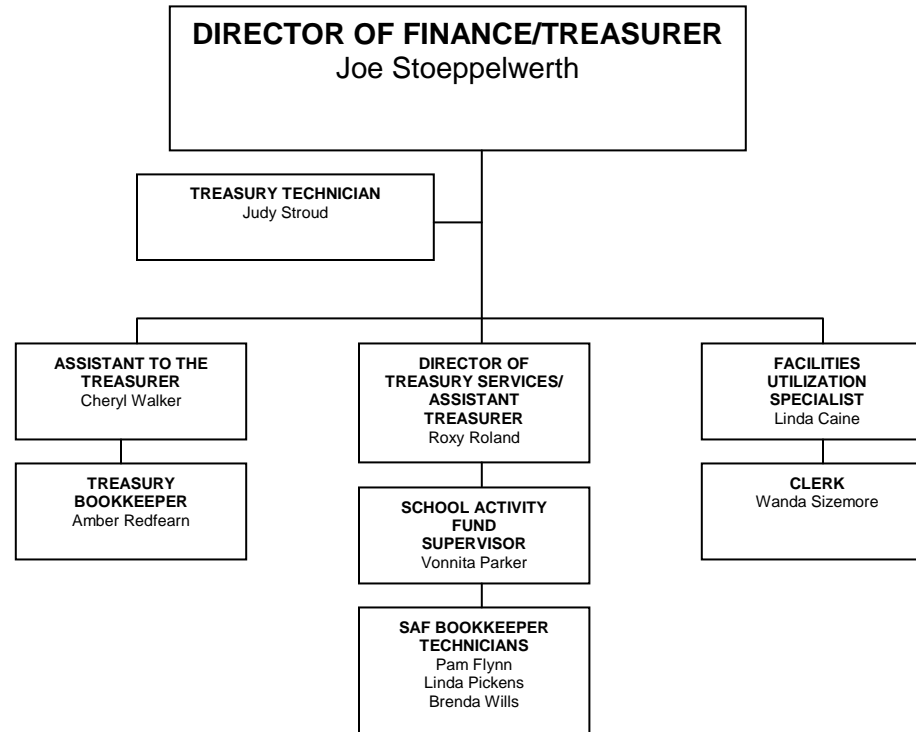
ACCOUNTING OFFICE



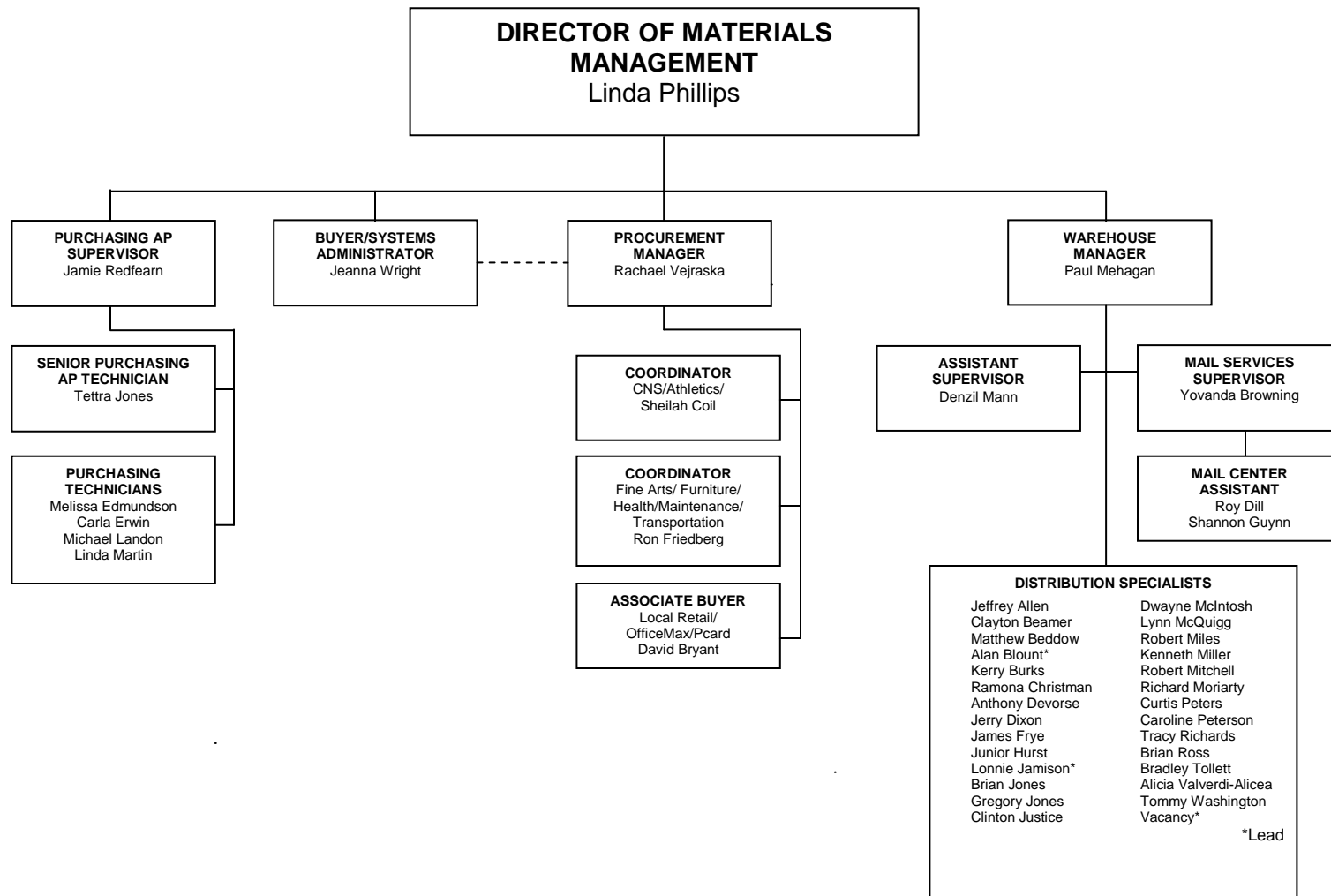
FEDERAL PROGRAMS AND SPECIAL PROJECTS OFFICE



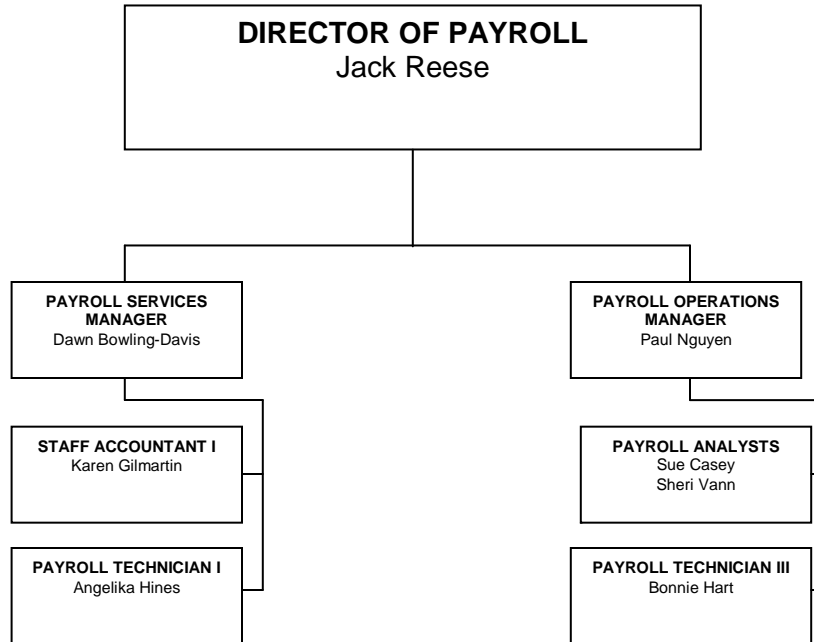
FINANCE / TREASURER'S OFFICE



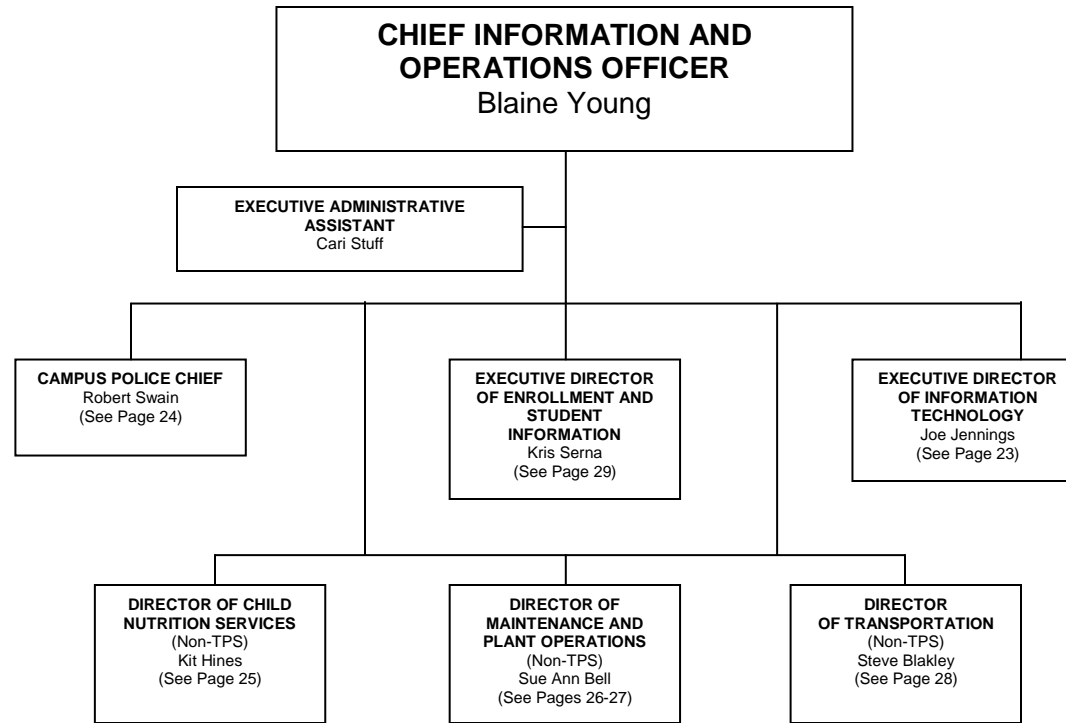
MATERIALS MANAGEMENT OFFICE



PAYROLL OFFICE



INFORMATION AND OPERATIONS



INFORMATION TECHNOLOGY

**EXECUTIVE DIRECTOR OF
INFORMATION TECHNOLOGY**
Joe Jennings

ADMINISTRATIVE ASSISTANT IV
(Unfunded)
Vacancy

BUSINESS SERVICES

**DIRECTOR OF
BUSINESS SERVICES**
Charlotte Manning

PROJECT MANAGER
Vacancy

PROJECT COORDINATOR
Brenda Estes
(non-TPS)

PROJECT MANAGER
Jim Williams
(non-TPS)

PROJECTS ADMINISTRATOR
Orbie Edwards

ADMINISTRATIVE ANALYST
Jeana Gee

PRINT CENTER
(Non-TPS)

SERVICE DELIVERY MANAGER
Tom Fogger

GRAPHIC DESIGNER
John Morgan

SENIOR ONSITE SPECIALIST
Jim Stone

SUPPORT SPECIALIST
Amanda Watkins

COURIER
Terry Burwell

CLIENT SERVICES

TECHNICAL SERVICES MANAGER
Robert Burton, Jr.

AUDIO/VIDEO TECHNICIAN
Ben Tippin*
Kevyn Rutherford
Matthew Strauss
Gary Winstone
*Lead

NETWORK TECHNICIANS
Roger Collier
Aaron Gallion
David Lower
Matthew Reed
Tim Youngblood*
*Lead

PC TECHNICIANS
Justin Aldrich
Micah Beasley
Kenneth Brewer*
Dennis Harlien
Michael Helt
Daniel Hollaway
Michael Mays
Jerrold Walden
Matthew Wilkins
*Lead

INFORMATION SERVICES (Applications)

**DIRECTOR OF
APPLICATION DEVELOPMENT**
Scott Bollin

**MANAGER OF BUSINESS
INTELLIGENCE**
Vacancy

APPLICATION PROGRAMMERS
Genie Howard
Tracy Kouns
John Lanford
Tammy Palmer
Mark Thomas

**APPLICATION SUPPORT
ANALYSTS**
Christopher Compton
Charlette Fisher
Kevin Hess
Joshua Myers
Terri Wensman

**SENIOR DATABASE
ADMINISTRATOR**
Dail Summers

OPERATIONS AND SUPPORT (Infrastructure)

**DIRECTOR OF
INFORMATION SYSTEMS
SERVICES OPERATIONS**
Tracy McGee

DATA ENGINEER II
Charles Diebold

**NETWORK SYSTEMS
ENGINEERS II**
Willie Wesley
Vacancy

**NETWORK SYSTEMS
ENGINEER I**
Kevin Williams

TELECOM ENGINEER II
William Myers

SERVICE DESK

SERVICE DESK SUPERVISOR
Linda Drink

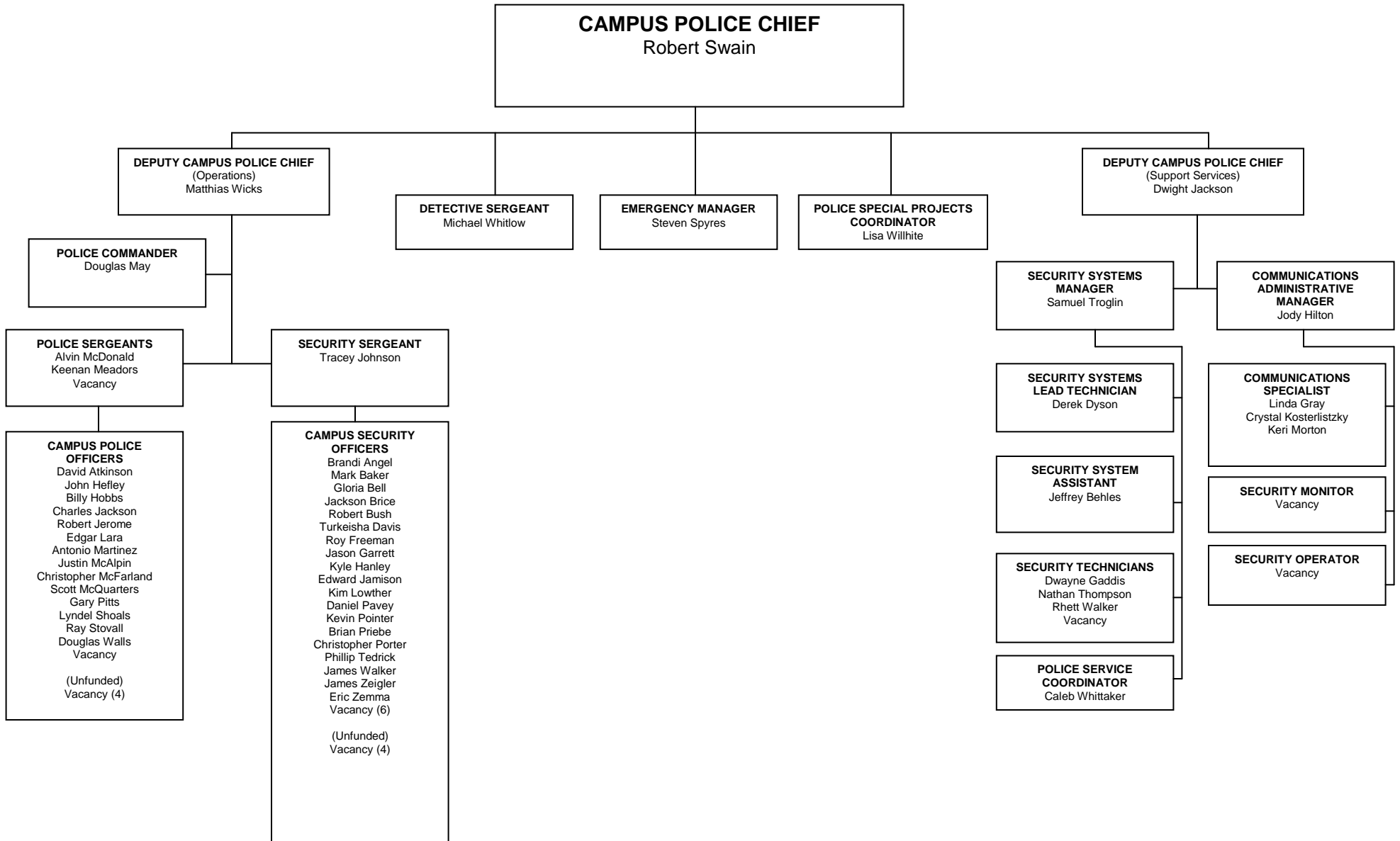
SERVICE DESK ANALYSTS II
Sharon Carson
Andrea Gourley
Chris Scott

SERVICE DESK ANALYSTS I
Natalie Burns
Louise Owen
Kendall Rimmer

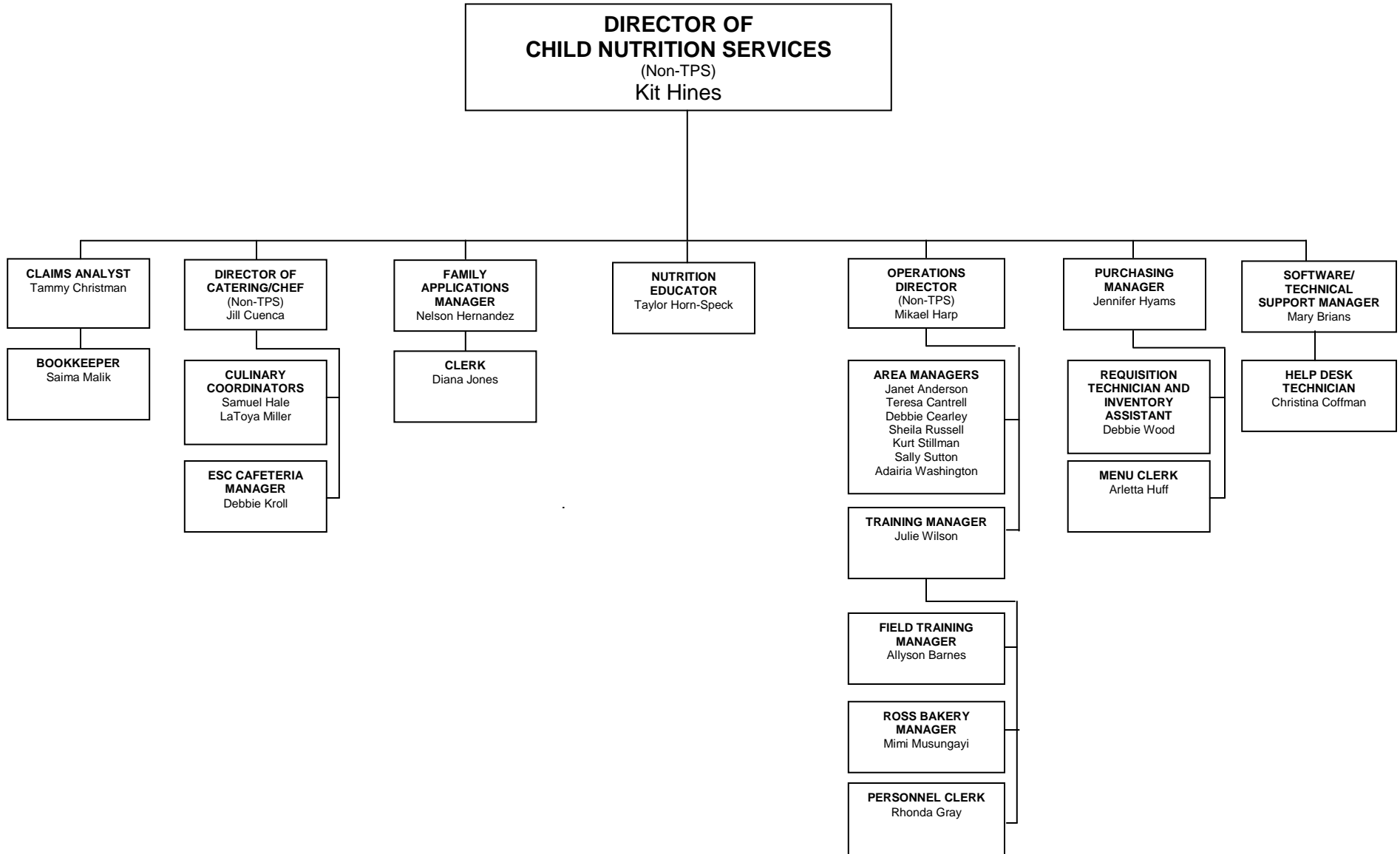
**SERVICE DESK ANALYST/
SECURITY ADMINISTRATION**
Lawanna Penny

**SERVICE DESK ANALYST/
TECHNICIAN**
Jeffery Thomas

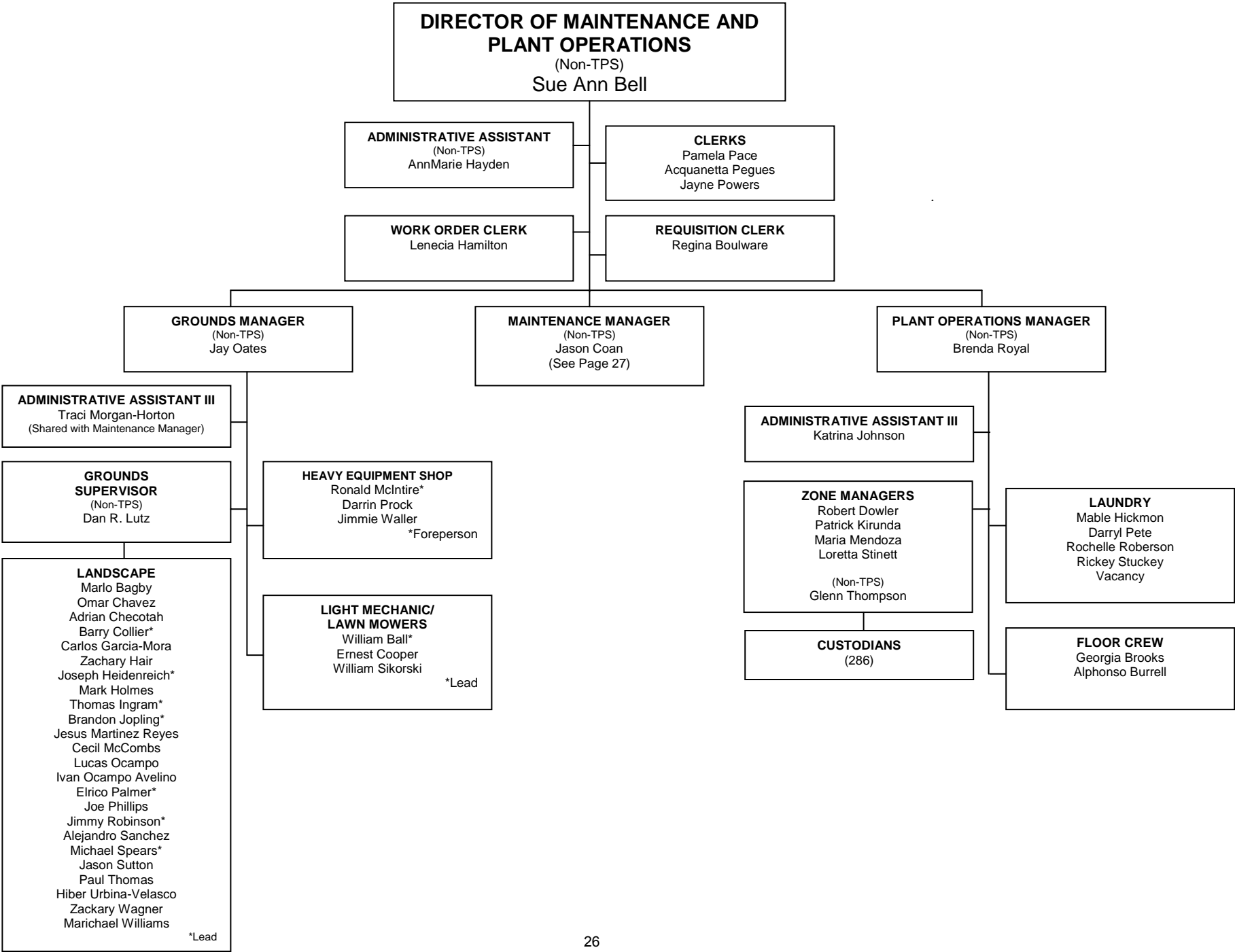
CAMPUS POLICE AND SECURITY SERVICES OFFICE



CHILD NUTRITION SERVICES OFFICE



MAINTENANCE AND PLANT OPERATIONS OFFICE



MAINTENANCE OFFICE

MAINTENANCE MANAGER
(Non-TPS)
Jason Coan

ADMINISTRATIVE ASSISTANT III
Traci Morgan-Horton
(Shared with Grounds Manager)

ASSISTANT MAINTENANCE MANAGER
John Olson

CAFETERIA MAINTENANCE SHOP
Billy Cantrell
Damon Dodd
Chris Morton
Jerry Thompson
Thomas Woodard†
Vacancy (3)
Vacancy*
†Foreperson *Lead

PLUMBING SHOP
Billy Brown
Michael Cook
Lonnie Fraley†
Danny Lutz*
Jeffrey Reddout
Randall Smith
Cy Willis
Vacancy (2)
†Foreperson *Lead

ELECTRIC SHOP
Michael Angelo
Samuel Bradley
Michael Culbertson
Jess Dewett
Steve Gilford
David Greeno†
Jamil Haynes
Jefferson Hunt*
Ronald Kirkendoll
Gregory Mill
Vacancy (3)
†Foreperson *Lead

HVAC SUPERVISOR
Vacancy

HVAC SHOP
Donnie Adkism
George Barnes
Cornell Brewer*
Kerry Burks
Timothy Cantrell
Tracy Conwell
Matt Goodman
Charles Hacker
Ross Kerschner
Ricky Lozano
Sammy Mack
Steven Seitz*
Richard Smith
Darryl Tincher
Carl Underwood
Darrell West
Daniel Wood
*Lead

APPLIANCE TECHNICIAN
Phil Tatum

PREVENTATIVE MAINTENANCE CRAFTSPERSONS
Gerald Cook
Harold Fulk
Clayton Hacker
Danny Phillips*
John Turner
Robert Wilson
*Lead

SHEET METAL SHOP
Russell Wilson

GENERAL MAINTENANCE SHOPS

CARPENTRY SHOP
Dwight Hamilton
David Lee
Robert Parker†
Charles Radebaugh
Marion Smith
Matthew Smith
David Wright
James Yeldell*
†Foreperson *Lead

BRICKMASON
John Taylor

LOCKSMITHS
Raul Chairez*
Brian Davis
Willie McAfee
*Lead

ROOFER
Marty Record

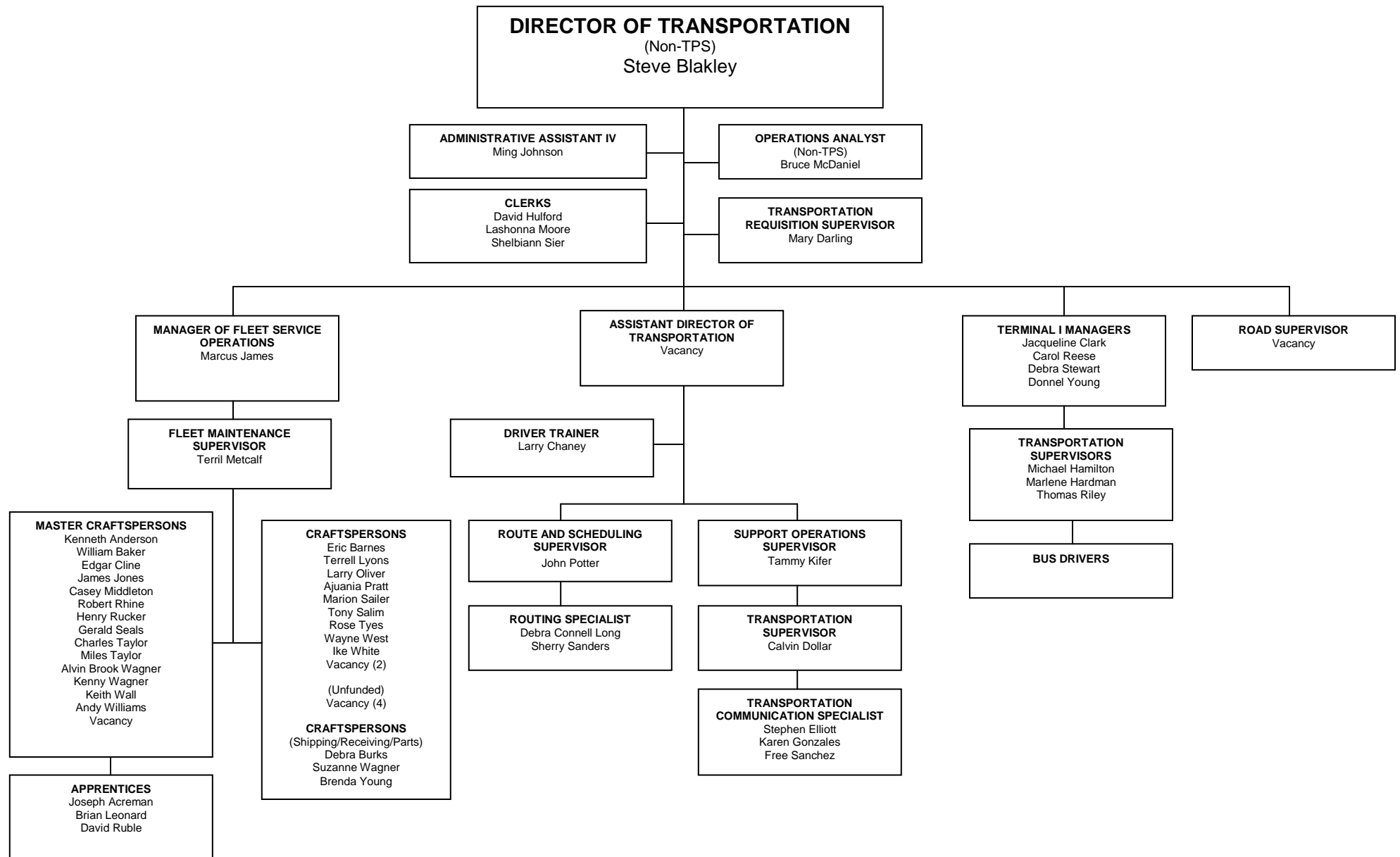
GLAZIER CRAFTSPERSON
Rodney Edwards
Jon Pulliam

PAINT/ PLASTER SHOP
Winston Barnes
Don Bewley
Tony Forshee*
Norman Gregory
Edward Hout
Martiniano Penalozza
Terry Perryman
Johnny Radebaugh†
Scott Holly
Robert Thompson*
Terry Yingst
†Foreperson *Lead

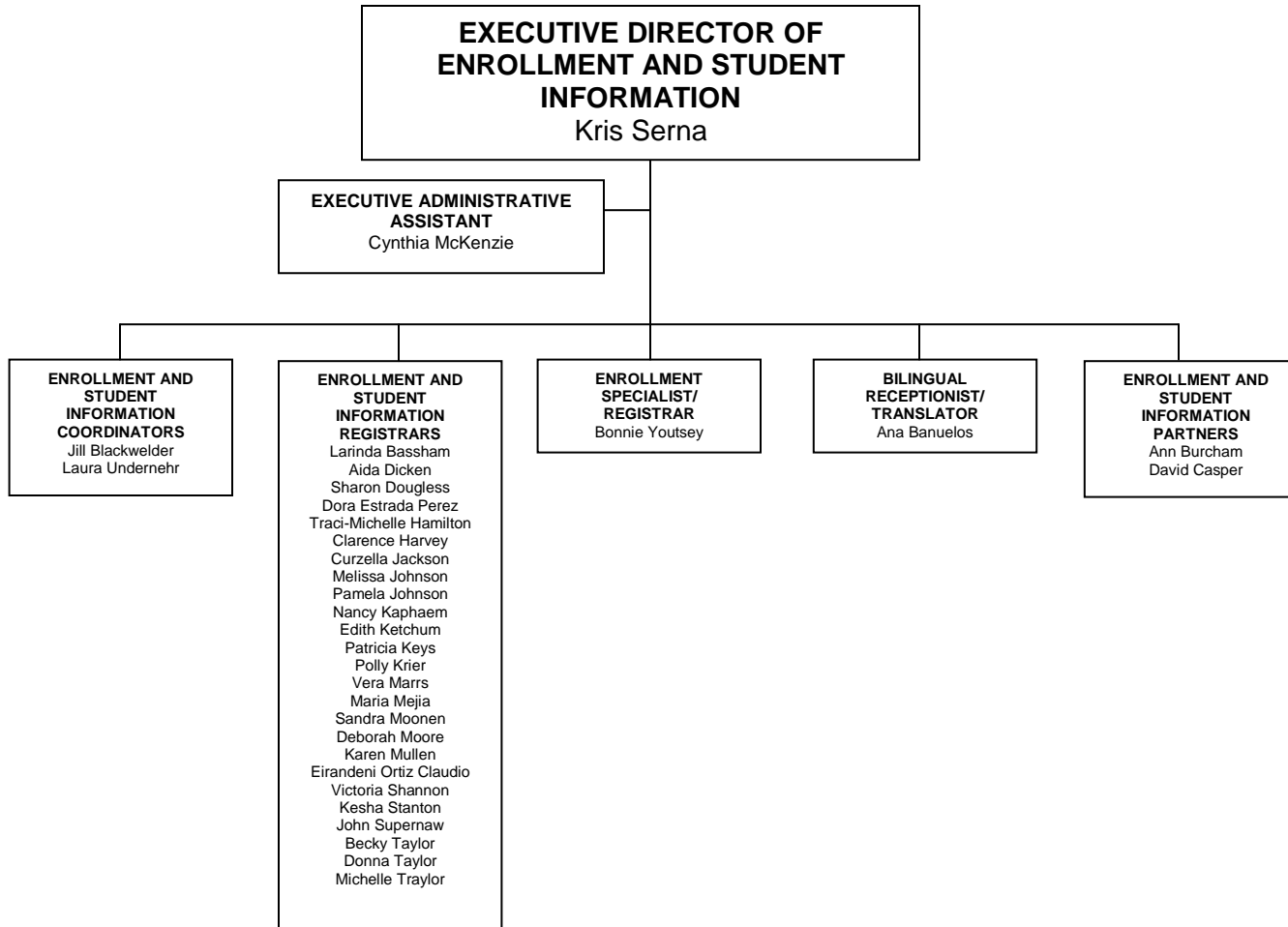
LABOR SHOP
Glenn Jones
James Locke
Roderick Parks
Sean Pixley
Curtis Price*
*Lead

ASBESTOS SHOP
Raul Elizalde*
Javier Estrada-Ramirez
*Lead

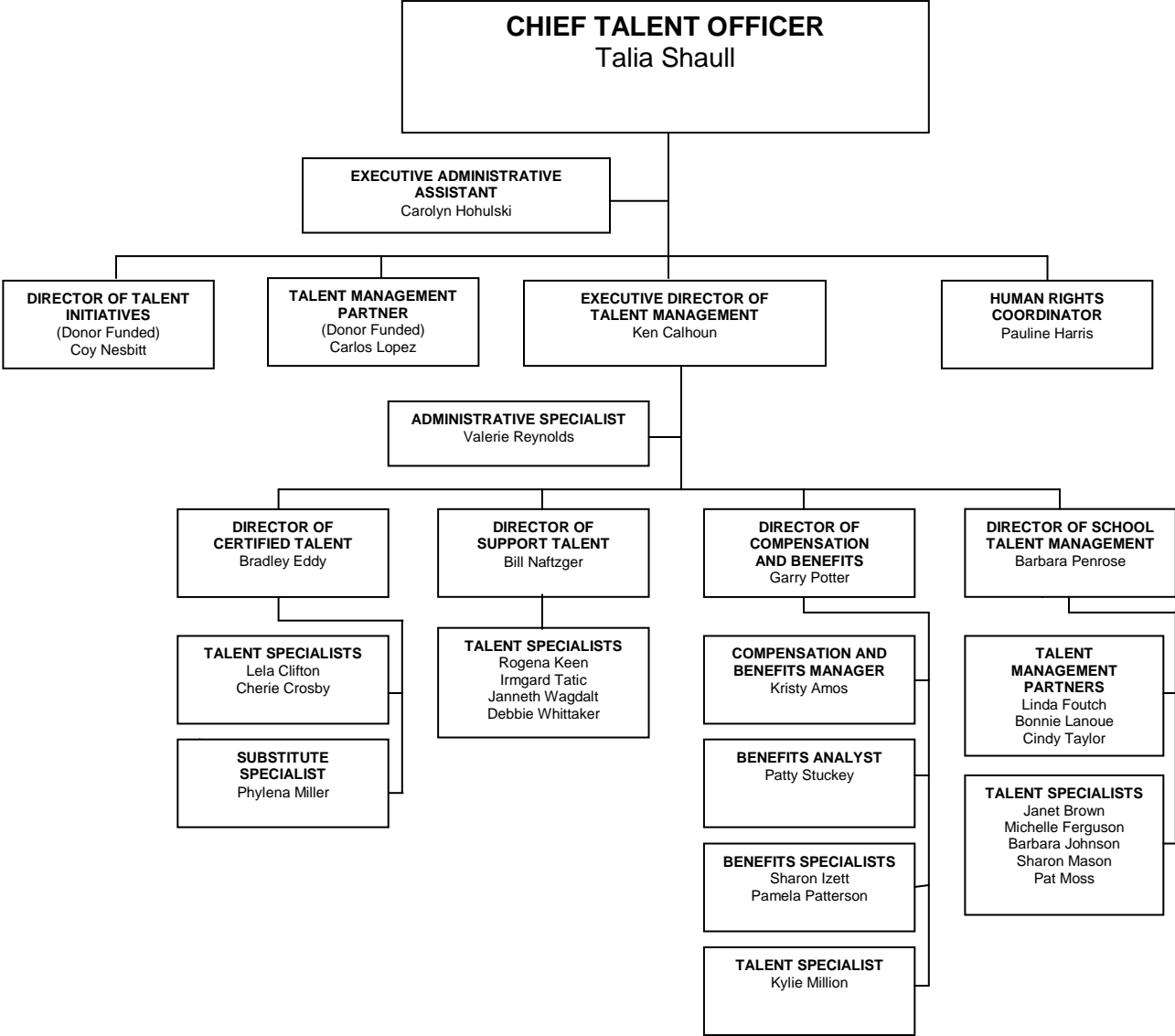
TRANSPORTATION OFFICE



ENROLLMENT AND STUDENT INFORMATION



TALENT MANAGEMENT



GENERAL COUNSEL

