



2023 SUMMER HVAC IMPROVEMENTS AT HALE HIGH SCHOOL

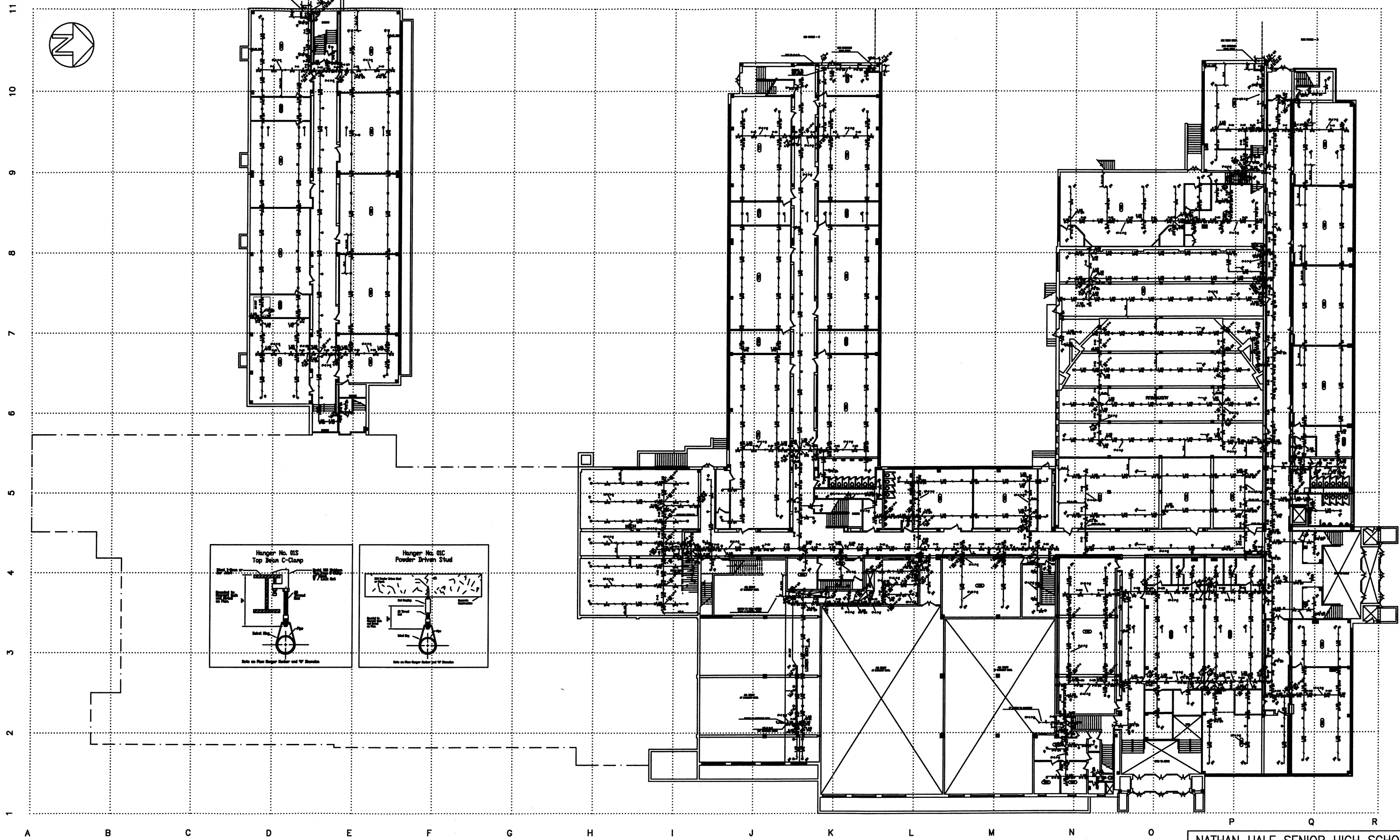
10/24/2022

Addendum #2

This addendum is hereby a part of those documents and contracts, the same as if bound therein and it shall supersede anything contained in the original bid manual with which it might conflict.

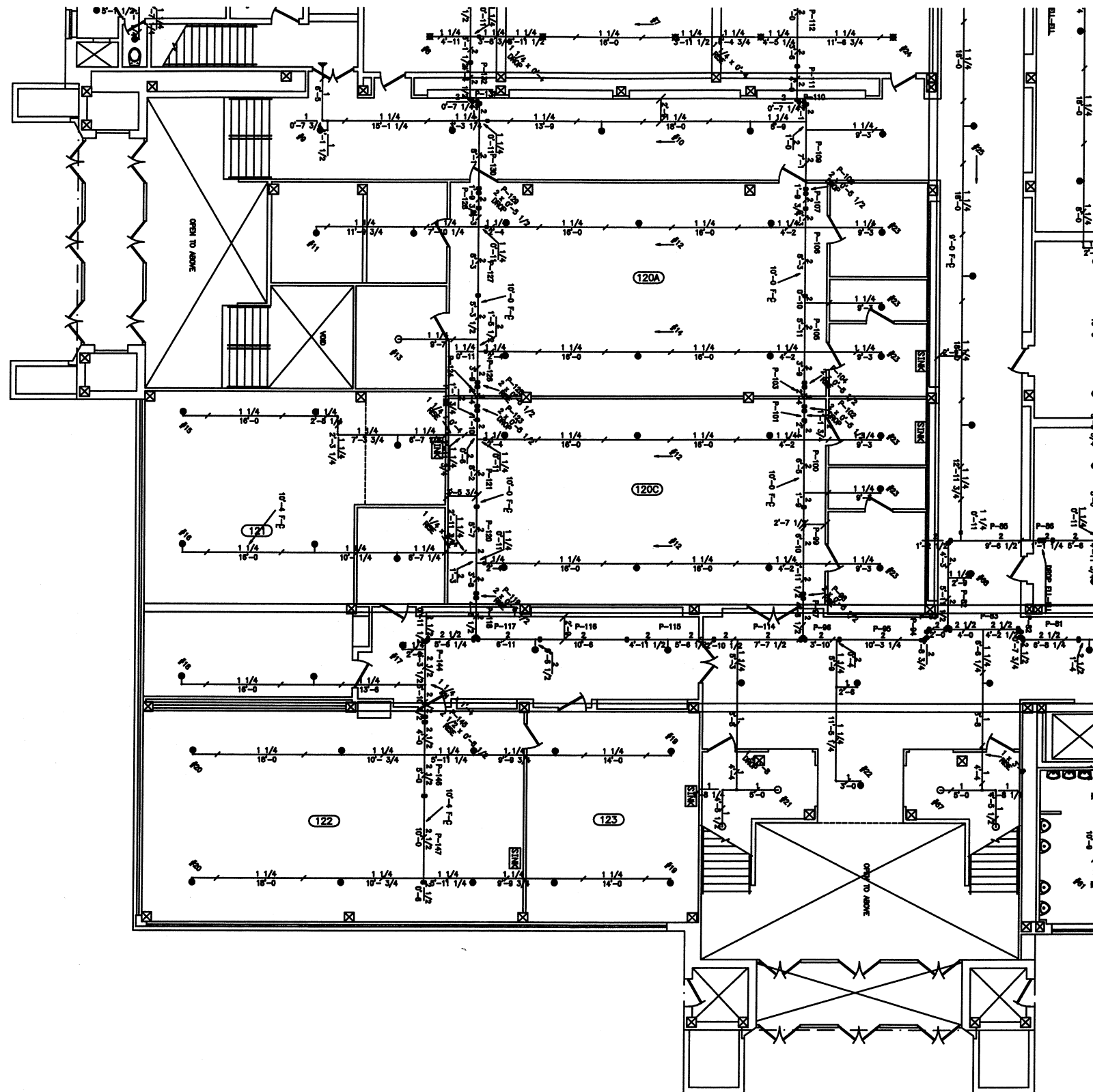
1. Provide Ramboard to protect the floor in all classrooms and in main gym and gym 237.
2. Provide Masonite floor protection in all corridors.
3. All marker board to be magnetic.
4. All classrooms, offices and corridors to paint, paint one coat on all door frames, doors to remain as is.
5. Remove all classroom data, voice and Panduit from each classroom and Office. Provide 3 new drops in each classroom, one in each office except where designated additional drops. All Panduit in classrooms to be new. Provide Multimode 50 Micron 6 strand fiber from MDF to each IDF.
6. All exiting WAP's to be removed from ceiling and reinstalled. Cabling to remain. All valcom equipment to be removed and reinstalled as required.

The end

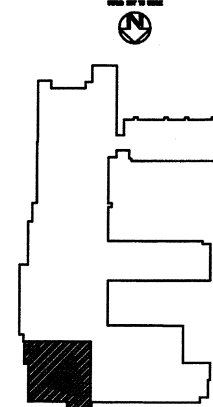


"AS BUILT- SEPT. 15, 2002"

NATHAN HALE SENIOR HIGH SCHOOL EAST 21ST STREET - TULSA OKLAHOMA			
GROUND FLOOR PLAN FIRE PROTECTION			
DRAWN BY: DGT, LLC	DWG NO.	F100	REV 1
CHECK BY: J. PALMER JR.	DATE: 03/05/02	SCALE: 20' = 1"	SHEET: 1 OF 6

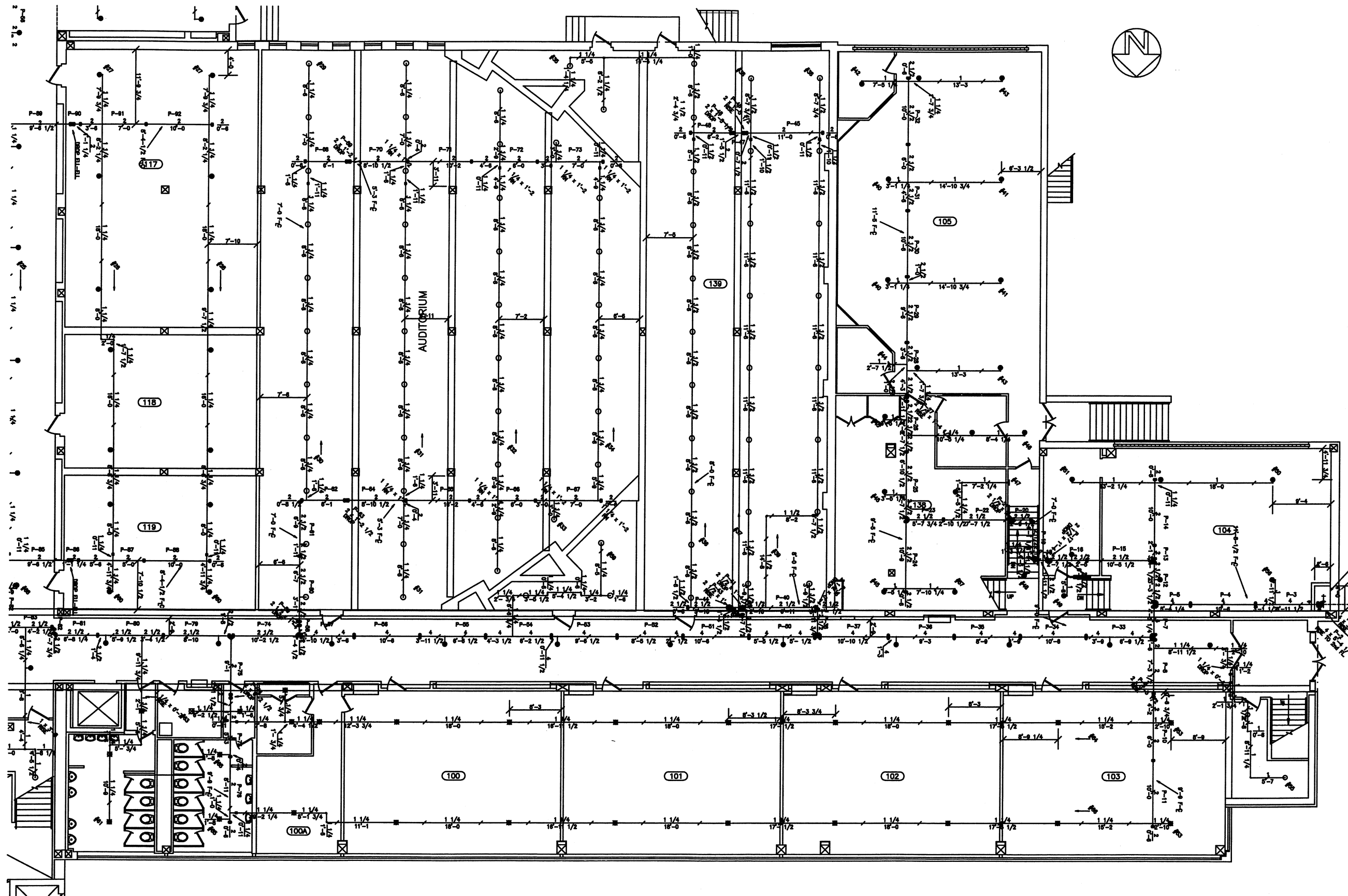


KEY PLAN

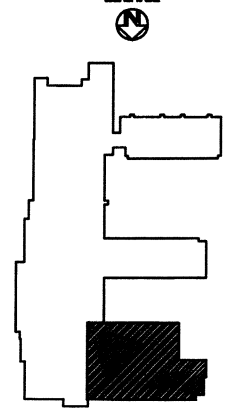


"AS BUILT- SEPT. 15, 2002"

NATHAN HALE SENIOR HIGH SCHOOL EAST 21ST STREET - TULSA OKLAHOMA			
GROUND FLOOR PLAN UNIT A FIRE PROTECTION			
DRAWN BY: DET, LLC	DWG NO.	F101	REV 1
CHECK BY: J. PALMER JR.	DATE: 03/09/02	SCALE: 1/8" = 1'	SHEET: 2 OF 8

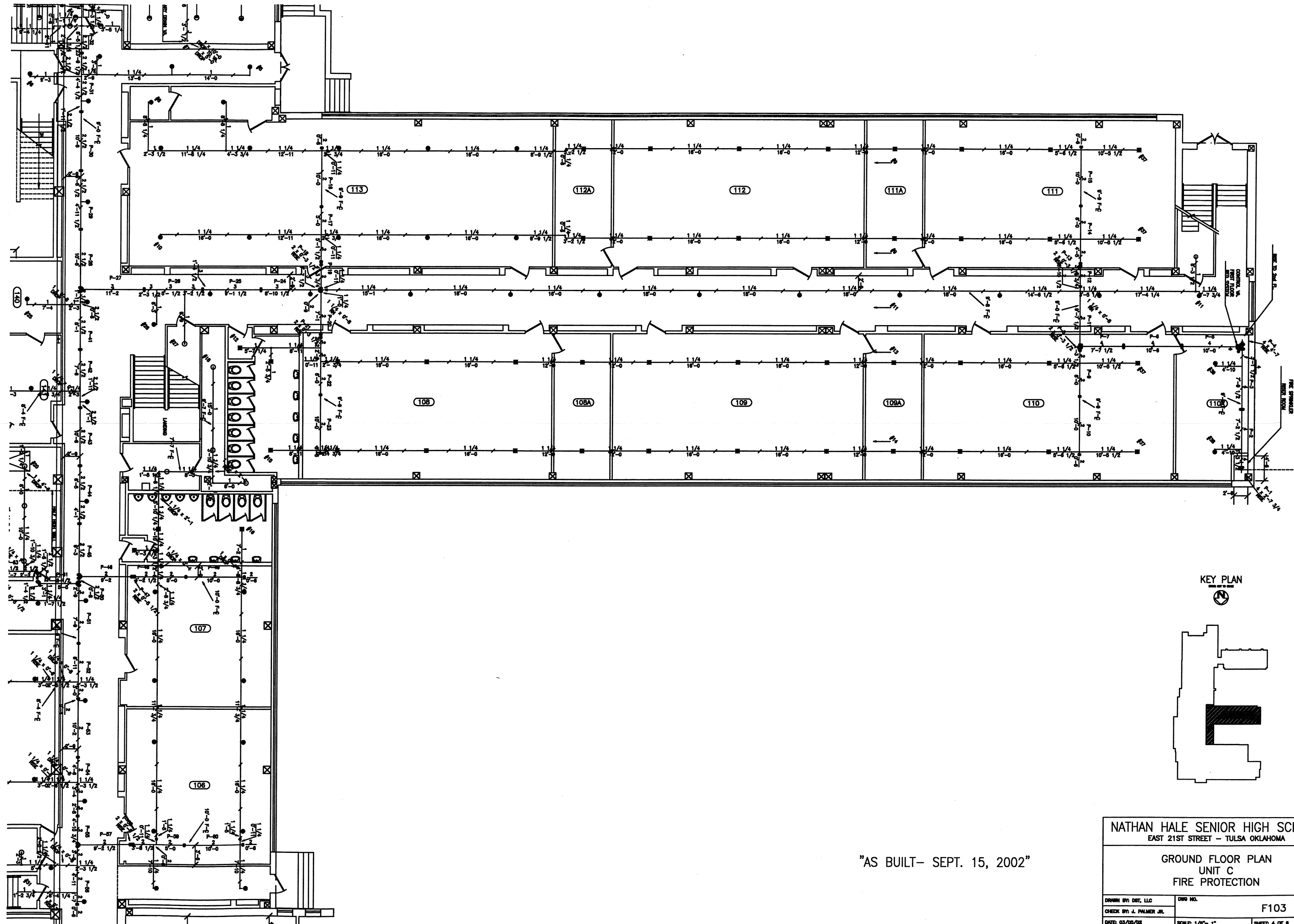


KEY PLAN

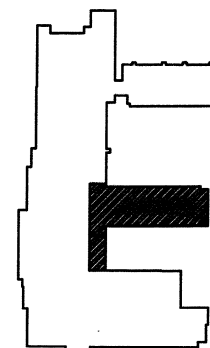


"AS BUILT- SEPT. 15, 2002"

NATHAN HALE SENIOR HIGH SCHOOL EAST 21ST STREET - TULSA OKLAHOMA			
GROUND FLOOR PLAN UNIT B FIRE PROTECTION			
DRAWN BY: DST, LLC	DWG NO.	F102	REV 1
CHECK BY: J. PALMER JR.			
DATE: 03/05/02	SCALE: 1/8" = 1'	SHEET: 3 OF 6	

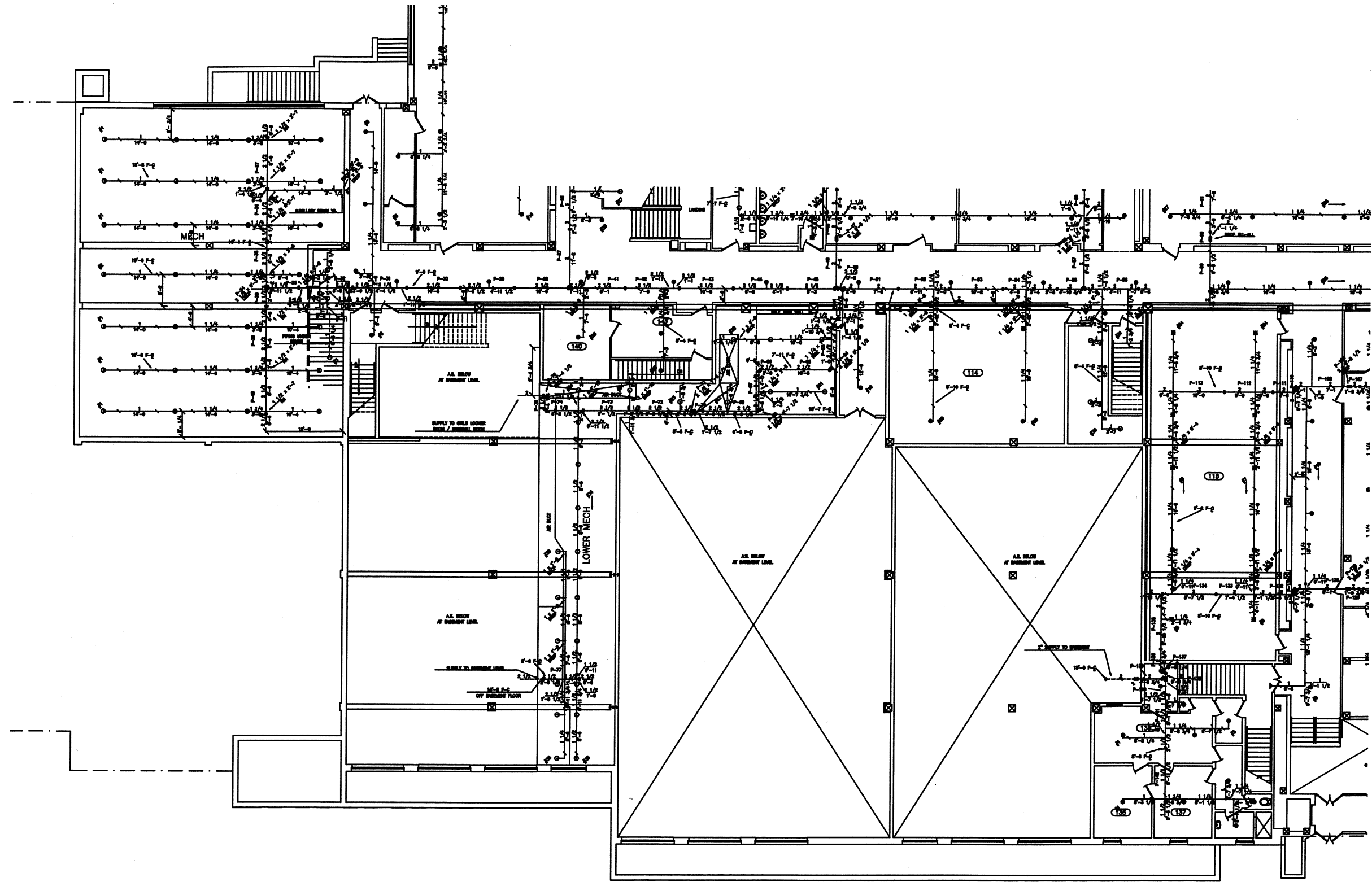


KEY PLAN

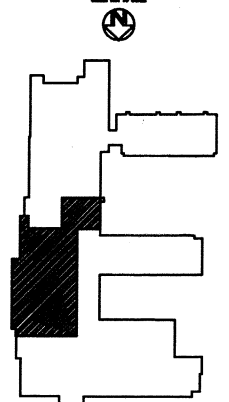


"AS BUILT- SEPT. 15, 2002"

NATHAN HALE SENIOR HIGH SCHOOL			
EAST 21ST STREET -- TULSA OKLAHOMA			
GROUND FLOOR PLAN			
UNIT C			
FIRE PROTECTION			
DRAWN BY: DST, LLC		DWG NO.	F103
CHECK BY: J. PALMER JR.			REV 1
DATE: 03/05/02		SCALE: 1/8" = 1"	SHEET: 4 OF 6

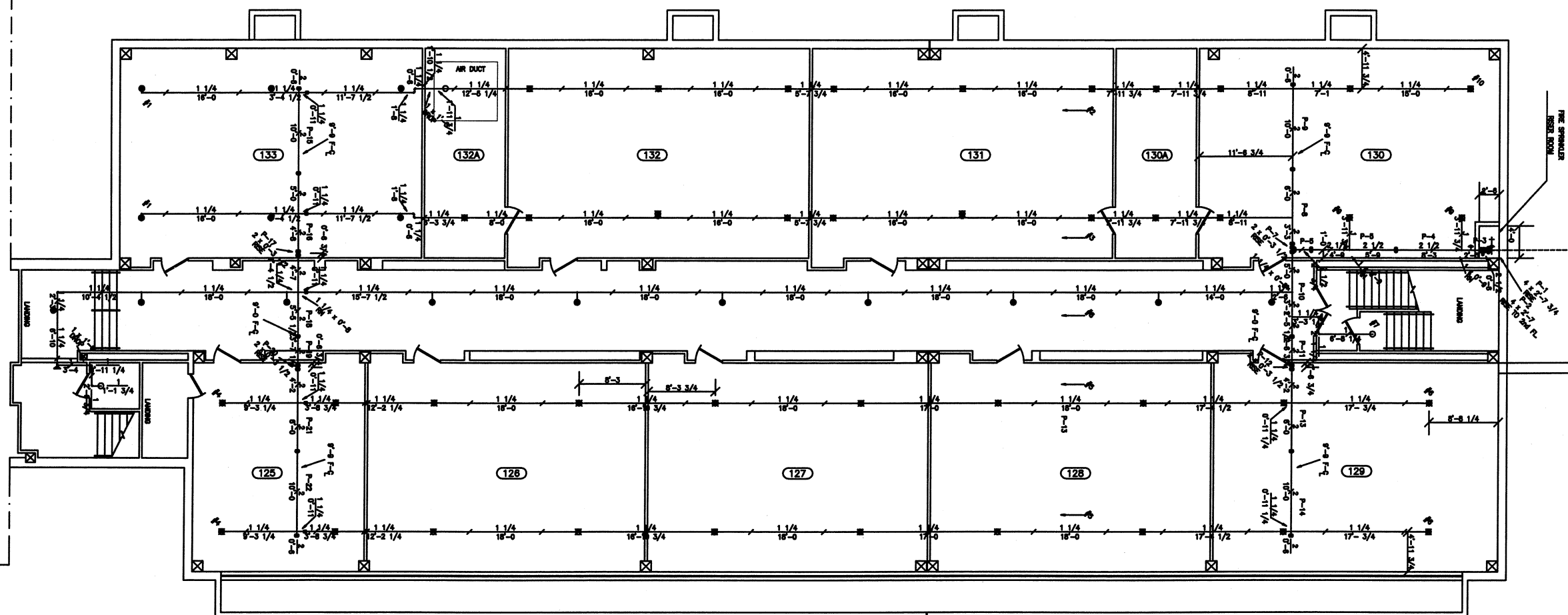


KEY PLAN



"AS BUILT- SEPT. 15, 2002"

NATHAN HALE SENIOR HIGH SCHOOL EAST 21ST STREET - TULSA OKLAHOMA			
GROUND FLOOR PLAN UNIT F FIRE PROTECTION			
DRAWN BY: DET, LLC	DWG NO.	F104	REV
CHECK BY: J. PALMER JR.			1
DATE: 03/05/02	SCALE: 3/32" = 1"	SHEET: 5 OF 6	

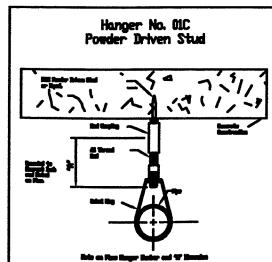
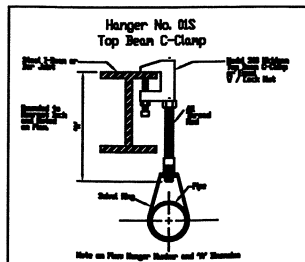
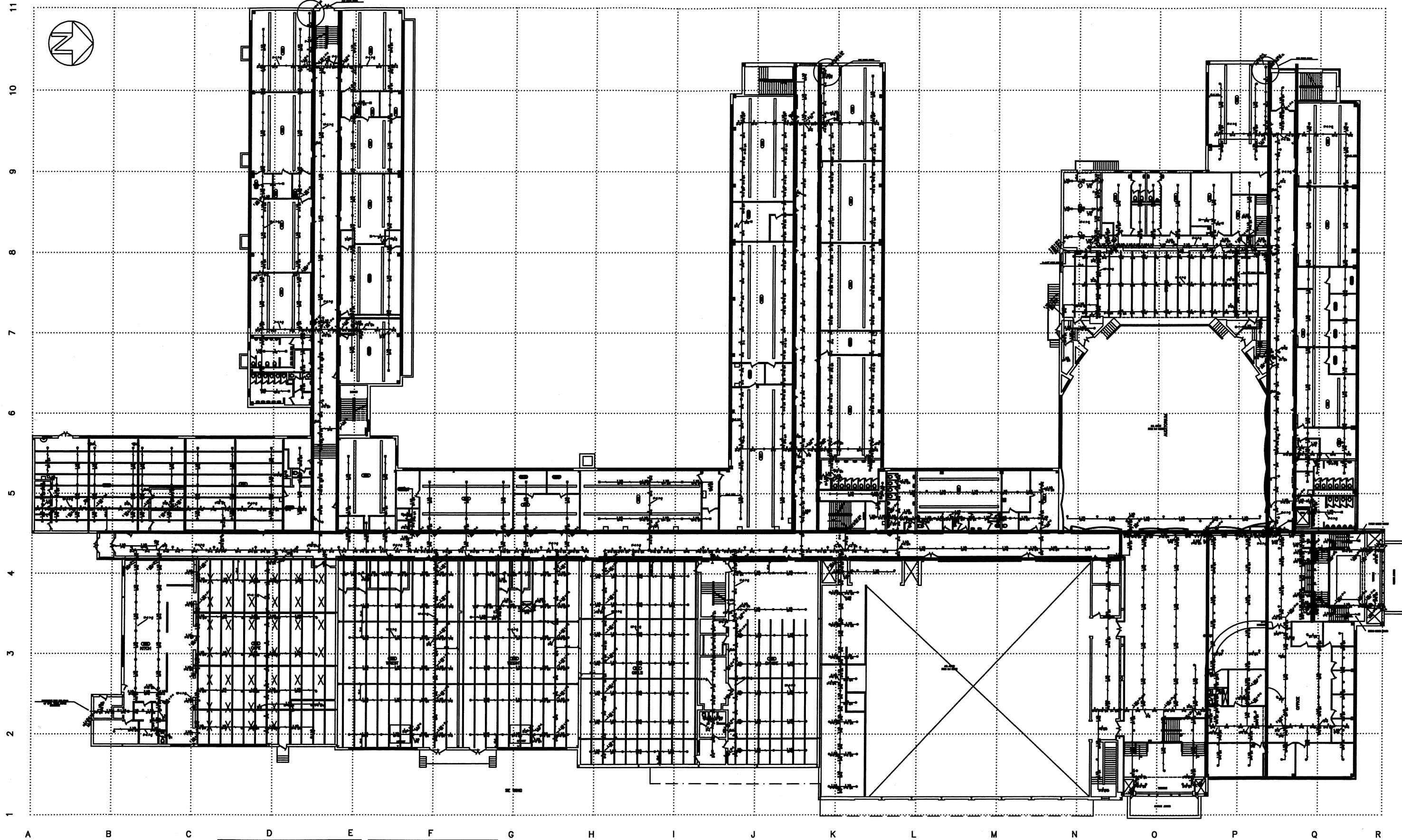


"AS BUILT- SEPT. 15, 2002"

NATHAN HALE SENIOR HIGH SCHOOL
EAST 21ST STREET - TULSA OKLAHOMA

GROUND FLOOR PLAN
UNIT G
FIRE PROTECTION

DRAWN BY: DST, LLC	DWG NO. F105	REV 1
CHECK BY: J. PALMER JR.		
DATE: 03/05/02	SCALE: 1/8" = 1"	SHEET: 6 OF 6

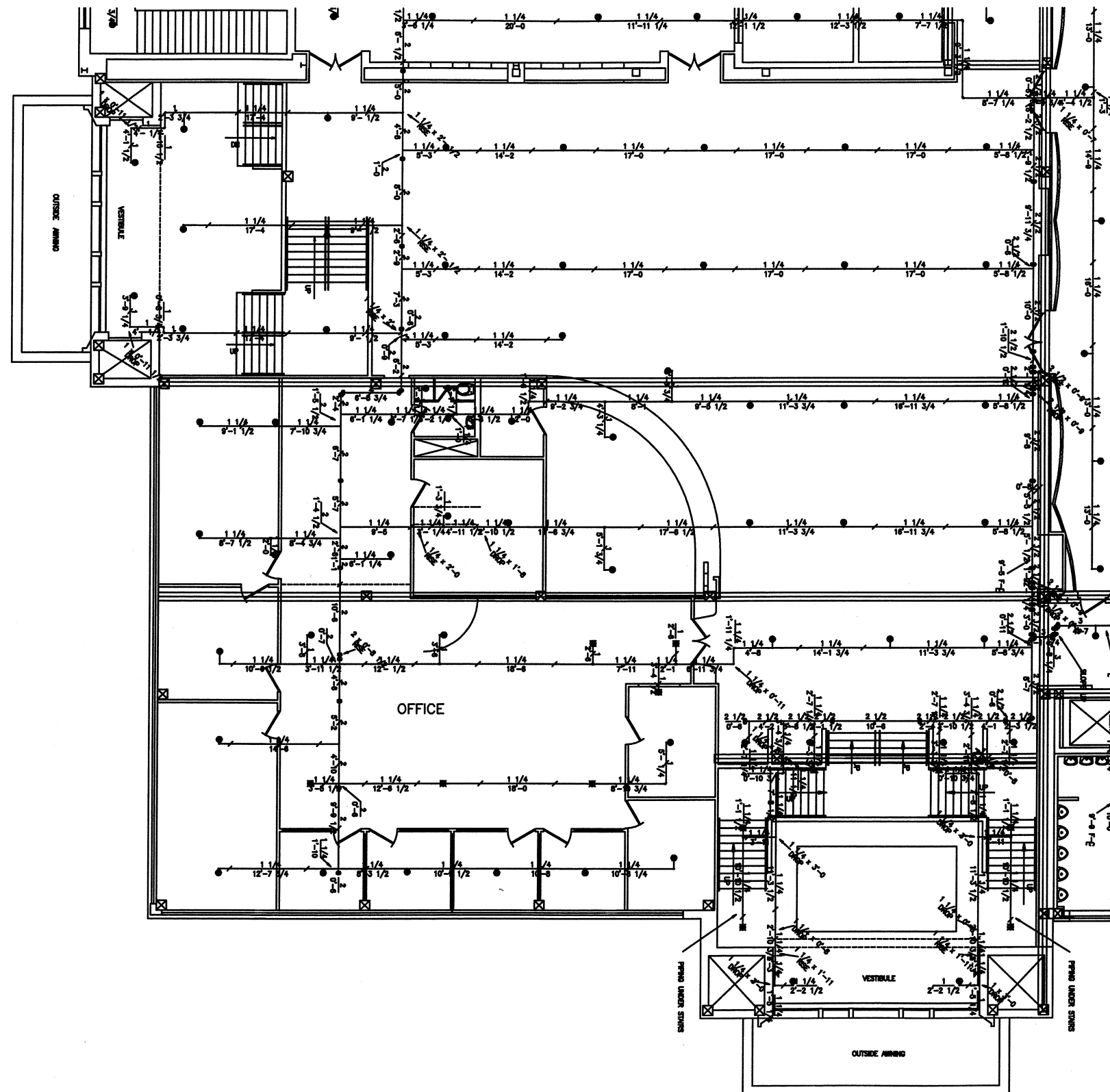


"AS BUILT- SEPT. 15, 2002"

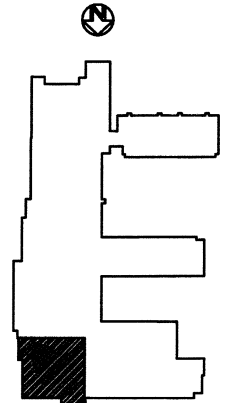
NATHAN HALE SENIOR HIGH SCHOOL
EAST 21ST STREET - TULSA OKLAHOMA

SECOND FLOOR PLAN
FIRE PROTECTION

DRAWN BY: DST, LLC	DWG NO.	REV
CHECK BY: J. PALMER, JR.	F200	1
DATE: 03/06/02	SCALE: 3/8" = 1"	SHEET: 1 OF 8

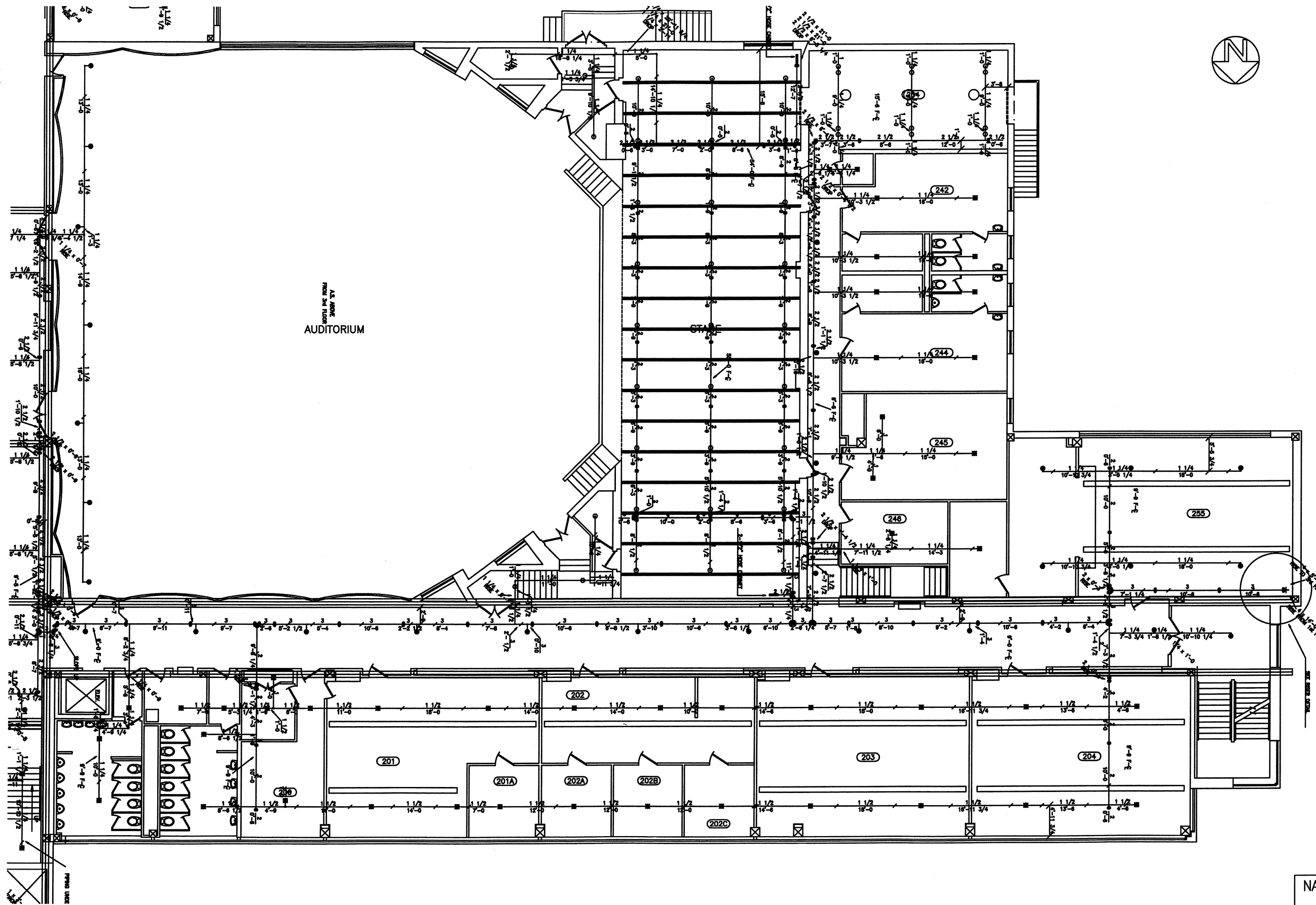


KEY PLAN



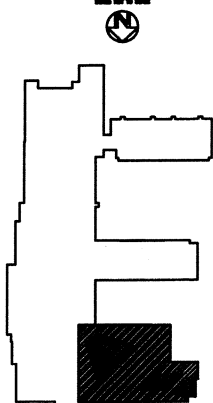
"AS BUILT- SEPT. 15, 2002"

NATHAN HALE SENIOR HIGH SCHOOL EAST 21ST STREET - TULSA OKLAHOMA			
SECOND FLOOR PLAN UNIT A FIRE PROTECTION			
DRAWN BY: DET, LLC	DWG NO.	F201	REV 1
CHECK BY: J. PALMER JR.	DATE: 03/05/02	SCALE: 1/8" = 1'	SHEET: 2 OF 8



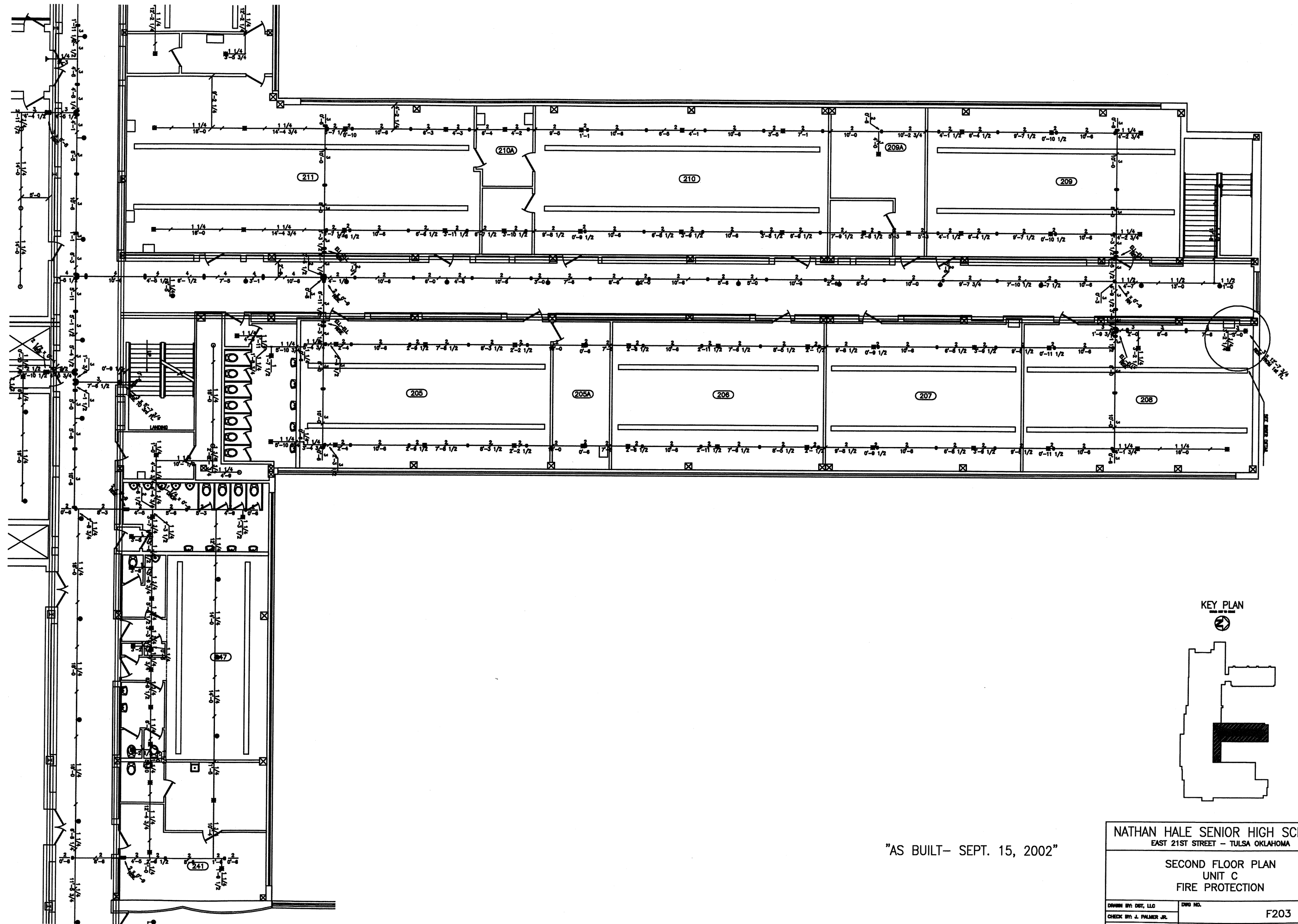
AS BUILT
FROM 2ND FLOOR
AUDITORIUM

KEY PLAN

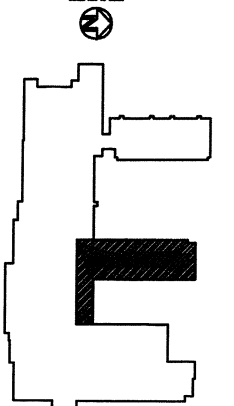


"AS BUILT- SEPT. 15, 2002"

NATHAN HALE SENIOR HIGH SCHOOL EAST 21ST STREET - TULSA OKLAHOMA			
SECOND FLOOR PLAN UNIT B FIRE PROTECTION			
DRAWN BY: DDT, LLC	DWG NO.	F202	REV 1
CHECK BY: J. PALMER JR.	DATE: 03/05/02	SCALE: 1/8" = 1'	SHEET: 3 OF 8

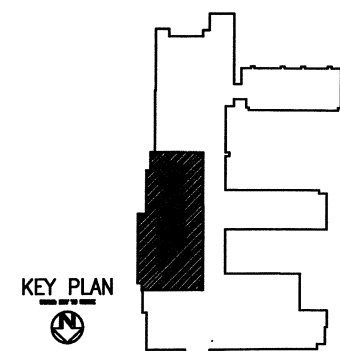
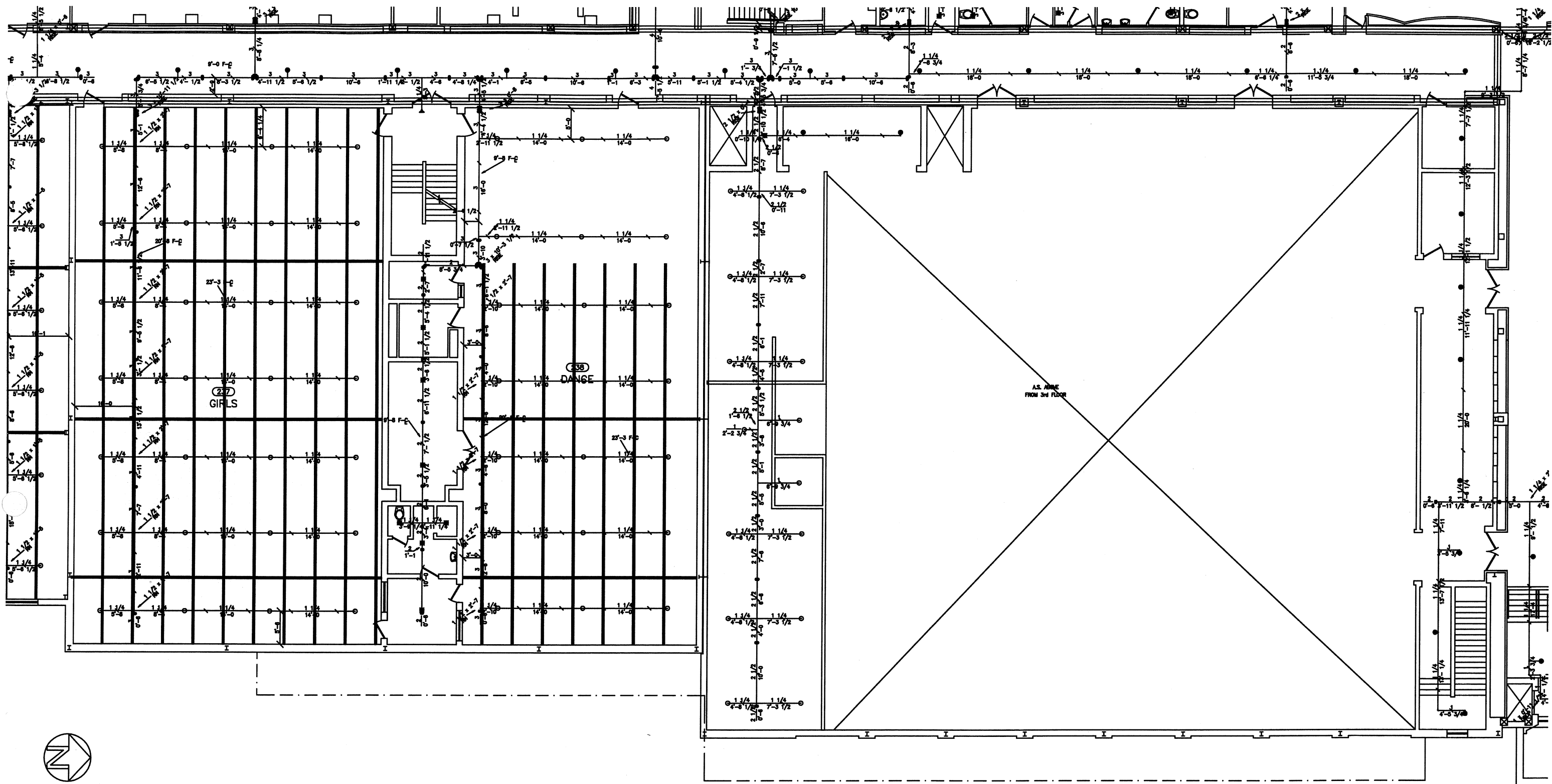


KEY PLAN



"AS BUILT- SEPT. 15, 2002"

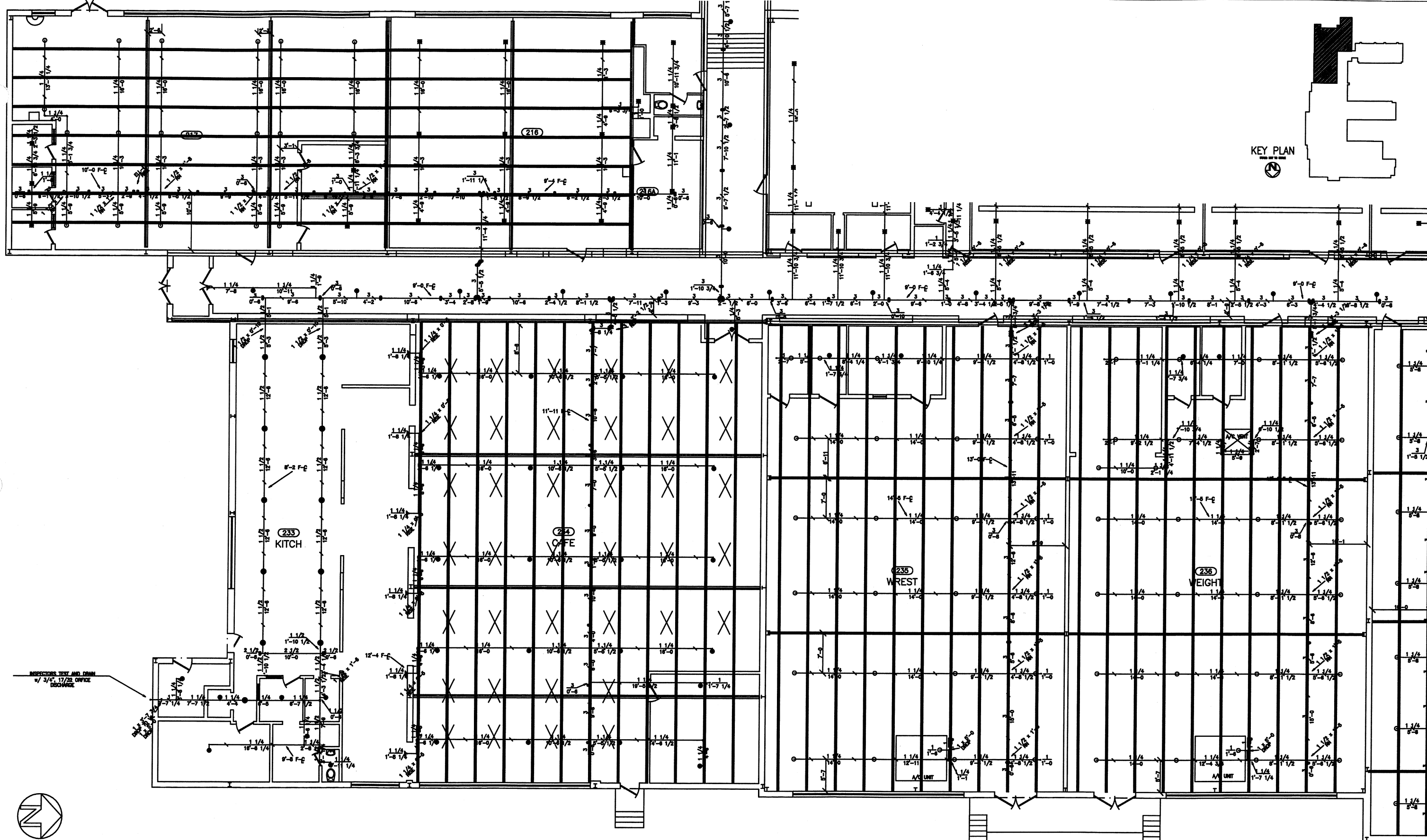
NATHAN HALE SENIOR HIGH SCHOOL EAST 21ST STREET - TULSA OKLAHOMA			
SECOND FLOOR PLAN UNIT C FIRE PROTECTION			
DRAWN BY: DST, LLC	DWG NO.	F203	REV 1
CHECK BY: J. PALMER JR.	DATE: 03/05/02	SCALE: 1/8" = 1'	SHEET: 4 OF 8



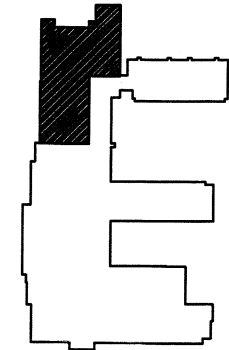
KEY PLAN

"AS BUILT- SEPT. 15, 2002"

NATHAN HALE SENIOR HIGH SCHOOL EAST 21ST STREET - TULSA OKLAHOMA			
SECOND FLOOR PLAN UNIT D FIRE PROTECTION			
DRAWN BY: DET, LLC	DWG NO.	F204	REV 1
CHECK BY: J. PALMER, JR.	DATE: 03/05/02	SCALE: 1/8" = 1'	SHEET: 5 OF 8

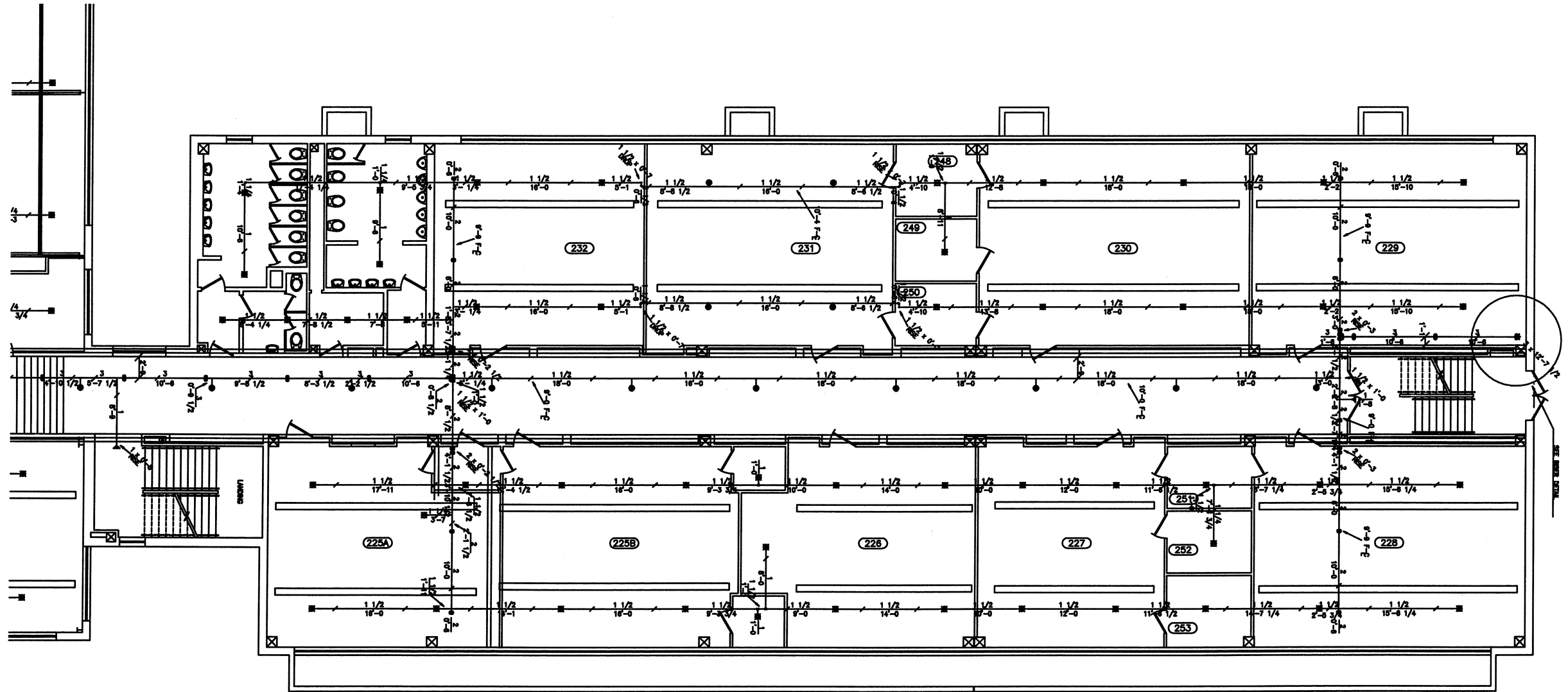


KEY PLAN



"AS BUILT- SEPT. 15, 2002"

NATHAN HALE SENIOR HIGH SCHOOL EAST 21ST STREET - TULSA OKLAHOMA			
SECOND FLOOR PLAN UNIT E FIRE PROTECTION			
DRAWN BY: DET, LLC	DWG NO.	F205	REV 1
CHECK BY: J. PALMER JR.	DATE: 03/06/02	SCALE: 1/8" = 1"	SHEET: 6 OF 8



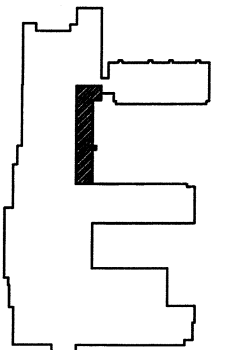
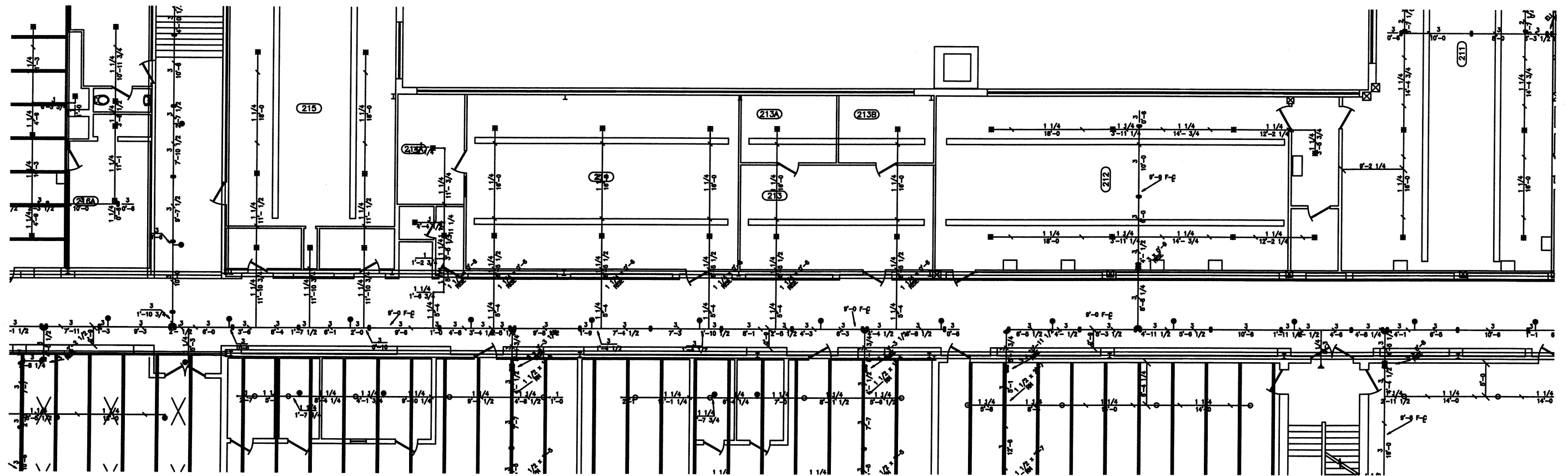
SECTION A - SEE SHEET 7

KEY PLAN



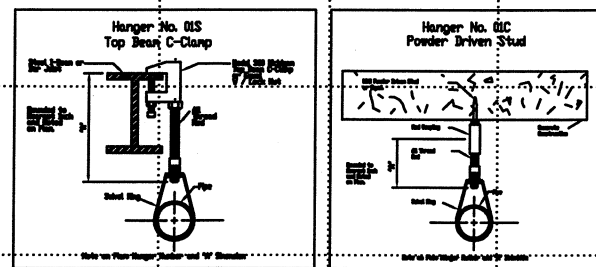
"AS BUILT- SEPT. 15, 2002"

NATHAN HALE SENIOR HIGH SCHOOL EAST 21ST STREET - TULSA OKLAHOMA			
SECOND FLOOR PLAN UNIT G FIRE PROTECTION			
DRAWN BY: DST, LLC	DWG NO.	F206	REV 1
CHECK BY: J. PALMER JR.	DATE: 03/05/02	SCALE: 1/8" = 1'	SHEET 7 OF 8



<p align="center">NATHAN HALE SENIOR HIGH SCHOOL EAST 21ST STREET - TULSA OKLAHOMA</p>			
<p align="center">SECOND FLOOR PLAN UNIT H FIRE PROTECTION</p>			
DRAWING BY: DST, LLC		DWG NO.	
CHECK: BRY. PALMER JR.		F207	
DATE: 03/05/02		REV 1	
SCALE: 1/8"= 1"		SHEET 8 OF 8	

11
10
9
8
7
6
5
4
3
2
1

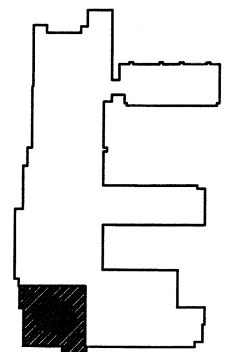
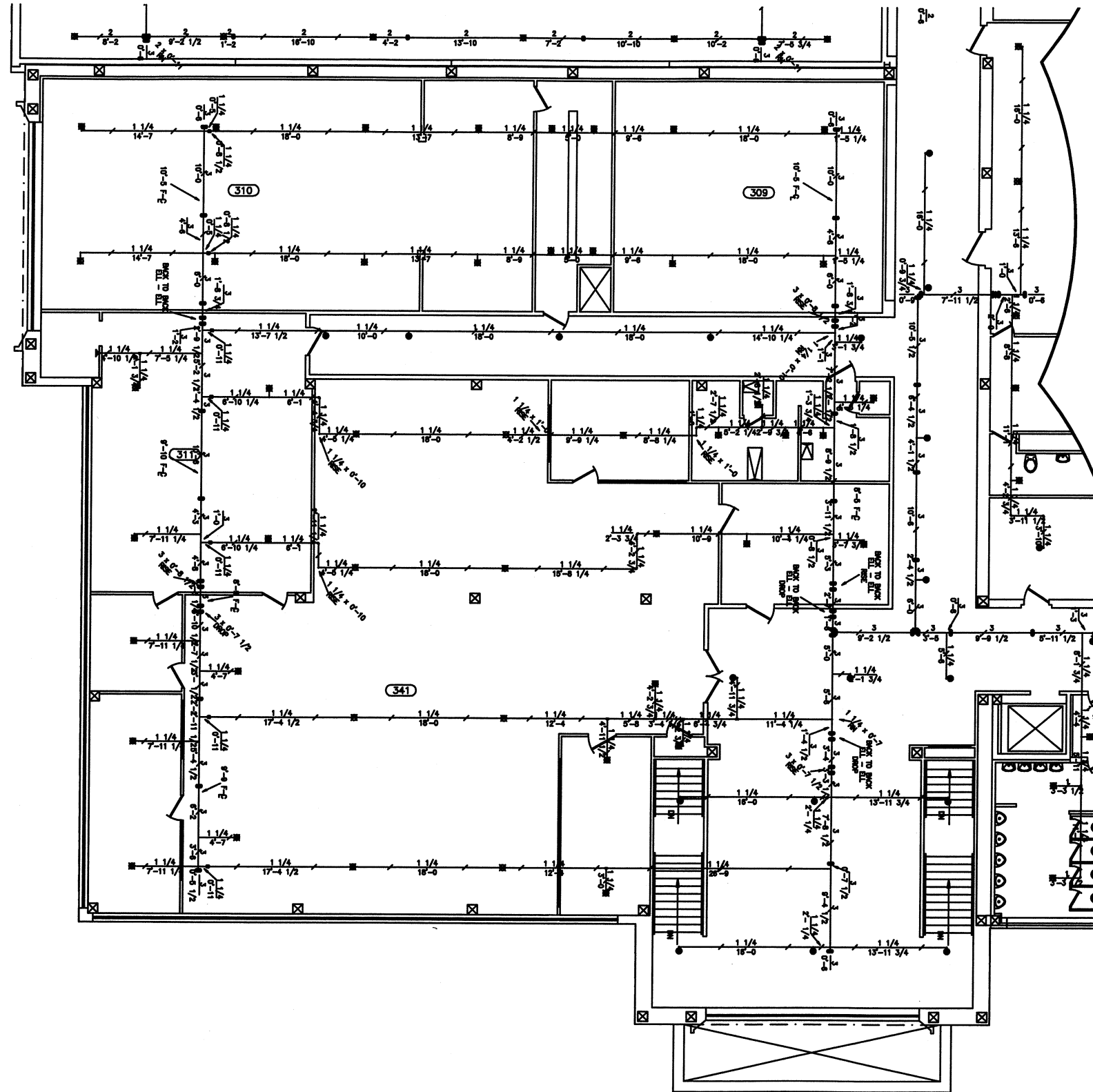


A B C D E F G H I J K L M N O P Q R

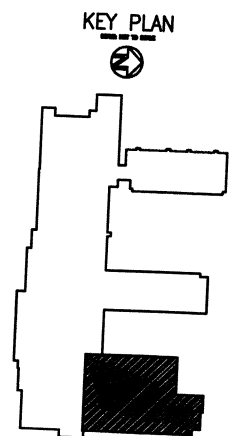
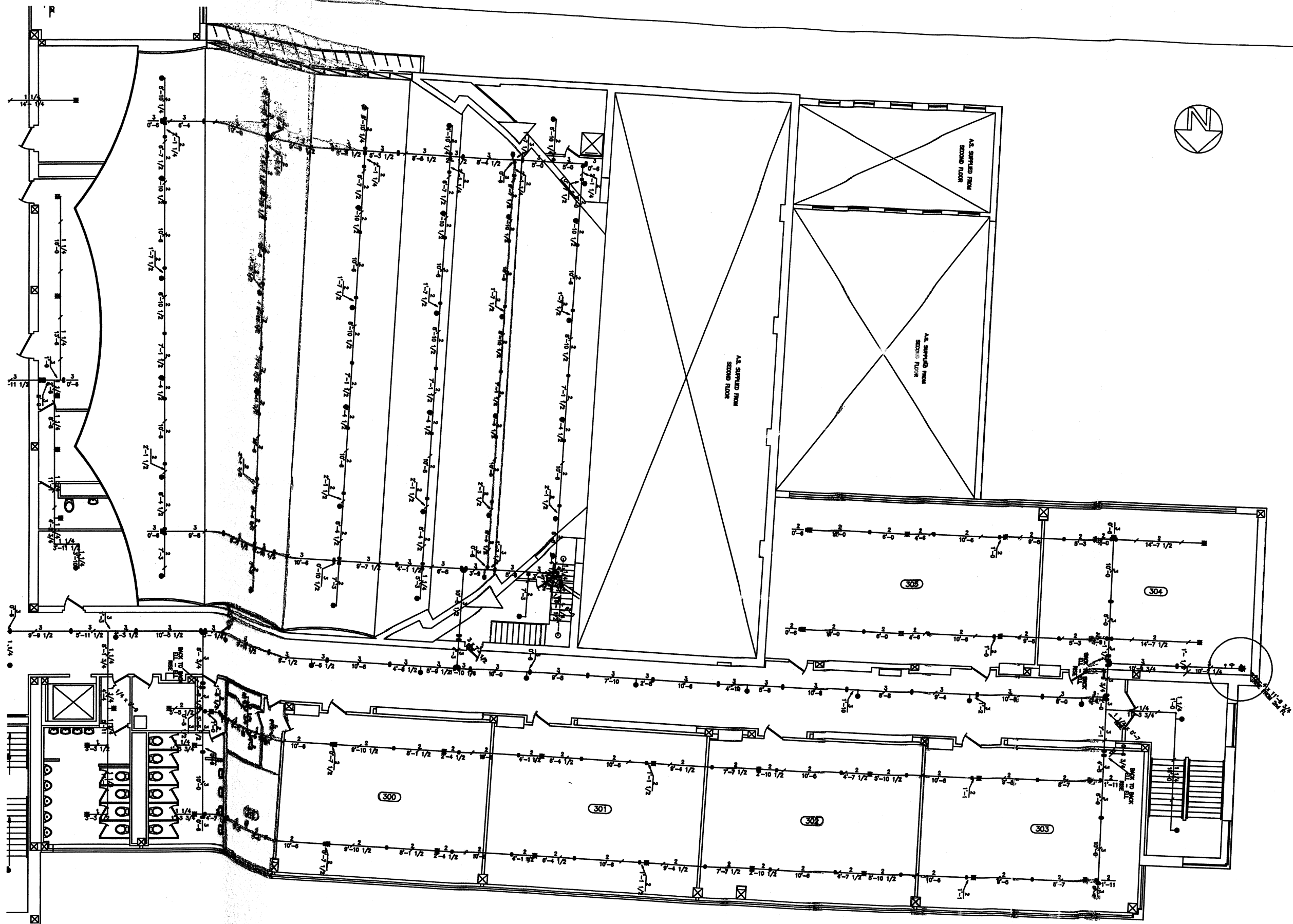
"AS BUILT- SEPT. 15, 2002"

NATHAN HALE SENIOR HIGH SCHOOL EAST 21ST STREET - TULSA OKLAHOMA			
THIRD FLOOR PLAN FIRE PROTECTION			
DRAWN BY: DET, LLC	DWG NO.	F300	REV 1
CHECK BY: J. PALMER JR.			
DATE: 03/05/02	SCALE: 3/8" = 1"		

SHEET: 1 OF 6



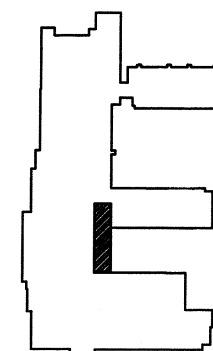
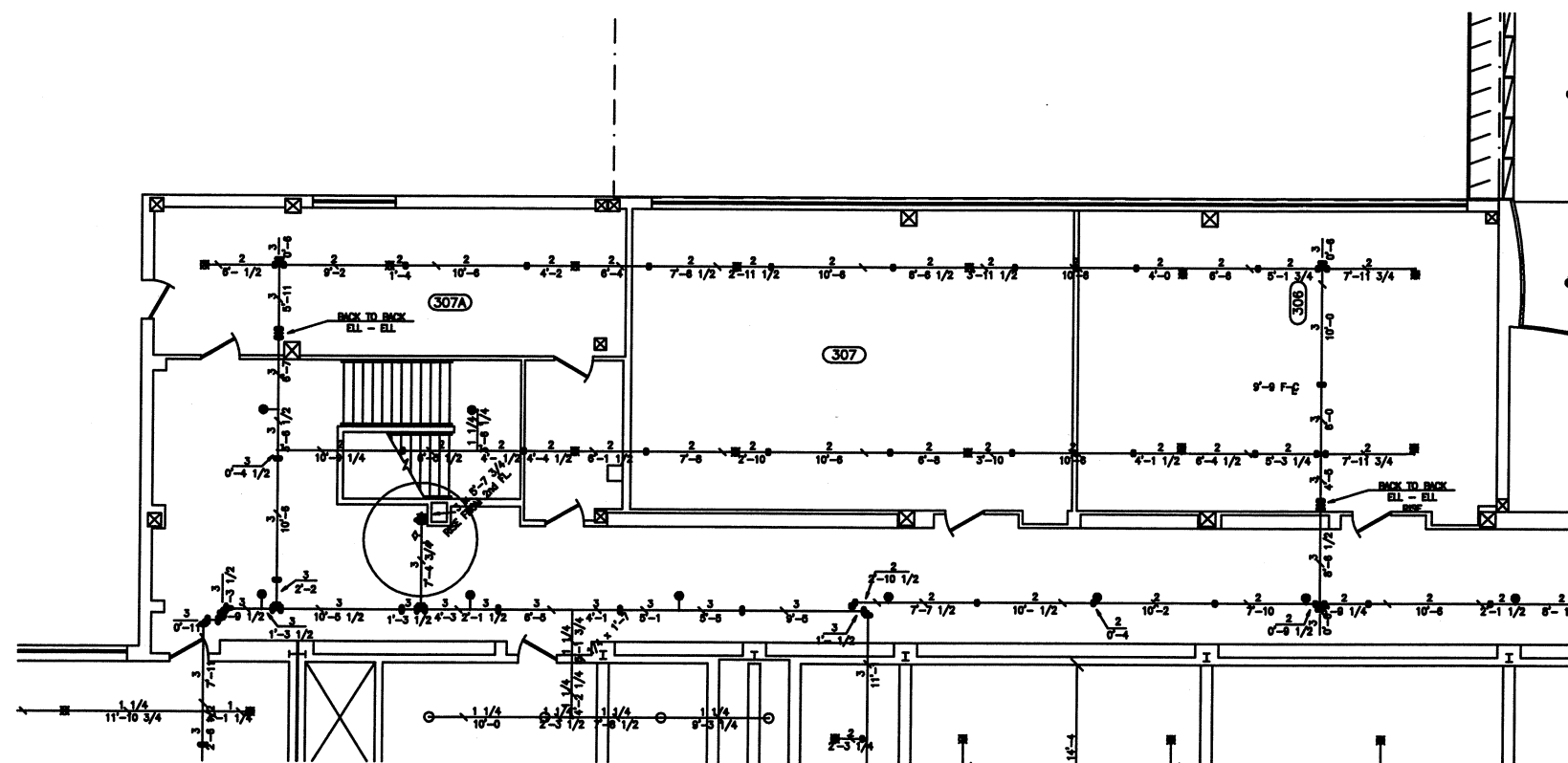
DRAWN BY: DST, LLC	DWG NO.	F301	REV 1
CHECK BY: J. PALMER JR.			
DATE: 03/05/02	SCALE: 1/8" = 1"	SHEET: 2 OF 8	



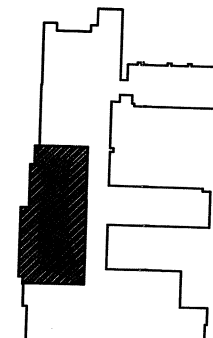
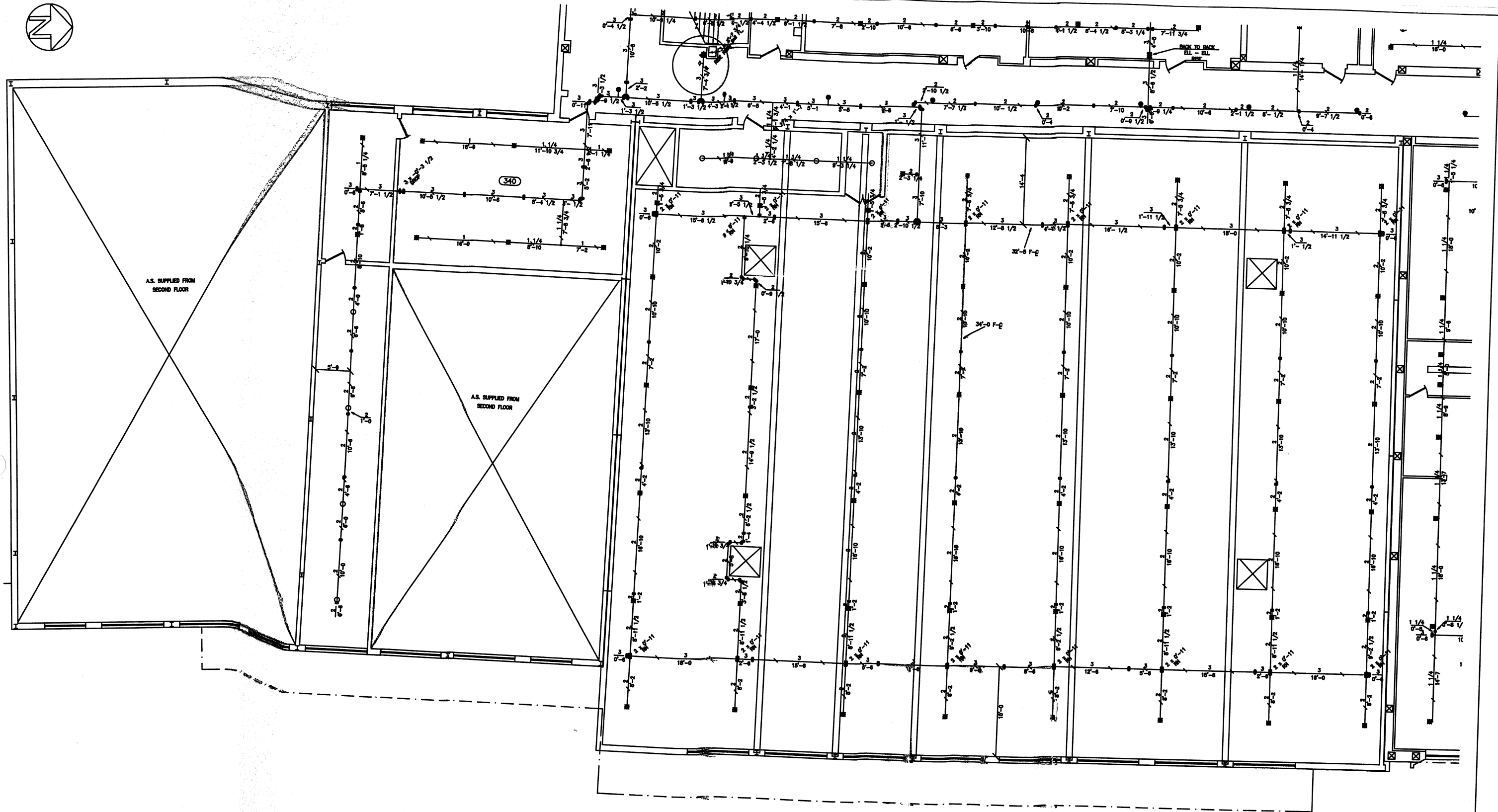
"AS BUILT" SEPT. 15, 2002"

NATHAN HALE SENIOR HIGH SCHOOL
EAST 21ST STREET - TULSA OKLAHOMA

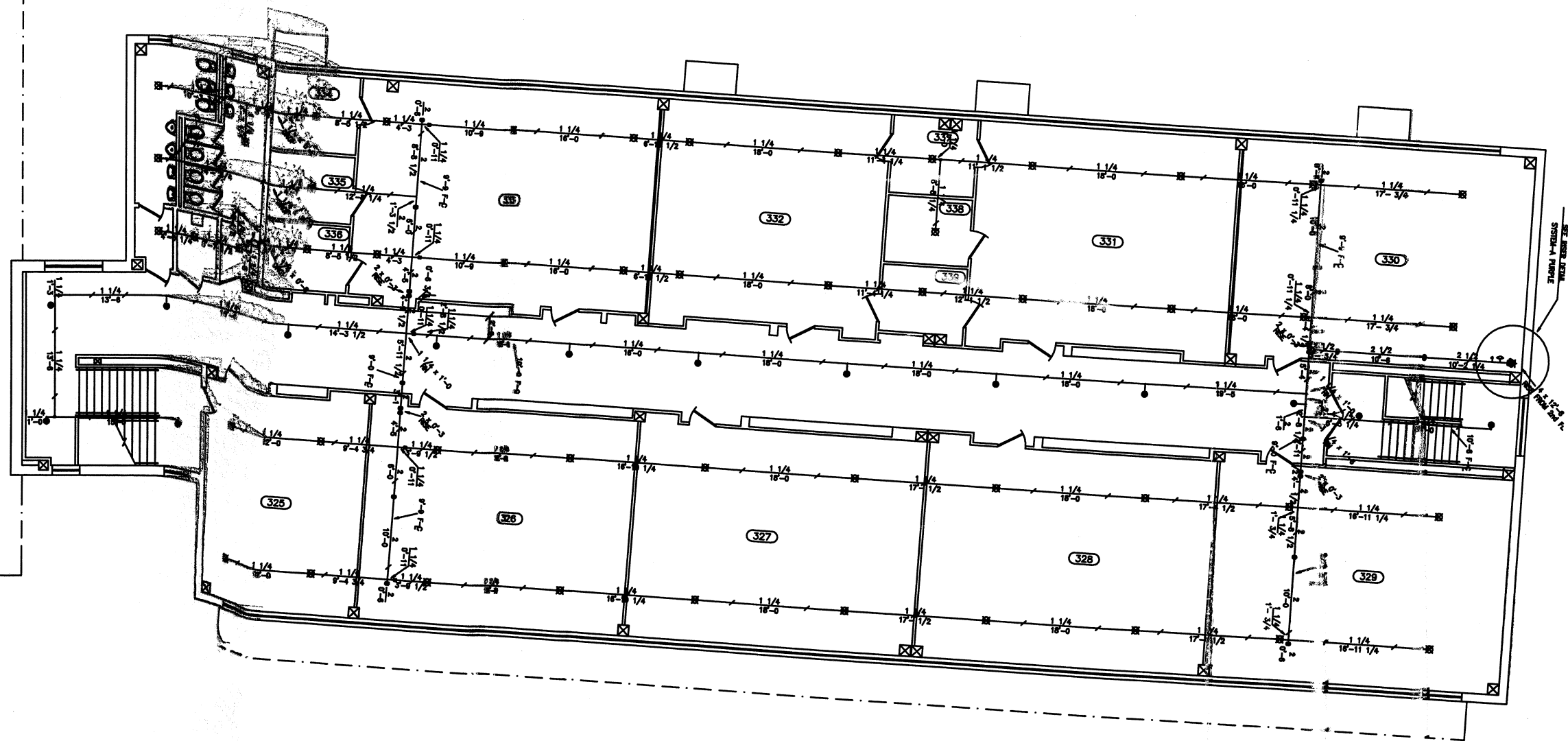
THIRD FLOOR PLAN
UNIT B
FIRE PROTECTION



<h1 style="text-align: center;">NATHAN HALE SENIOR HIGH SCHOOL</h1> <p style="text-align: center;">EAST 21ST STREET — TULSA OKLAHOMA</p>			
<h2>THIRD FLOOR PLAN</h2> <h3>UNIT C</h3> <h3>FIRE PROTECTION</h3>			
DRAWING BY: DEY, LLC CHECK: BY: J. PALMER JR. DATE: 03/05/02	DWG NO. <div style="text-align: right; font-size: 1.5em;">F303</div>	REV <div style="text-align: center; font-size: 1.5em;">1</div>	
	SCALE: 1/8" = 1"	SHEET: 3 OF 6	



THIRD FLOOR PLAN
UNIT D
FIRE PROTECTION



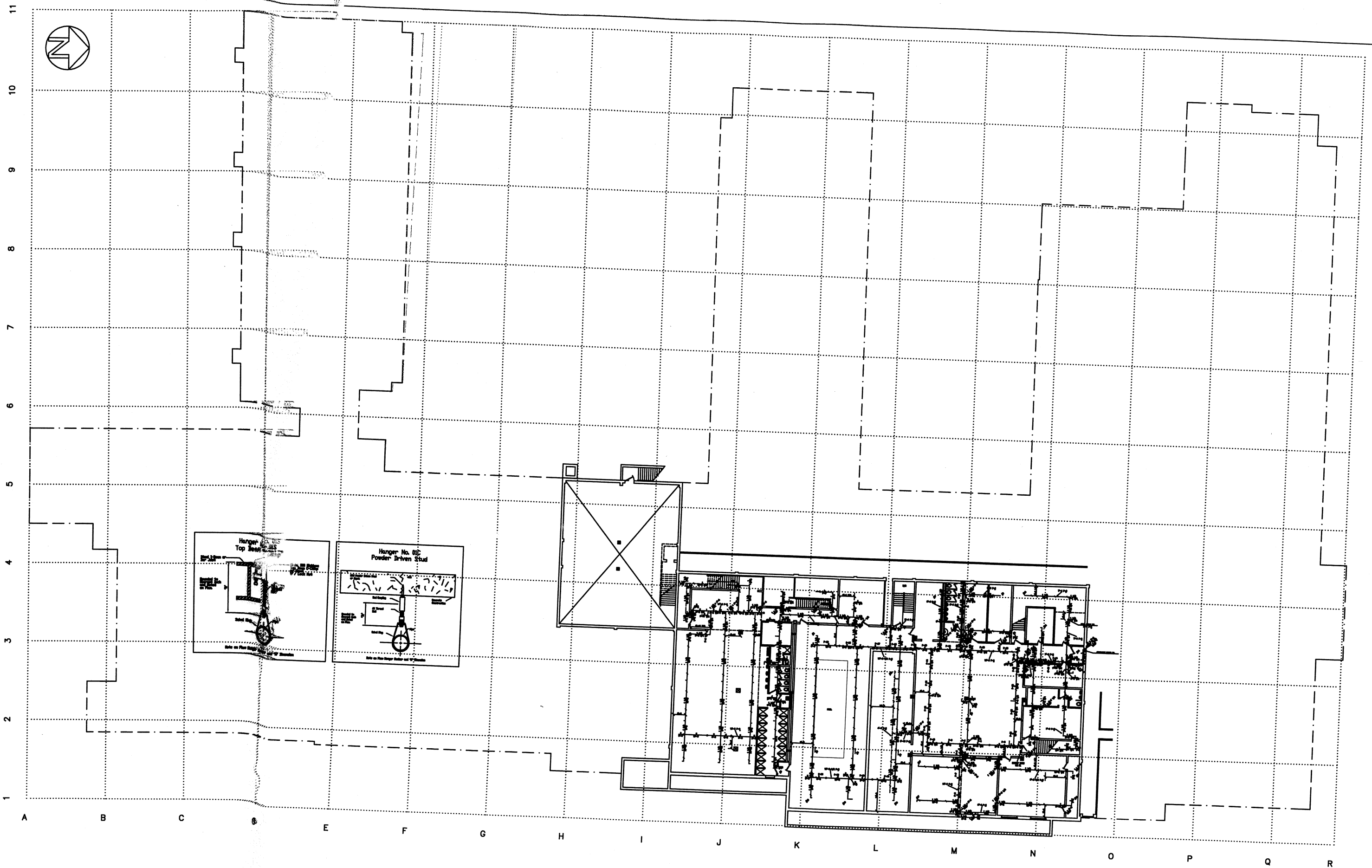
KEY PLAN



"AS BUILT- S 15, 2002

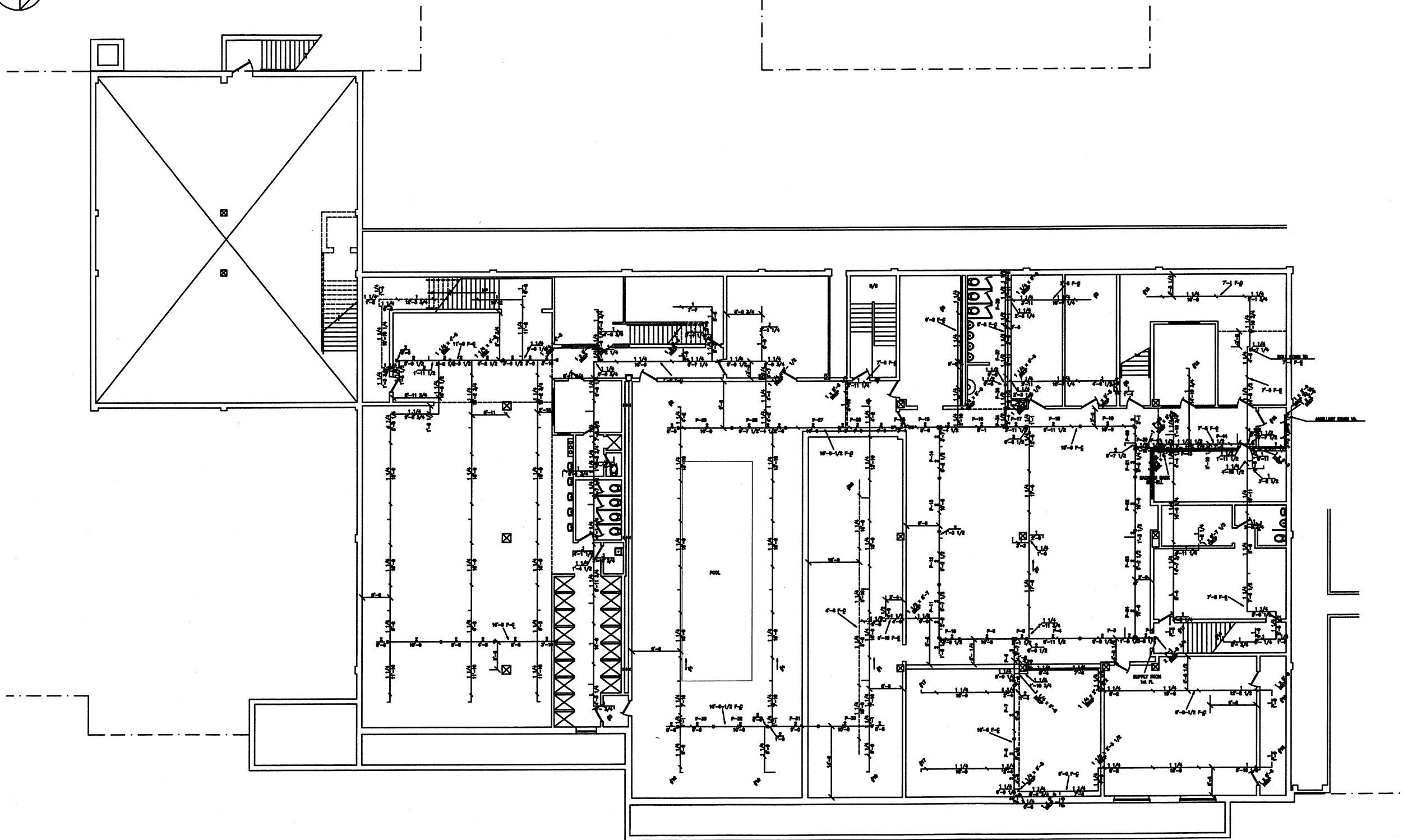
NATHAN HALE SENIOR HIGH SCHOOL
EAST 21ST STREET - TULSA OKLAHOMA

THIRD FLOOR PLAN

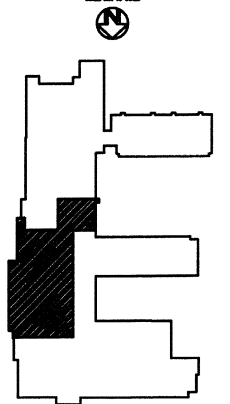


"AS BUILT- SEPT. 15, 2002"

NATHAN HALE SENIOR HIGH SCHOOL EAST 21ST STREET - TULSA OKLAHOMA		
BASEMENT FLOOR PLAN FIRE PROTECTION		
DRAWN BY: DST, LLC	DWG NO.	REV

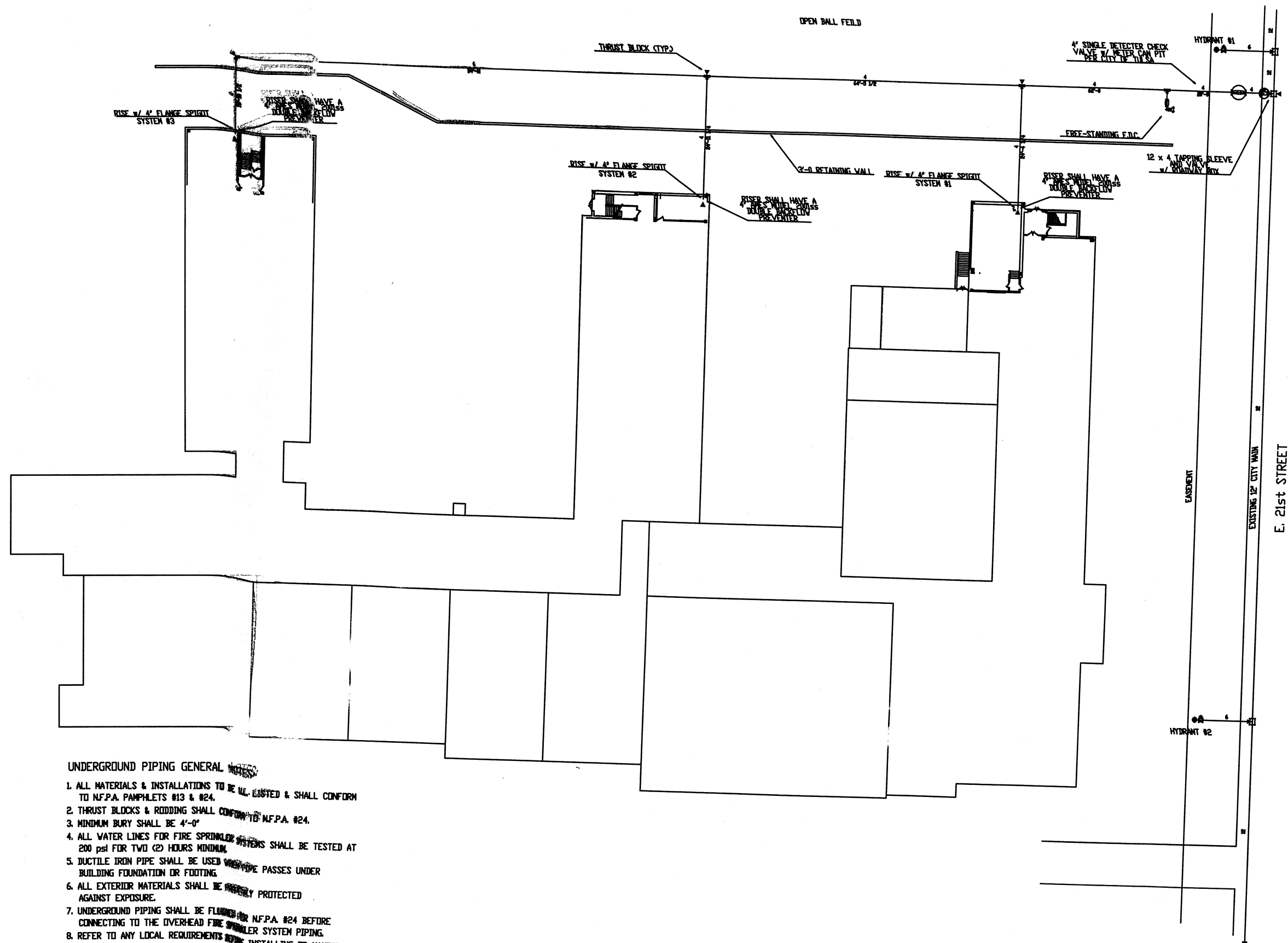


KEY PLAN



"AS BUILT- SEPT. 15, 2002"

NATHAN HALE SENIOR HIGH SCHOOL EAST 21ST STREET - TULSA OKLAHOMA			
BASEMENT FLOOR PLAN UNIT F FIRE PROTECTION			
DRAWN BY: DST, LLC	DWG NO.	F401	REV 1
CHECK BY: J. PALMER JR.	DATE: 03/05/02	SCALE: 3/32" = 1"	SHEET: 2 OF 2



UNDERGROUND PIPING GENERAL NOTES

1. ALL MATERIALS & INSTALLATIONS TO BE UL LISTED & SHALL CONFORM TO NFPA PAMPHLETS #13 & #24.
2. THRUST BLOCKS & RODDING SHALL CONFORM TO NFPA #24.
3. MINIMUM BURY SHALL BE 4'-0"
4. ALL WATER LINES FOR FIRE SPRINKLER SYSTEMS SHALL BE TESTED AT 200 psi FOR TWO (2) HOURS MINIMUM.
5. DUCTILE IRON PIPE SHALL BE USED WHERE IT PASSES UNDER BUILDING FOUNDATION OR FOOTING.
6. ALL EXTERIOR MATERIALS SHALL BE PROPERLY PROTECTED AGAINST EXPOSURE.
7. UNDERGROUND PIPING SHALL BE FLUSHED FOR NFPA #24 BEFORE CONNECTING TO THE OVERHEAD FIRE SPRINKLER SYSTEM PIPING.
8. REFER TO ANY LOCAL REQUIREMENTS BEFORE INSTALLING OR MAKING A CONNECTION TO THE FIRE SERVICE CONNECTION.
9. CLASS 200 PIPING SHALL BE USED FOR SECTIONS OF PIPING PRESSURIZED BY A FIRE DEPARTMENT CONNECTION OR ON SITE FIRE PUMP WHERE THE OPERATION PRESSURE EXCEEDS 200 PSI.
10. OTHERS TO PROVIDE A SWING CHECK VALVE AT THE FIRE SERVICE TAP TO ENABLE HYDROSTATIC TESTING OF THE UNDERGROUND MAINS.

"AS BUILT- SEPT. 15, 2002"

WATER FLOW INFORMATION	
2/8/2002	
STATIC: 83 psi	
RESIDUAL: 80 psi	
FLOW: 58 gpm / 1137 gpm	

"AS BUILT- SEPT. 15, 2002"

NATHAN HALE SENIOR HIGH SCHOOL
EAST 21ST STREET - TULSA OKLAHOMA

SITE PLAN
FIRE PROTECTION

DRAWN BY: DDT, LLC
CHECK BY: J. PALMER, JR.

DWG NO.

F500

REV
1