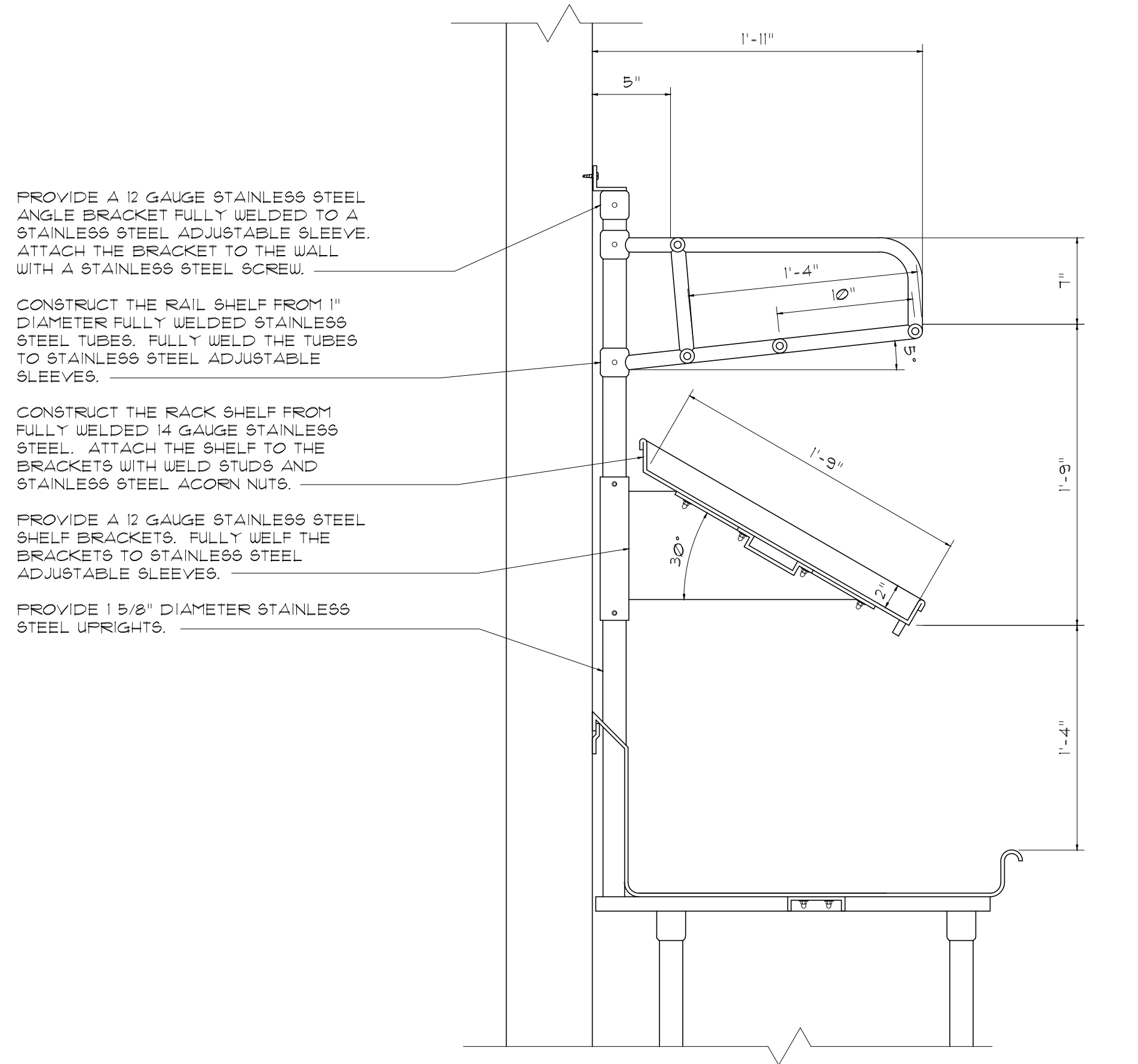
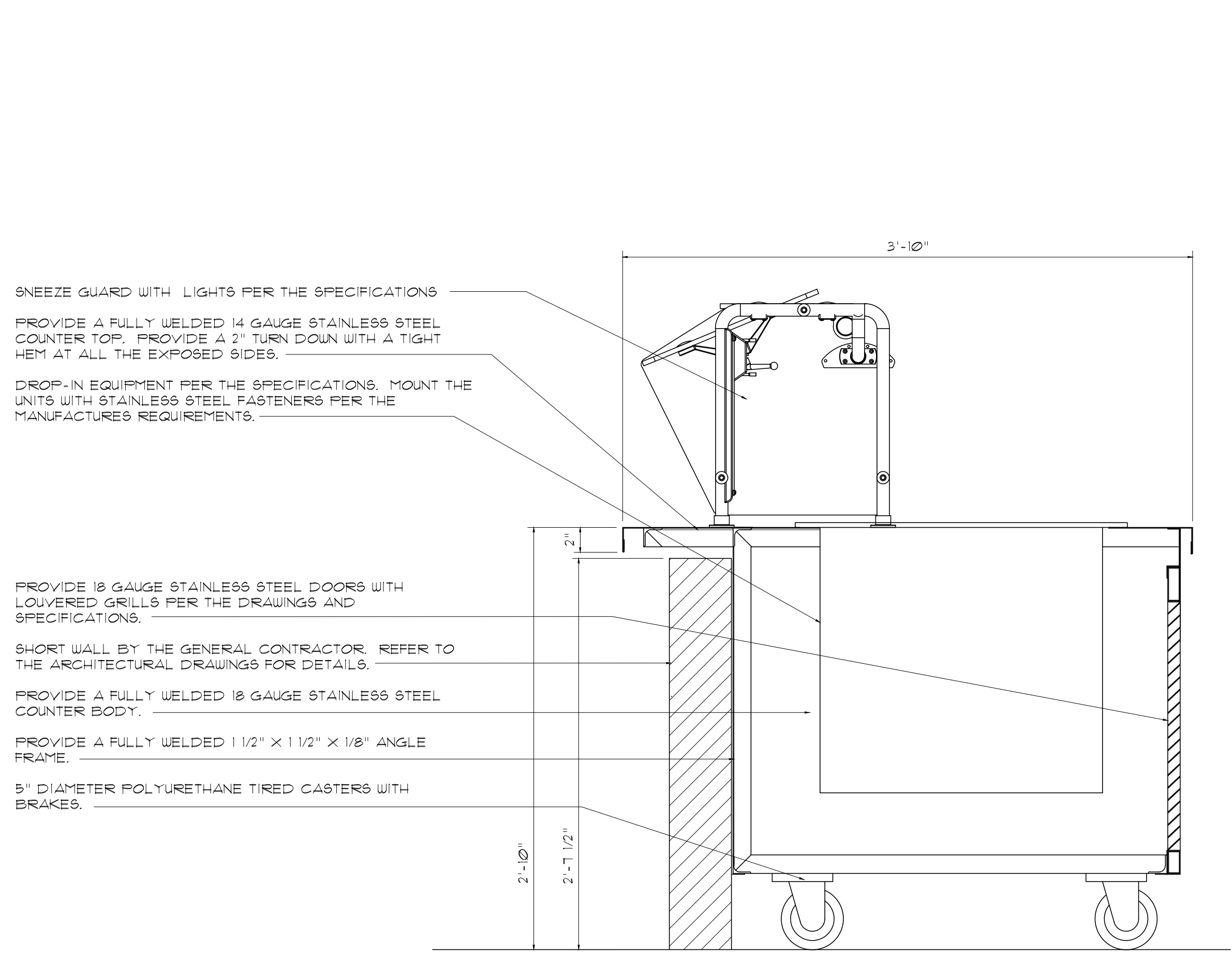


FOODSERVICE EQUIPMENT SCHEDULE	
NO.	DESCRIPTION
01	AIR DOOR
02	LOCKERS WITH COAT BAR
03	DRYER BY THE OWNER
04	WASHER BY THE OWNER
05	HOP SINK BY THE PLUMBING CONTRACTOR
06	CHEMICAL STORAGE SHELVING
07	LINE STORAGE SHELVING
08	WALK-IN COOLER & FREEZER
09	NUMBER NOT USED
10	MOBILE DUNNAGE RACKS
11	CAN RACKS
12	STORAGE SHELVING
13	MOBILE DUNNAGE RACKS
14	CAN RACKS
15	HAND SINK
16	MOBILE BREAD RACK BY THE VENDOR
17	ICE MAKER
18	WORK TABLE
19	MOBILE TRAY DRYING RACKS
20	TRASH CANS
21	MOBILE UTILITY CART
22	MOBILE COOLING RACK
23	VEGETABLE FREEZING TABLE
24	MOBILE PAN RACK
25	NUMBER NOT USED
26	NUMBER NOT USED
27	MOBILE ROTATING CONVECTION OVEN
28	RANGE
29	NUMBER NOT USED
30	VARIO PRO 2-3
31	MOBILE COMBI OVEN
32	VENTILATOR BY THE MECHANICAL CONTRACTOR
33	FIRE SUPPRESSION SYSTEM BY THE MECHANICAL CONTRACTOR
34	MOBILE PROOF-HOT CABINET
35	COOK'S TABLE
36	FREEZER TABLE
37	CLEAN DISHTABLE & POT SINK
38	BACK-UP COUNTER
39	VENTLESS DISHWASHER WITH BOOSTER HEATER
40	SOILED DISHTABLE
41	WALL MOUNTED HOSE REEL
42	BACK-UP COUNTER
43	HOT CABINET
44	REFRIGERATOR
45	PASS-THRU REFRIGERATOR
46	PASS-THRU HOT CABINET
47	NUMBER NOT USED
48	ROLL-IN HOT CABINET
49	BACK-UP COUNTER
50	NUMBER NOT USED
51	MOBILE MEXICAN SERVING COUNTER
52	DROP-IN COLD FOOD WELLS
53	DROP-IN HOT FOOD WELLS
54	MOBILE PIZZA SERVING COUNTER
55	DROP-IN PIZZA WARMER
56	DROP-IN HOT FOOD WELLS
57	MOBILE DELI SERVING COUNTER
58	MOBILE REFRIGERATOR RACK (ONLY ONE SHOWN ON PLAN)
59	DROP-IN HOT FOOD WELLS
60	DROP-IN COLD FOOD WELLS
61	FANNI PRESS
62	NUMBER NOT USED
63	MOBILE ELECTRIC CONVECTION OVEN AND PROOFER
64	BACK-UP COUNTER
65	MOBILE ADVENTURE SERVING COUNTER
66	DROP-IN HOT FOOD WELLS
67	MOBILE GRILL SERVING COUNTER
68	MOBILE BREAD CABINET
69	MOBILE GRAB-N-GO REFRIGERATED MERCHANDISER
70	NUMBER NOT USED
71	MOBILE CASHIER COUNTER
72	FOB BY THE OWNER
73	CAUP RACK BY THE VENDOR
74	NUMBER NOT USED
75	NUMBER NOT USED
76	DISPOSABLE CUP DISPENSER
77	SLUSHIE MACHINE
78	TRASH COUNTER BY THE MILLWORK CONTRACTOR
79	MICROWAVE COUNTER BY THE MILLWORK CONTRACTOR
80	FRESH FRUIT COUNTER
81	DROP-IN COLD FOOD WELLS
82	
83	
84	

1 FOODSERVICE EQUIPMENT ARRANGEMENT PLAN
1/4" = 1'-0"



2 SECTION - SOILED DISHTABLE RACK & RAIL SHELVES
NO SCALE



3 SECTION - TYPICAL SERVING COUNTER
NO SCALE

STURM CONSULTING, INC.
FOODSERVICE DESIGN & PLANNING

STURM CONSULTING, INC.
FOODSERVICE DESIGN & PLANNING

5838 SOUTH HUDSON PLACE
TULSA, OKLAHOMA 74135
PHONE (918) 260-0687
rockysturm@cox.net

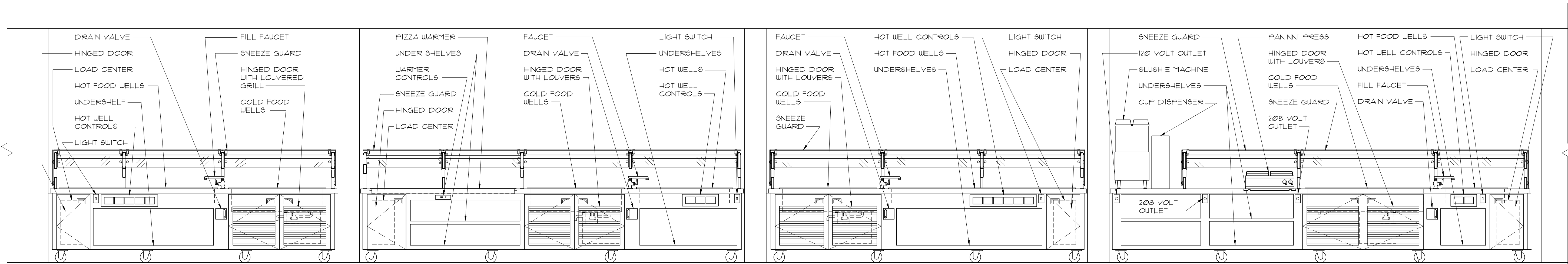
REVISIONS	DATE	BY	SYM

MEMORIAL HIGH SCHOOL CAFETERIA REMODEL

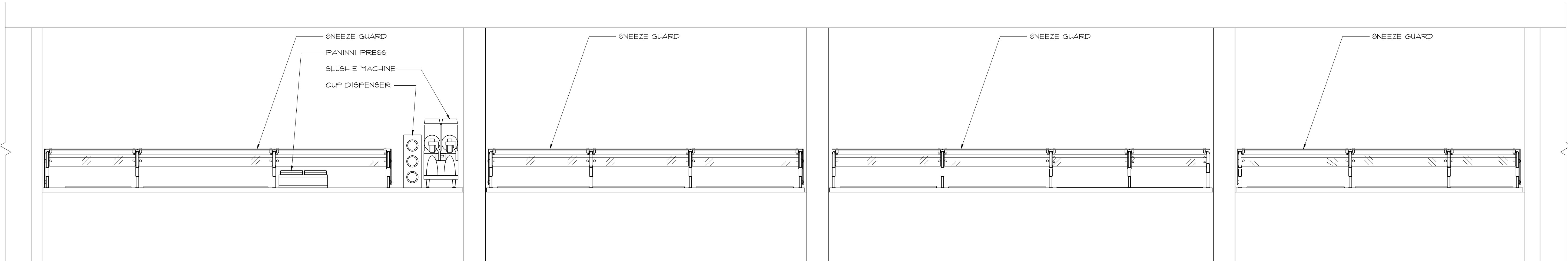
5840 S. HUDSON AVE. TULSA, OK 74135

FOODSERVICE EQUIPMENT
ARRANGEMENT PLAN

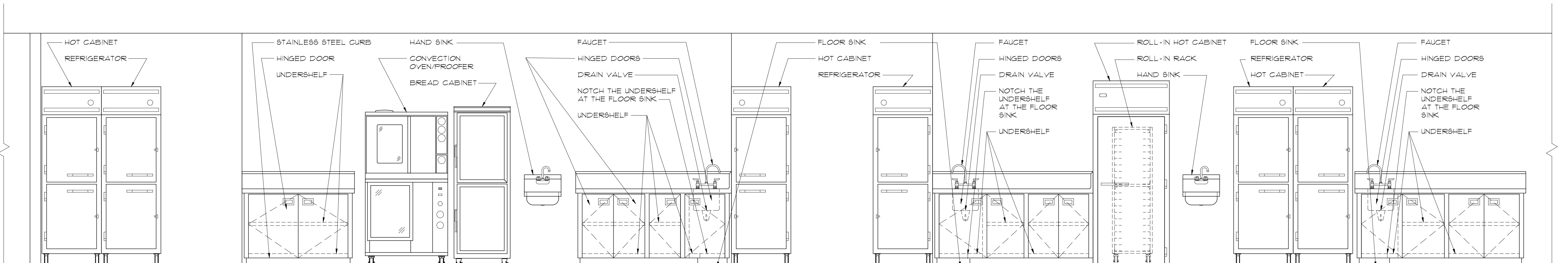
DATE:	09/30/2022
DESIGNER:	RJS
DRAWN BY:	RJS
SCALE:	AS NOTED
PAGE	FS1.1
NO	2020.11



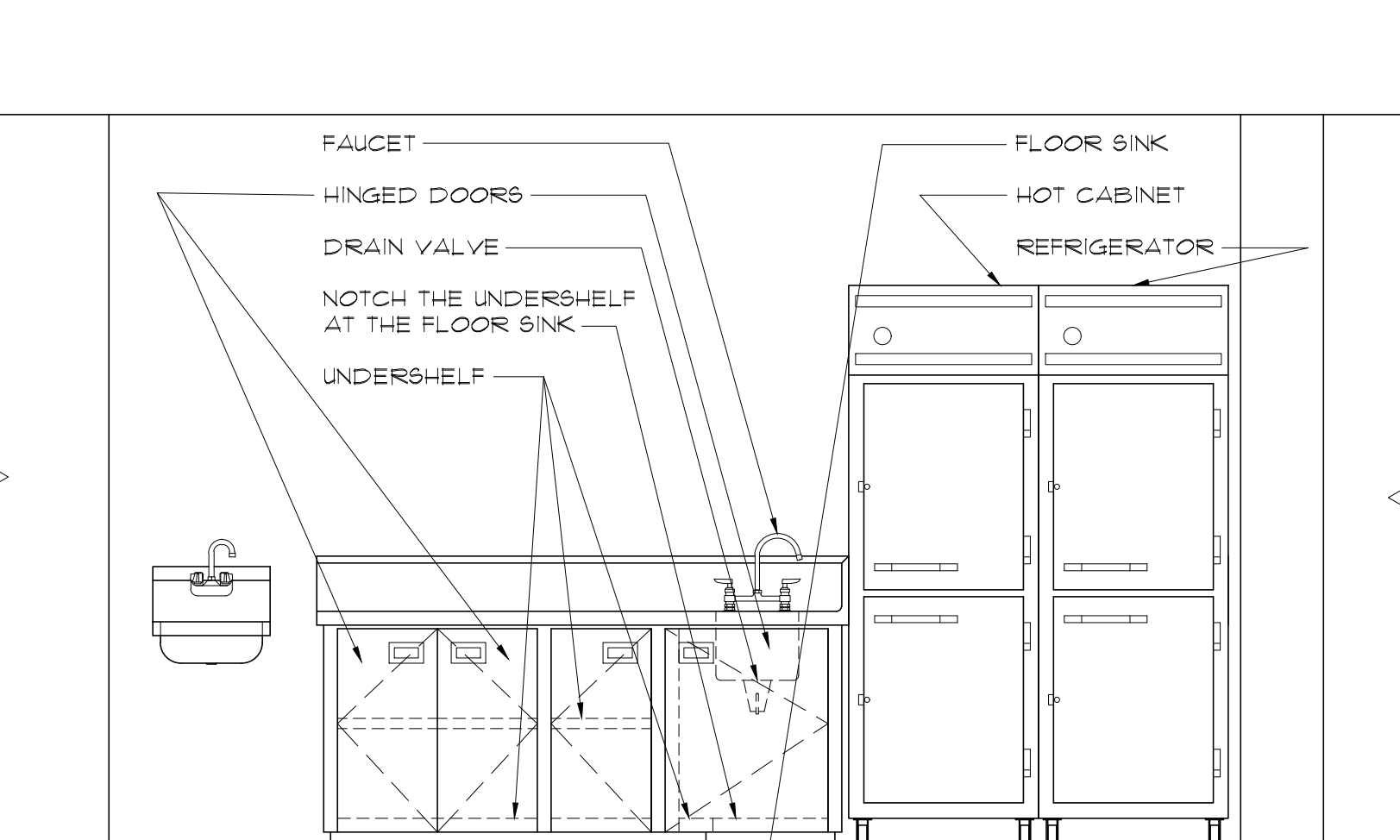
1 ELEVATION
1/2" = 1'-0"



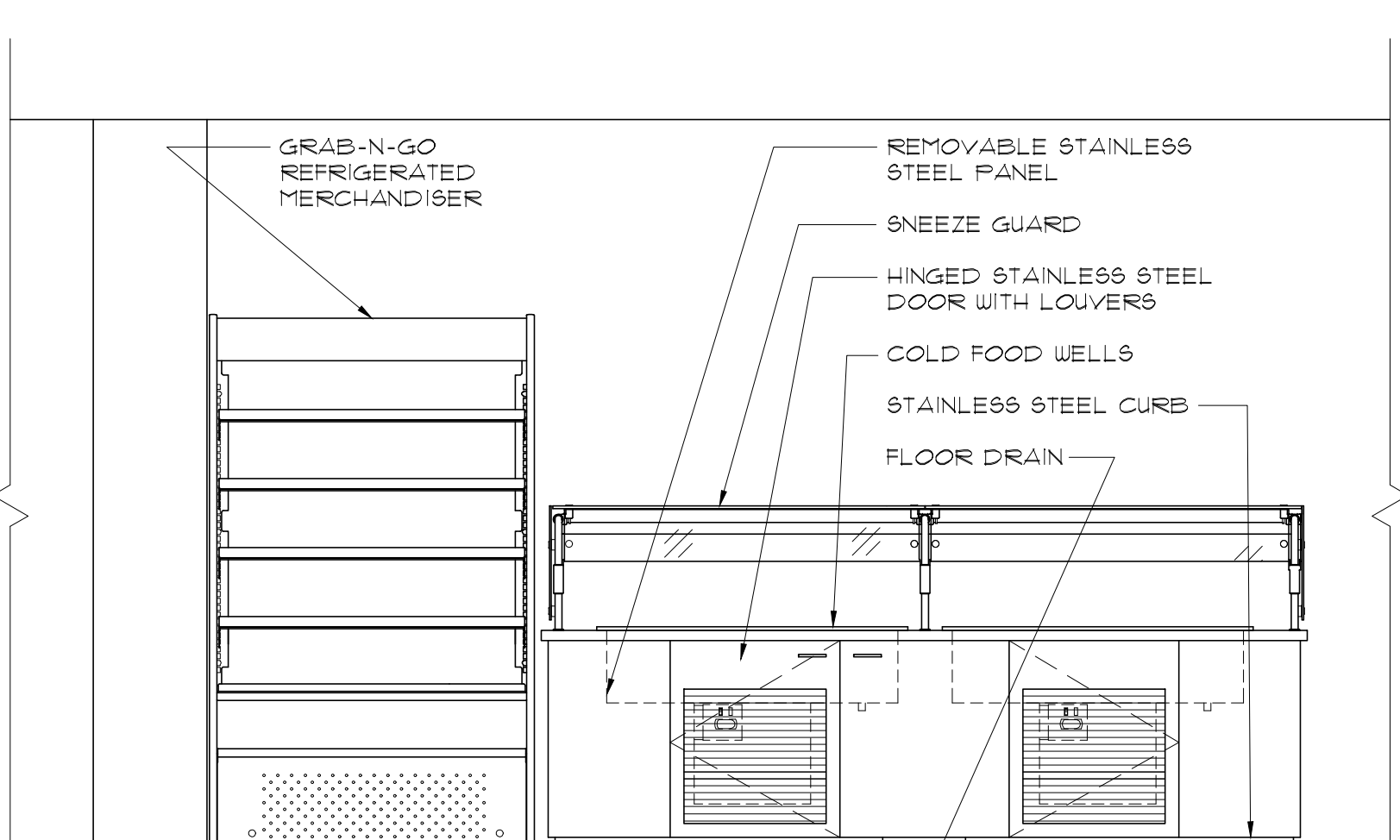
2 ELEVATION
1/2" = 1'-0"



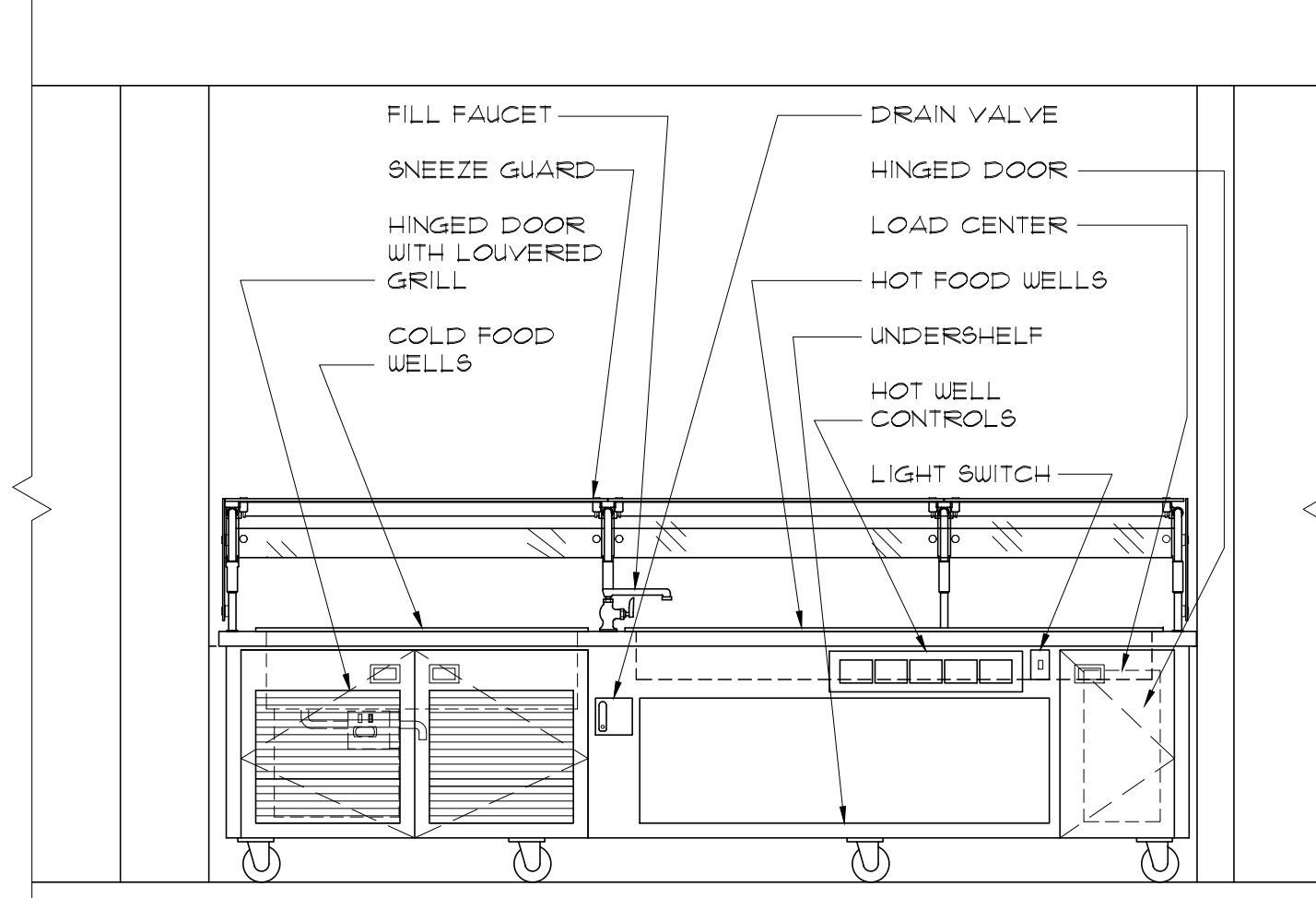
3 ELEVATION
1/2" = 1'-0"



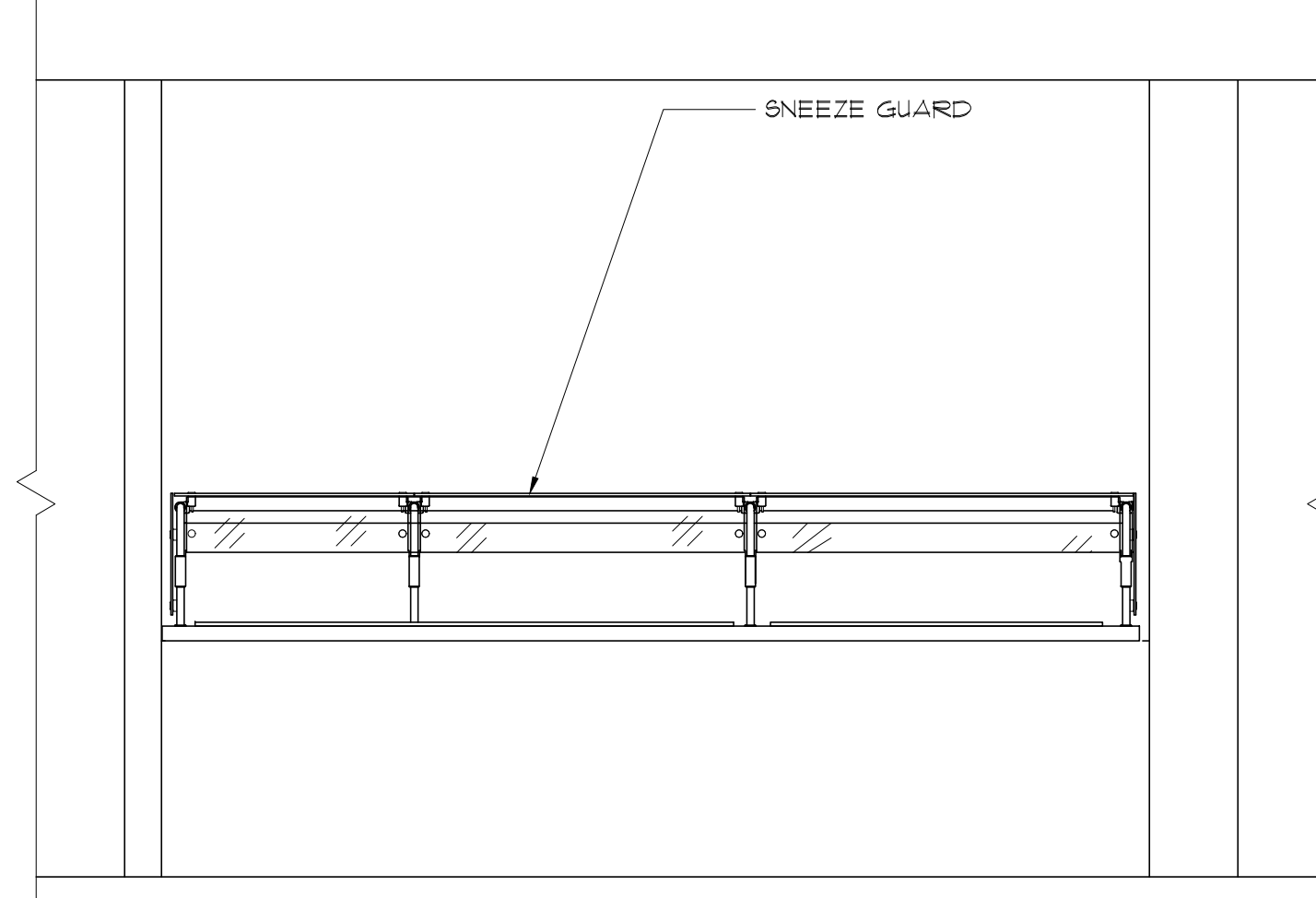
4 ELEVATION
1/2" = 1'-0"



5 ELEVATION
NO SCALE



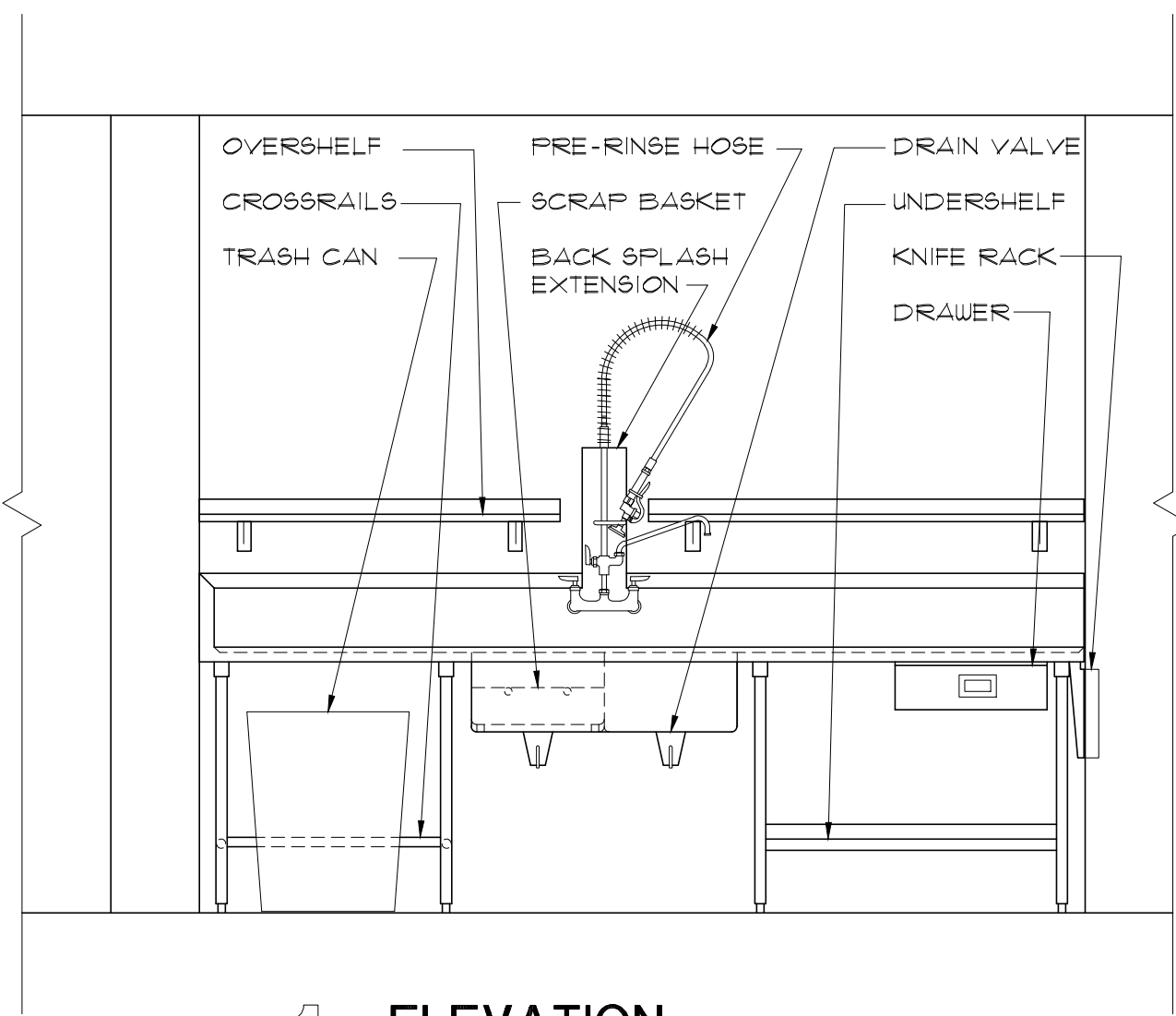
6 ELEVATION
1/2" = 1'-0"



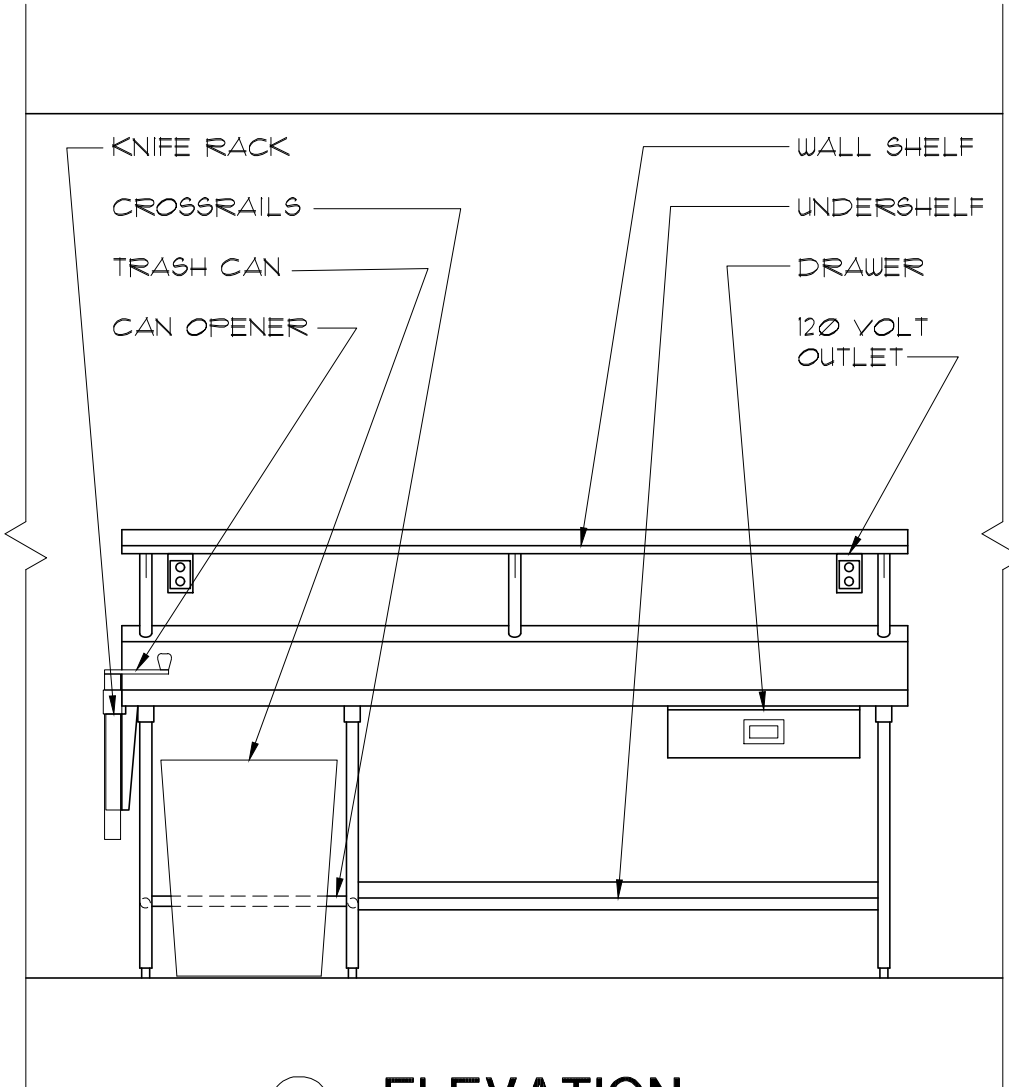
7 ELEVATION
1/2" = 1'-0"

REVISIONS	DATE	BY	SYM

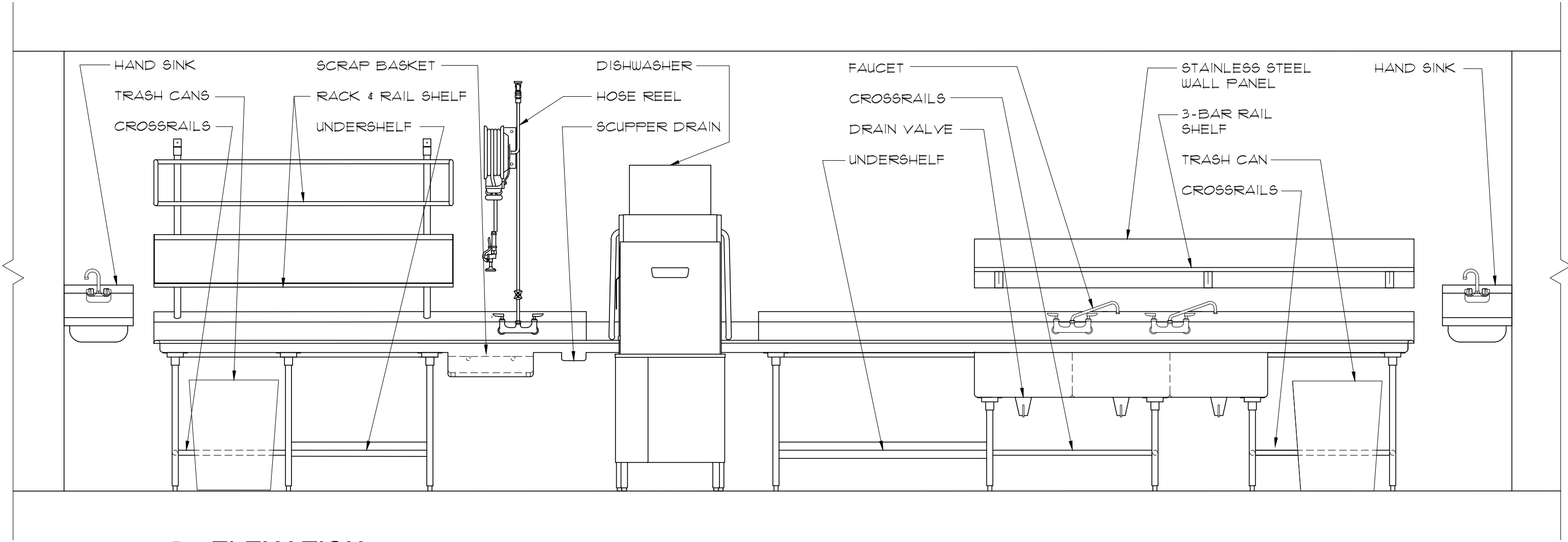
DATE:	09/30/2022
DESIGNER:	RJS
DRAWN BY:	RJS
SCALE:	AS NOTED
PAGE	FS1.2
NO	2020.11



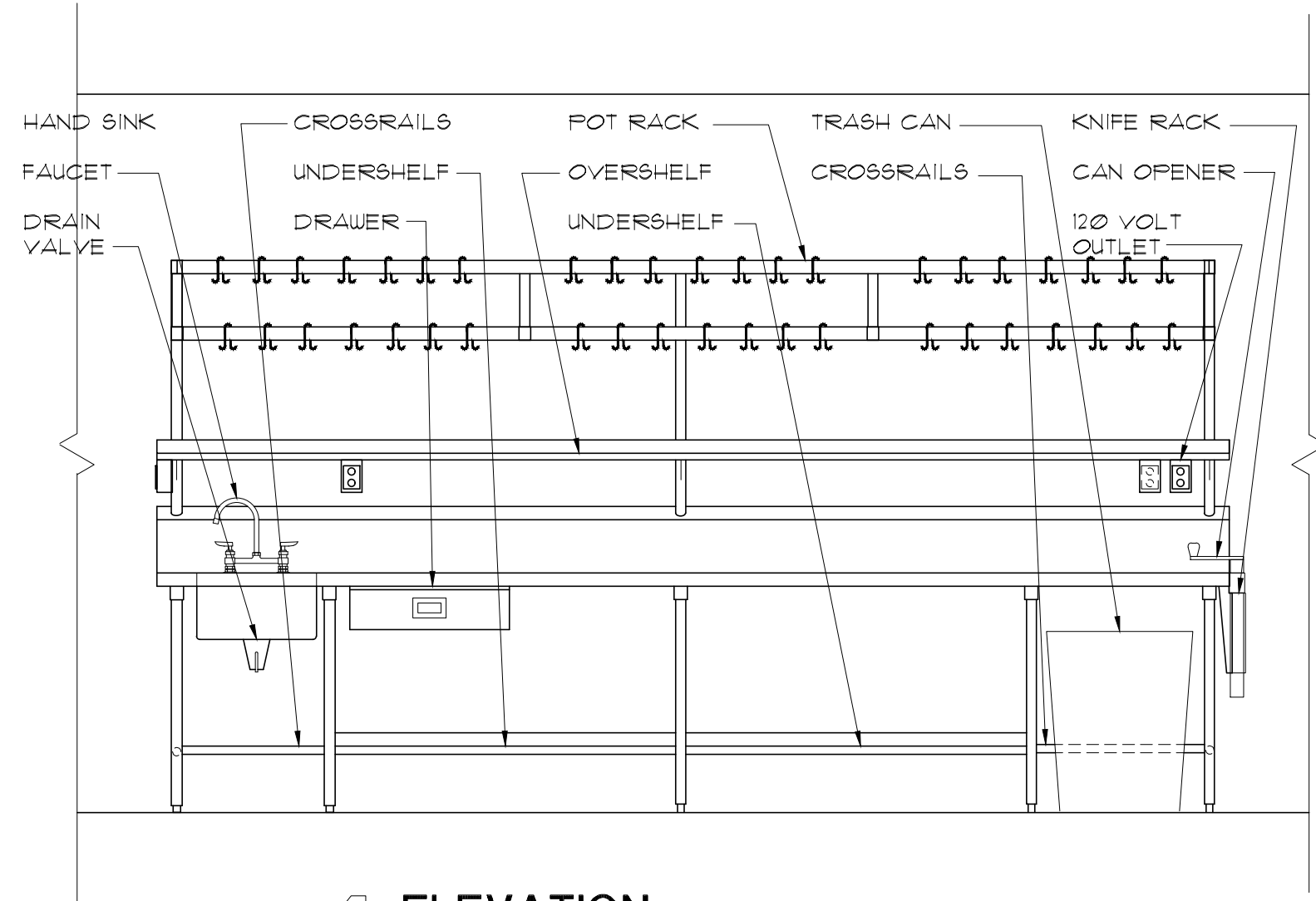
1 ELEVATION
1/2" = 1'-0"



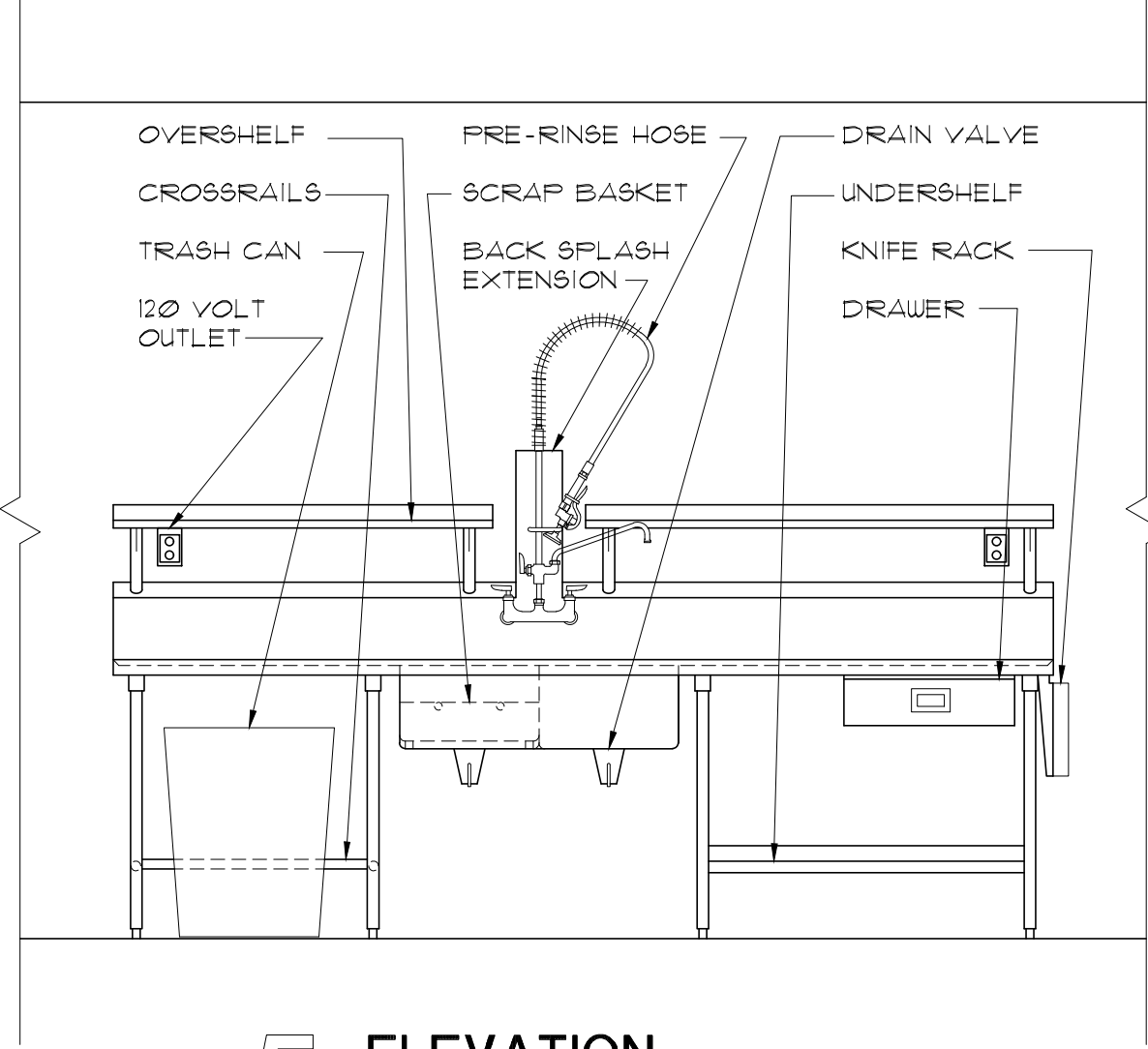
2 ELEVATION
1/2" = 1'-0"



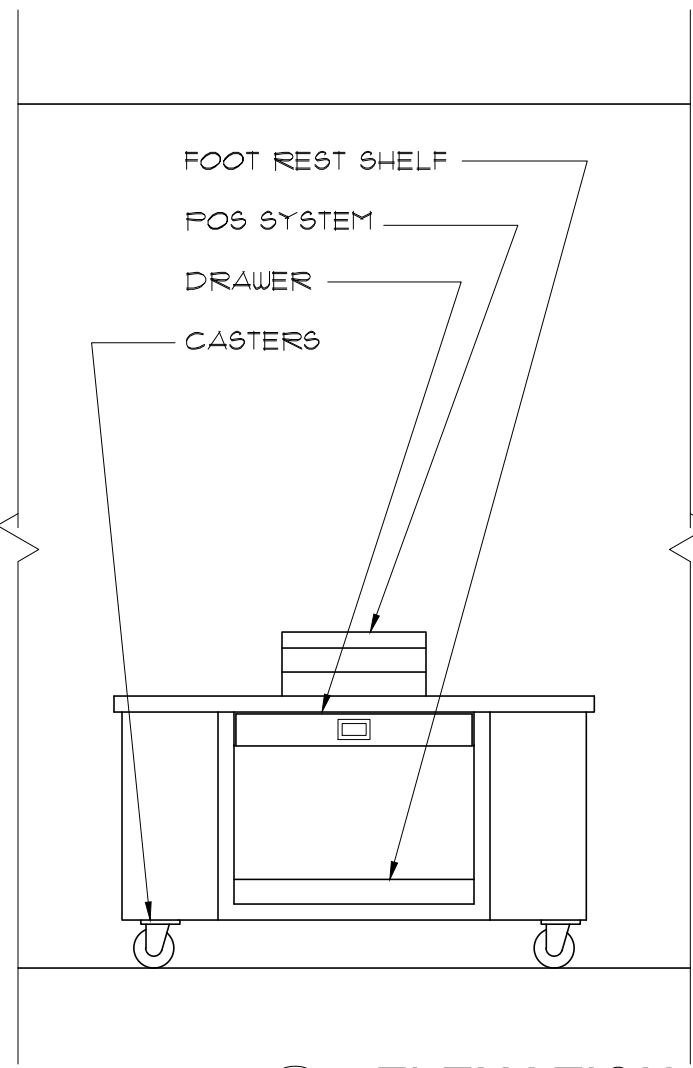
3 ELEVATION
NO SCALE



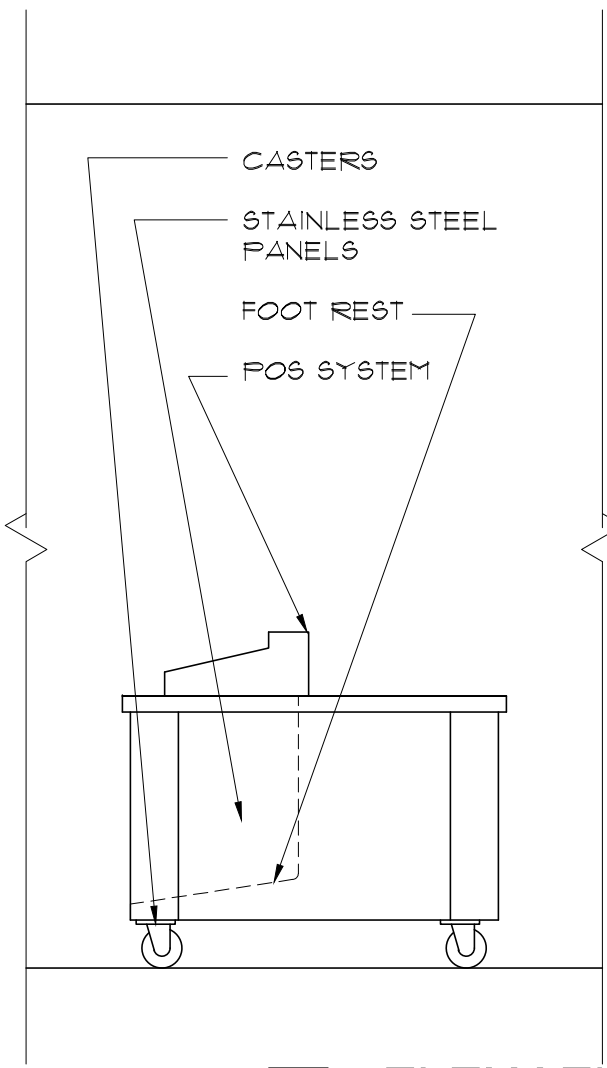
4 ELEVATION
NO SCALE



5 ELEVATION
1/2" = 1'-0"



6 ELEVATION
1/2" = 1'-0"



7 ELEVATION
1/2" = 1'-0"

REVISIONS	DATE	BY	SYM

DATE:	09/30/2022
DESIGNER:	RJS
DRAWN BY:	RJS
SCALE:	AS NOTED
PAGE	FS1.3
NO	2020.11

Q38450-50

- OVERALL DIMENSIONS WIDTH 27'-0" DEPTH 14'-8 1/2" HEIGHT 9'-3" 48
- FINISH-Exterior
- ☐ 26 Ga. Stucco Embossed Galv. Steel
 - ☐ 26 Ga. Stucco Aluminum
 - ☐ 20 Ga. Type 304 #3 Finish Stainless Steel
 - ☐ White Stucco Aluminum
 - ☐ White Smooth Aluminum
 - ☐ White Stucco Galv.
 - ☐ White Smooth Galv.
- FINISH-Interior
- ☐ Bulk-in by others. (Breaker strip must be under all wall panels including partitions)
 - ☐ 4" x 2" Vinyl U-Channel Screeds
 - ☐ 14 Ga. Bright Galvanized Steel
 - ☐ Smooth Aluminum
 - ☐ Treadtile Aluminum Foamed-In-Place
- Interior (walls and ceiling)
- ☐ 26 Ga. Stucco Embossed Galv. Steel
 - ☐ 26 Ga. Stucco Aluminum
 - ☐ 20 Ga. Type 304 #3 Finish Stainless Steel
 - ☐ White Stucco Aluminum
 - ☐ White Smooth Aluminum
 - ☐ White Stucco Galv.
 - ☐ White Smooth Galv.
- CEILING
- ☐ 26 Ga. Stucco Aluminum
 - ☐ 20 Ga. Type 304 #3 Finish Stainless Steel
 - ☐ White Stucco Aluminum
 - ☐ White Smooth Aluminum
 - ☐ White Stucco Galv.
 - ☐ White Smooth Galv.
- SEE DETAIL BELOW

THERMO-KOOL WALK-IN FLOOR PANELS ARE DESIGNED TO WITHSTAND UNIFORM, DISTRIBUTED STATIONARY LOADS OF 800 LBS. PER SQUARE FOOT. THERMO-KOOL'S WARRANTY DOES NOT COVER DAMAGE DUE TO PALLET JACKS, MOBILE CARTS, MOBILE SHELVING, FORK LIFTS, OR ANY OTHER FORM OF ROLLING TRAFFIC. A CONCRETE WEARING FLOOR MUST BE INSTALLED ON TOP OF THE WALK-IN FLOOR PANELS FOR THIS APPLICATION.

SECTION FASTENERS-THERMO-KOOL cam type Insta-Lok INSULATION-4" Business "Foamed-In-Place" urethane-DURATHANE CONSTRUCTION CLASS I

- OUTDOOR INSTALLATION
- ☐ Vinyl weather roof w/ Faba Bar & Cover
 - ☐ Stopped Foam
 - ☐ 50 FT. OF 4 MIL. POLYETHYLENE (BETWEEN SLOPED FOAM & VINYL WEATHERCAP)
 - ☐ Aluminum weather roof by Thermo-Kool (W/Weathercap Trim)
- INDOOR INSTALLATION
- ☐ ELECTRICAL-All wiring contained within the door sections is 115/60/10. Connections to this and all other lights and refrigeration supplied by others.
 - ☐ UNEXPOSED CONDUIT - Wiring studs out top of panels @
 - ☐ EXPOSED CONDUIT - Wiring terminates in a field service box at top of panels
 - ☐ ENTRANCE DOOR-Flush infilling type with poly vinyl magnetic gasket and vinyl sweep gasket on bottom edge. Header cables are built in around door opening to prevent frost accumulation and sealant. Ext. has a thermometer, indicating light and toggle switch. Interior has vapor proof light. Hinges are cam action type.
 - ☐ Door finishes will be the same as adjacent panels unless specified otherwise under Door Accessories.

- DOOR SIZE & QTY.
- ☐ (2) 34" x 78"
 - ☐ (1) 30" x 78"
 - ☐ (1) 36" x 78"
- HARDWARE
- ☐ 1238-C LATCH, (2) 1346 PERFORMER ADJUSTABLE HINGES, DOOR CLOSER
 - ☐ 1238-C LATCH, (2) 1346 PERFORMER ADJUSTABLE HINGES, DOOR CLOSER
 - ☐ 2- RH
 - ☐ 2- LH
- SWING

- DOOR ACCESSORIES
- ☐ (1) 14" x 14" Prep Window(W/ HEATED FRAME & GLASS)
 - ☐ (2) 14" x 24" Prep Window(W/ HEATED FRAME & GLASS)
 - ☐ (2) KASON # 1808 LED LIGHT FIXTURE(S) (W/ BULBS ON DOOR FRAME(S))
 - ☐ (2) THERMO-KOOL TATTOO WALK-IN MONITOR SYSTEM (W/ TALKBACK PANE SWITCH, MOTION DETECTOR, BATTERY BACKUPS, DRY CONTACTS & THERMOSTATICALLY CONTROLLED HEATER WIRES)
 - ☐ (2) FOOT TRIP ALARMS
 - ☐ (1) DOOR HEATER(S)
 - ☐ (1) BACKUP FRAME HEATER WIRE(S) (INSTALLED BUT NOT OPERATIONAL) @ COOLER
 - ☐ (1) HIGH WATTAGE FRAME HEATER @ FREEZER
 - ☐ (1) BACKUP HIGH WATTAGE FRAME HEATER WIRE(S) (INSTALLED BUT NOT OPERATIONAL) @ FREEZER
 - ☐ (2) BACKUPS FOR CUSTOMER SUPPLIED VINYL SWING DOOR(S)

- MISCELLANEOUS EQUIPMENT
- ☐ (1) 14" x 14" Prep Window(W/ HEATED FRAME & GLASS)
 - ☐ Interior Floor Ramp
 - ☐ Exterior Floor Ramp
 - ☐ # 1825 Heated Pressure Relief Vent .5 AMPS EACH
 - ☐ # 1832-4 Heated Pressure Relief Vent .5 AMPS EACH
 - ☐ Trim & Enclosures (see detail)
- (1) ROW S/S TITAN BUMPER RAILS ON EXP. EXTERIOR (SHIPPED LOOSE)

- REFRIGERATION-
- ☐ Aircooled
 - ☐ Watercooled
 - ☒ By DEALER
- CONTROL KIT-The following controls indicated with a mark are included
- ☐ Expansion valve
 - ☐ Sight glass
 - ☐ Temperature control
 - ☐ Pump down solenoid valve
 - ☐ Freezer Time Clock
 - ☐ Pressure control
 - ☐ Section free vibration eliminator
 - ☐ Winter control
 - ☐ Condensate heater
 - ☐ Condensing unit cover
 - ☐ Coil Mounting Kit

- CONDENSING UNIT
- ☐ Condensing unit indoor
 - ☐ Condensing unit outdoor
 - ☐ Side Mounted Self Contained
 - ☐ Top Mounted Self Contained
 - ☐ Quick Connect
 - ☐ Remote
 - ☐ Top Mounted
 - ☐ Prewired, Preassembled Remote
- CONDENSING UNIT
- ☐ Condensing unit indoor
 - ☐ Condensing unit outdoor
 - ☐ Side Mounted Self Contained
 - ☐ Top Mounted Self Contained
 - ☐ Quick Connect
 - ☐ Remote
 - ☐ Top Mounted
 - ☐ Prewired, Preassembled Remote

- CONDENSING UNIT
- ☐ Condensing unit indoor
 - ☐ Condensing unit outdoor
 - ☐ Side Mounted Self Contained
 - ☐ Top Mounted Self Contained
 - ☐ Quick Connect
 - ☐ Remote
 - ☐ Top Mounted
 - ☐ Prewired, Preassembled Remote
- CONDENSING UNIT
- ☐ Condensing unit indoor
 - ☐ Condensing unit outdoor
 - ☐ Side Mounted Self Contained
 - ☐ Top Mounted Self Contained
 - ☐ Quick Connect
 - ☐ Remote
 - ☐ Top Mounted
 - ☐ Prewired, Preassembled Remote

- CONDENSING UNIT
- ☐ Condensing unit indoor
 - ☐ Condensing unit outdoor
 - ☐ Side Mounted Self Contained
 - ☐ Top Mounted Self Contained
 - ☐ Quick Connect
 - ☐ Remote
 - ☐ Top Mounted
 - ☐ Prewired, Preassembled Remote
- CONDENSING UNIT
- ☐ Condensing unit indoor
 - ☐ Condensing unit outdoor
 - ☐ Side Mounted Self Contained
 - ☐ Top Mounted Self Contained
 - ☐ Quick Connect
 - ☐ Remote
 - ☐ Top Mounted
 - ☐ Prewired, Preassembled Remote

- CONDENSING UNIT
- ☐ Condensing unit indoor
 - ☐ Condensing unit outdoor
 - ☐ Side Mounted Self Contained
 - ☐ Top Mounted Self Contained
 - ☐ Quick Connect
 - ☐ Remote
 - ☐ Top Mounted
 - ☐ Prewired, Preassembled Remote
- CONDENSING UNIT
- ☐ Condensing unit indoor
 - ☐ Condensing unit outdoor
 - ☐ Side Mounted Self Contained
 - ☐ Top Mounted Self Contained
 - ☐ Quick Connect
 - ☐ Remote
 - ☐ Top Mounted
 - ☐ Prewired, Preassembled Remote

- CONDENSING UNIT
- ☐ Condensing unit indoor
 - ☐ Condensing unit outdoor
 - ☐ Side Mounted Self Contained
 - ☐ Top Mounted Self Contained
 - ☐ Quick Connect
 - ☐ Remote
 - ☐ Top Mounted
 - ☐ Prewired, Preassembled Remote
- CONDENSING UNIT
- ☐ Condensing unit indoor
 - ☐ Condensing unit outdoor
 - ☐ Side Mounted Self Contained
 - ☐ Top Mounted Self Contained
 - ☐ Quick Connect
 - ☐ Remote
 - ☐ Top Mounted
 - ☐ Prewired, Preassembled Remote

- CONDENSING UNIT
- ☐ Condensing unit indoor
 - ☐ Condensing unit outdoor
 - ☐ Side Mounted Self Contained
 - ☐ Top Mounted Self Contained
 - ☐ Quick Connect
 - ☐ Remote
 - ☐ Top Mounted
 - ☐ Prewired, Preassembled Remote
- CONDENSING UNIT
- ☐ Condensing unit indoor
 - ☐ Condensing unit outdoor
 - ☐ Side Mounted Self Contained
 - ☐ Top Mounted Self Contained
 - ☐ Quick Connect
 - ☐ Remote
 - ☐ Top Mounted
 - ☐ Prewired, Preassembled Remote

- CONDENSING UNIT
- ☐ Condensing unit indoor
 - ☐ Condensing unit outdoor
 - ☐ Side Mounted Self Contained
 - ☐ Top Mounted Self Contained
 - ☐ Quick Connect
 - ☐ Remote
 - ☐ Top Mounted
 - ☐ Prewired, Preassembled Remote
- CONDENSING UNIT
- ☐ Condensing unit indoor
 - ☐ Condensing unit outdoor
 - ☐ Side Mounted Self Contained
 - ☐ Top Mounted Self Contained
 - ☐ Quick Connect
 - ☐ Remote
 - ☐ Top Mounted
 - ☐ Prewired, Preassembled Remote

IMPORTANT!

THERMO-KOOL WALK-IN FLOOR PANELS ARE DESIGNED TO WITHSTAND UNIFORM, DISTRIBUTED STATIONARY LOADS OF 800 LBS. PER SQUARE FOOT. THERMO-KOOL'S WARRANTY DOES NOT COVER DAMAGE DUE TO PALLET JACKS, MOBILE CARTS, MOBILE SHELVING, FORK LIFTS, OR ANY OTHER FORM OF ROLLING TRAFFIC. A CONCRETE WEARING FLOOR MUST BE INSTALLED ON TOP OF THE WALK-IN FLOOR PANELS FOR THIS APPLICATION.

These drawings represent our understanding of the requirements of your order. We submit them to you for the purpose of securing complete approval of sizes, finishes, framing, insulation, dimensions, specifications, and interpretations. The return of these drawings to us with instructions to proceed, or subsequent instructions to that effect, shall constitute complete approval.

Approved by: _____ Date: _____

WARNING

DO NOT EXPOSE CARTONED OR STACKED PANELS TO MOISTURE OR HIGH HUMIDITY CONDITIONS DURING STORAGE. STAINING OR OXIDIZING OF METAL SKINS MAY OCCUR.

NOTICE

THIS ORDER CANNOT BE PLACED INTO PRODUCTION UNTIL WE RECEIVE FINAL APPROVED DRAWINGS AND SPECIFICATIONS. THE DATE OF RECEIPT CAN AFFECT YOUR PROMISED DELIVERY DATE.

THIS THERMO-KOOL WALK-IN WILL BE MANUFACTURED TO UL & NSF REQUIREMENTS. THERMO-KOOL ACCEPTS NO LIABILITY FOR LOCAL CODE REQUIREMENTS OF WHICH THERMO-KOOL HAS NOT BEEN MADE AWARE IN WRITING PRIOR TO FABRICATION.



USA		
SURFACE BURNING CHARACTERISTICS		
MATERIAL DETAILS	FLAME SPREAD	SMOKE DEVELOPED
ALUMINUM PANELS, PAINTED OR UNPAINTED, 5" OR LESS	15	300-400
GALVANIZED OR STAINLESS STEEL PANELS, PAINTED OR UNPAINTED, 5" OR LESS	20	450-OVER 900
CORE MATERIAL, 6" THICK	20	250

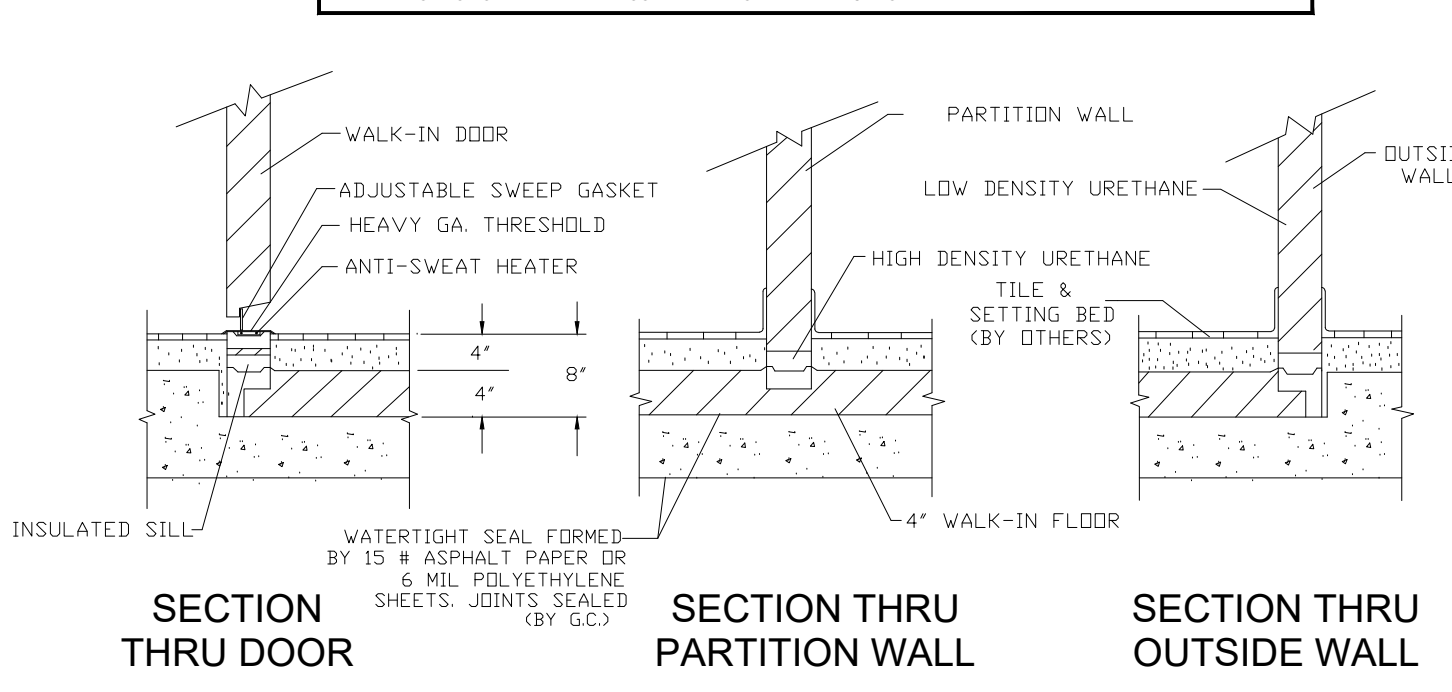
CANADA		
SURFACE BURNING CHARACTERISTICS / CARACTERISTIQUES DE COMBUSTION SUPERFICIELLE IN ACCORDANCE WITH THE STANDARD / SELON LA NORME CANULC-S102		
MATERIAL DETAILS / DETAILS DU MATERIAL	FLAME SPREAD / PROPAGATION	SMOKE DEVELOPED / DEGRADATION
ALUMINUM PANELS, PAINTED OR UNPAINTED, 127 MM (5 IN) THICK OR LESS, PAINTED OR UNPAINTED, 127 MM (5 IN) THICK OR LESS	10	105
GALVANIZED OR STAINLESS STEEL PANELS, PAINTED OR UNPAINTED, 127 MM (5 IN) THICK OR LESS, PAINTED OR UNPAINTED, 127 MM (5 IN) THICK OR LESS	5	175
CORE MATERIAL, 152 MM (6 IN) THICK OR LESS, PAINTED OR UNPAINTED, 152 MM (6 IN) THICK OR LESS	295	100

PULL DOWN RATE TO 45" F IS UNRESTRICTED. AFTER 45" F, PULL DOWN RATE SHOULD BE RESTRICTED TO 10" F PER 24 HOUR PERIOD.		
NOT APPLICABLE TO BLAST CHILLER CABINETS.		

THERMO-KOOL WALK-IN COOLERS AND FREEZERS COMPLY WITH 2021 INTERNATIONAL ENERGY CONSERVATION CODE (IECC), SECTION C403.11

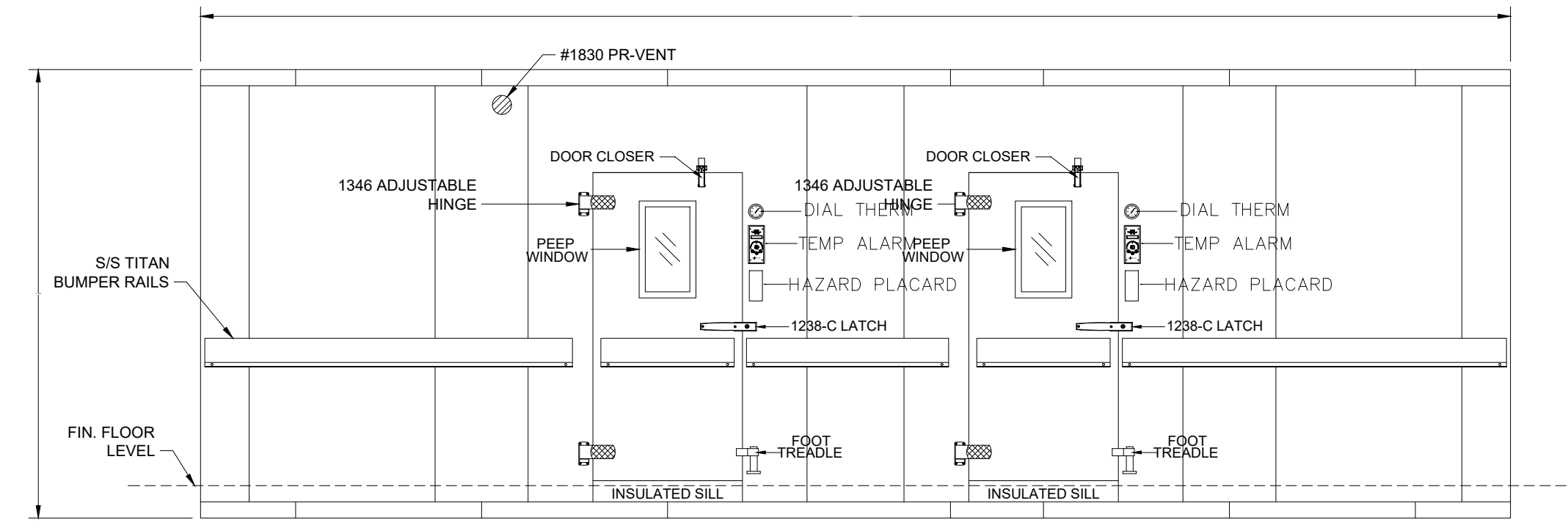
NOT APPROVED

THERMO-KOOL WALK-IN FLOOR PANELS ARE DESIGNED TO WITHSTAND UNIFORM, DISTRIBUTED STATIONARY LOADS OF 800 LBS. PER SQUARE FOOT. THERMO-KOOL'S WARRANTY DOES NOT COVER DAMAGE DUE TO PALLET JACKS, MOBILE CARTS, MOBILE SHELVING, FORK LIFTS, OR ANY OTHER FORM OF ROLLING TRAFFIC. A CONCRETE WEARING FLOOR MUST BE INSTALLED ON TOP OF THE WALK-IN FLOOR PANELS FOR THIS APPLICATION.



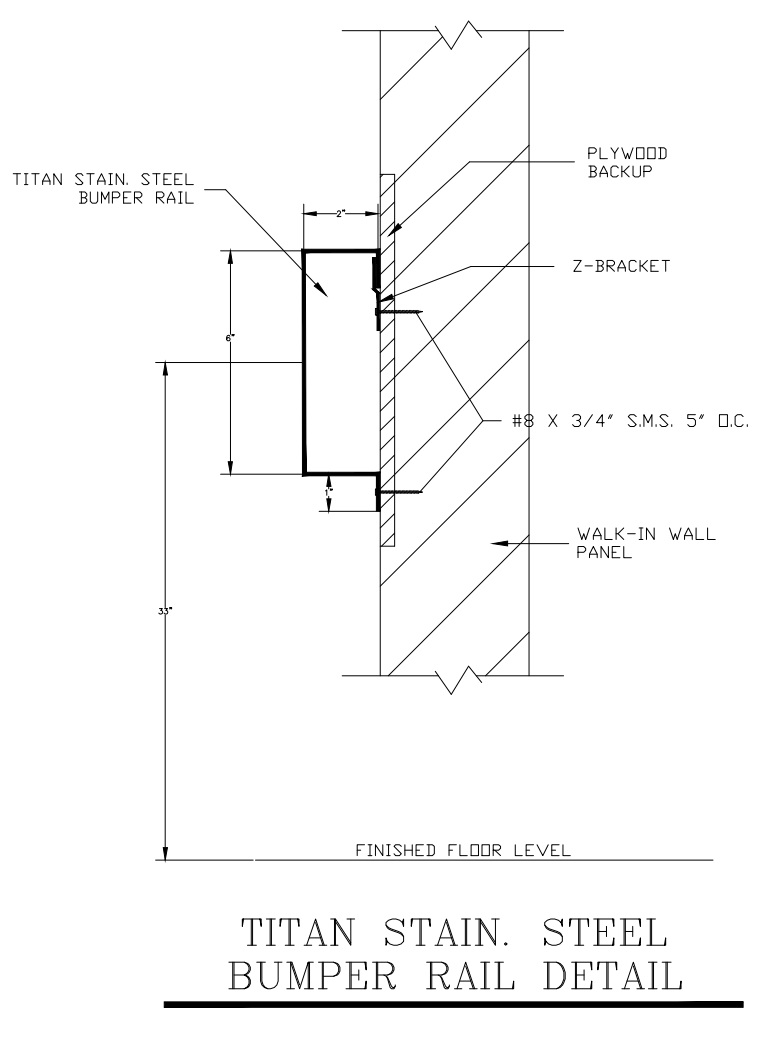
(CONSULTANT: STURM CONSULTING, INC.)

THE FOODSERVICE CONTRACTOR TO PROVIDE COMPONENT HARDWARE MODEL LED48X218V LIGHT FIXTURES WITH BULBS IN THE QUANTITY INDICATED ON THE DRAWINGS. INSTALL THE LIGHTS IN THE LOCATION INDICATED ON THE DRAWING WITH STAINLESS STEEL SCREWS.



FRONT ELEVATION

DOOR SECTION 5.5 AMPS EACH



TITAN STAIN STEEL BUMPER RAIL DETAIL

- NOTES:
- HOLES FOR SCREWS TO BE PRE-DRILLED BY FOLLOWING THE DIMENSIONS & LOCATIONS
 - OF BUMPER RAIL (SEE PIECE NUMBERS BELOW)
 - EACH PIECE TO BE NUMBERED ON THE BACKSIDE
 - FULL LENGTH Z-BRACKETS AL
 - CONSTRUCTION: 1/4 GA. SS, ALL WELDED & POLISHED.

BUMPER RAIL SCHEDULE

LENGTH	QUAN.	PIECE NUMBER
1	1	BP1
2	2	BP2
1	1	BP3
1	1	BP4

(SIZES TO BE DETERMINED ONCE JOB IS APPROVED)



ITEM # 08

DATE	REV. BY

NOTE: THIS DRAWING AND ALL DRAWINGS OR SPECIFICATIONS SUBMITTED BY THERMO-KOOL, AND REVISIONS THEREOF IN WHOLE OR IN PART SHALL REMAIN THE LEGAL PROPERTY OF THERMO-KOOL. NO PART OF THIS DRAWING OR SPECIFICATION SHALL BE REPRODUCED OR TRANSMITTED IN ANY FORM OR BY ANY MEANS, ELECTRONIC OR MECHANICAL, INCLUDING PHOTOCOPYING, RECORDING, OR BY ANY INFORMATION STORAGE AND RETRIEVAL SYSTEM, WITHOUT THE WRITTEN PERMISSION OF THERMO-KOOL.

Walk-in panels manufactured under Patent # 5,424,115.



Mid-South Industries, Inc.
1000 S. 17th Ave. P.O. Box 999
Laurie, Mississippi 38454
FAX: 601/669-0258

SUBJECT			
WALK-IN REFRIGERATION			
FOR			
MEMORIAL HIGH SCHOOL			
TULSA, OK			
DR BY	CH BY	DWG NO.	
JL		Q38450	
DATE	SCALE	SHEET NO.	
07/06/2022	3/8"=1'-0"	1 OF 1	

NOTES: Aircooled condensing units should be placed in a well ventilated area with a minimum of 1000 CFM per unit. Condensate drain connections by others. NOTE: THERMO-KOOL recommends a 1" min. clearance between walk-in & building walls.

REVISIONS DESCRIPTION

DATE	REV.	DESCRIPTION

REVISIONS DESCRIPTION

DATE	REV.	DESCRIPTION

REVISIONS DESCRIPTION

DATE	REV.	DESCRIPTION

REVISIONS DESCRIPTION

DATE	REV.	DESCRIPTION

REVISIONS DESCRIPTION

DATE	REV.	DESCRIPTION

REVISIONS DESCRIPTION

DATE	REV.	DESCRIPTION

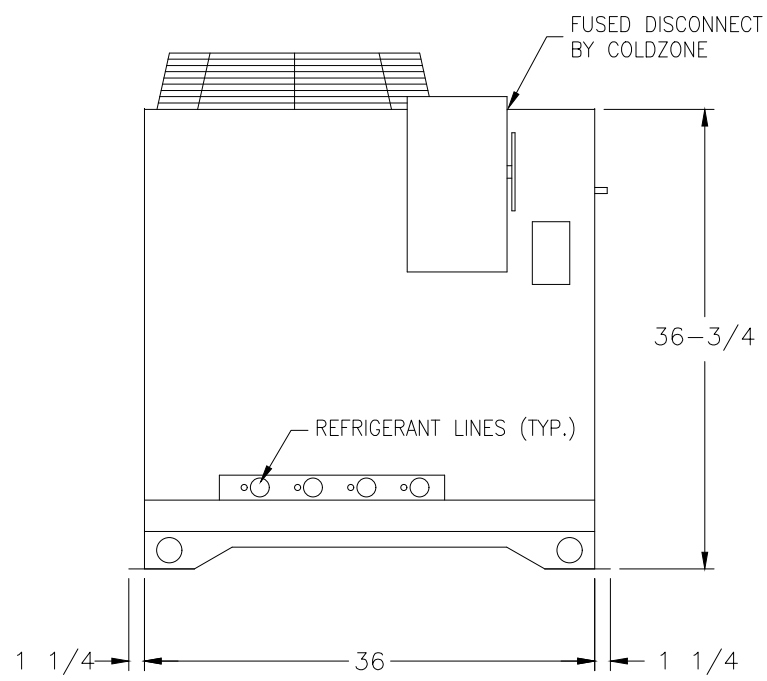
A REFRIGERATION RACK OUTLINE DRAWING
R-1 MINI-PAK MODEL: MPL-2

NOTES:

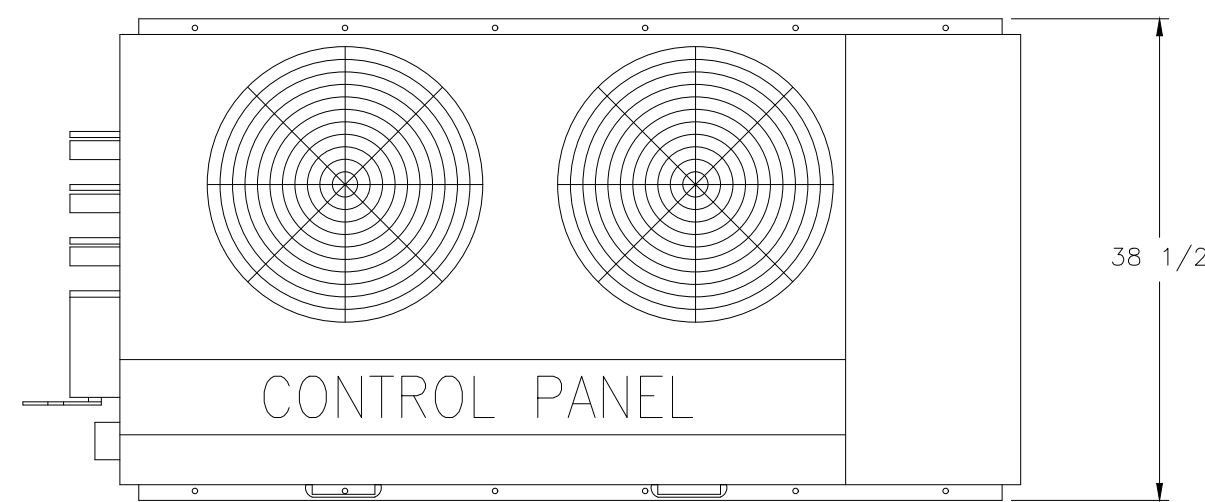
1. UNIT WEIGHT 635 LBS.
2. INSTALLATION CLEARANCE REQUIRES 3 FT. ON ALL SIDES.

REFRIGERANT LINE SEQUENCE FACING UNIT

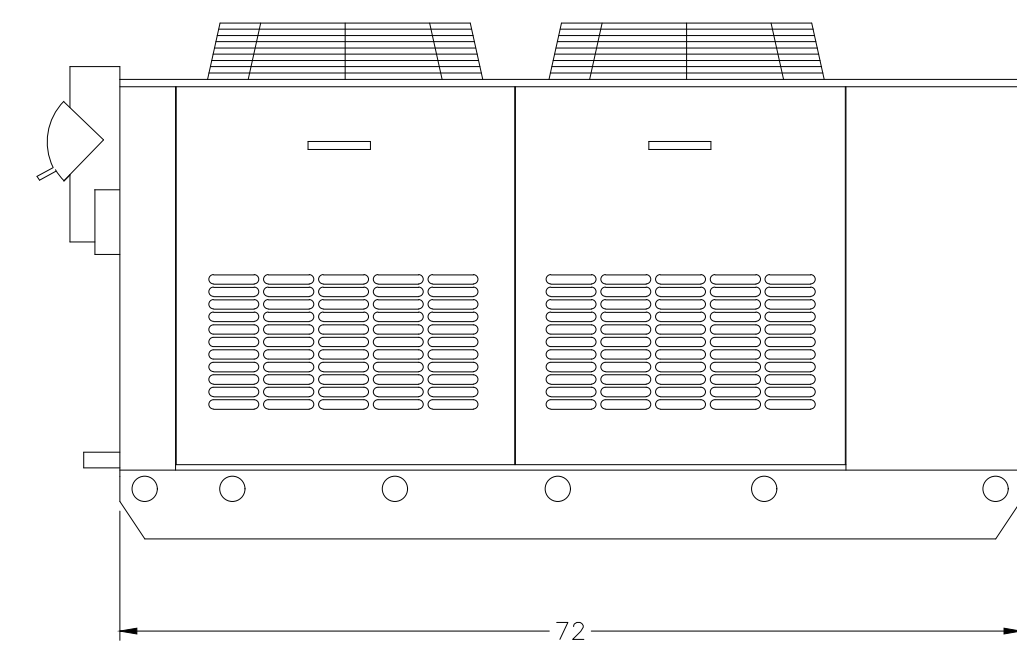
A B



LEFT SIDE VIEW

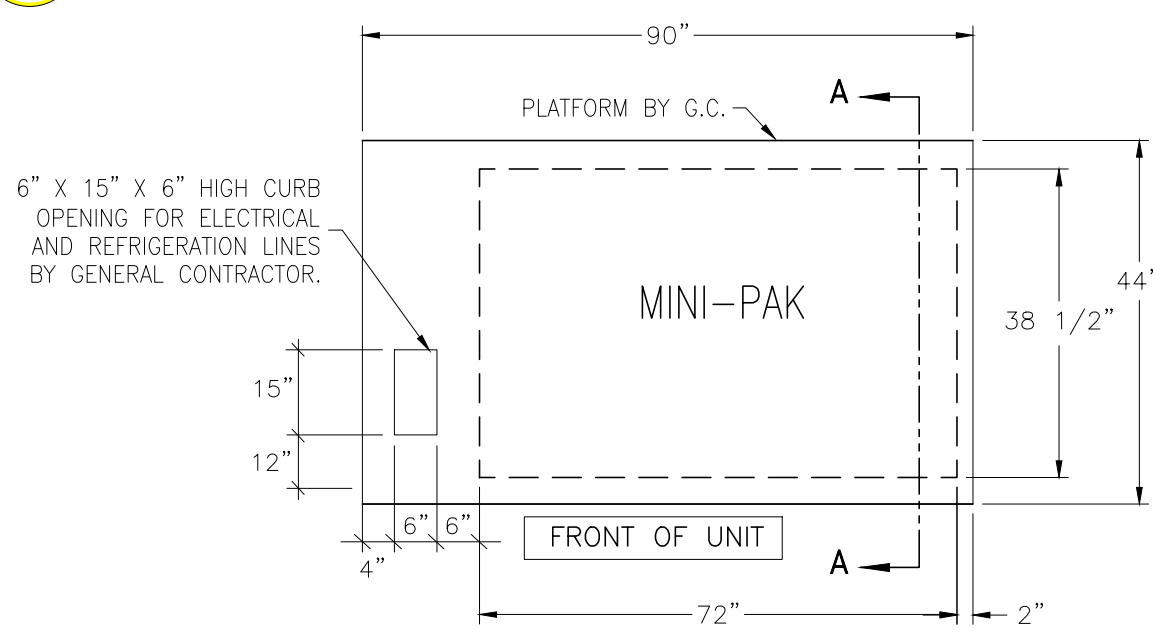


TOP VIEW



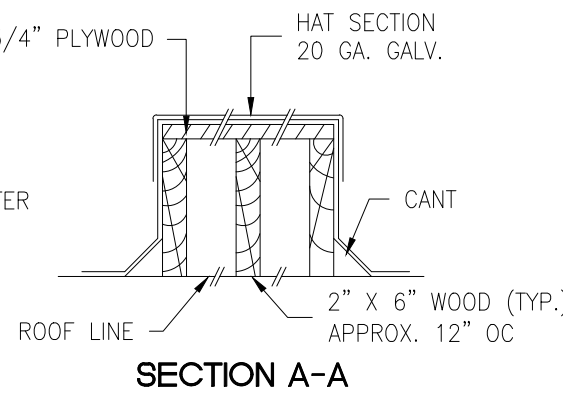
FRONT VIEW

B SUGGESTED ROOF PAD DETAIL
R-1



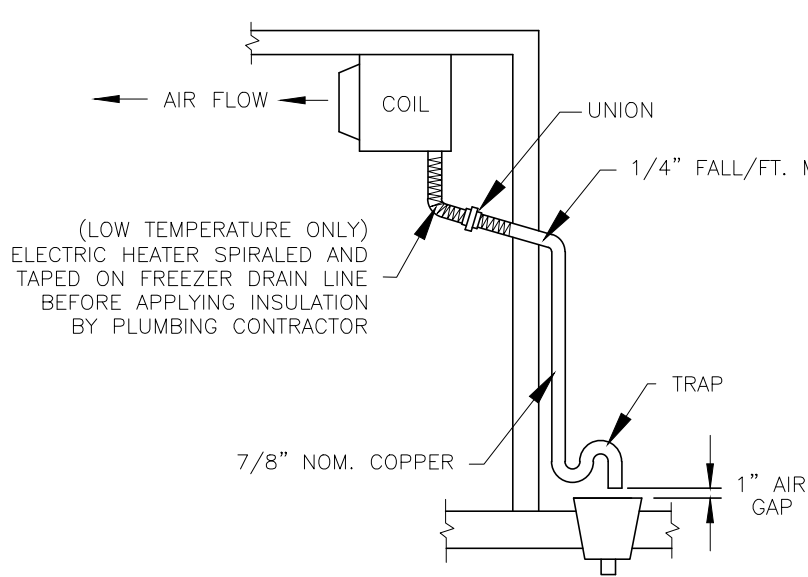
G.C. NOTES:

- 1-PLATFORM TO BE INSTALLED LEVEL.
- 2-PROVIDE SHEETMETAL HAT SECTION WITH WATER TIGHT SOLDERED JOINTS.
- 3-BACK FILL OPENING WITH HOT PITCH AFTER INSTALLATION.

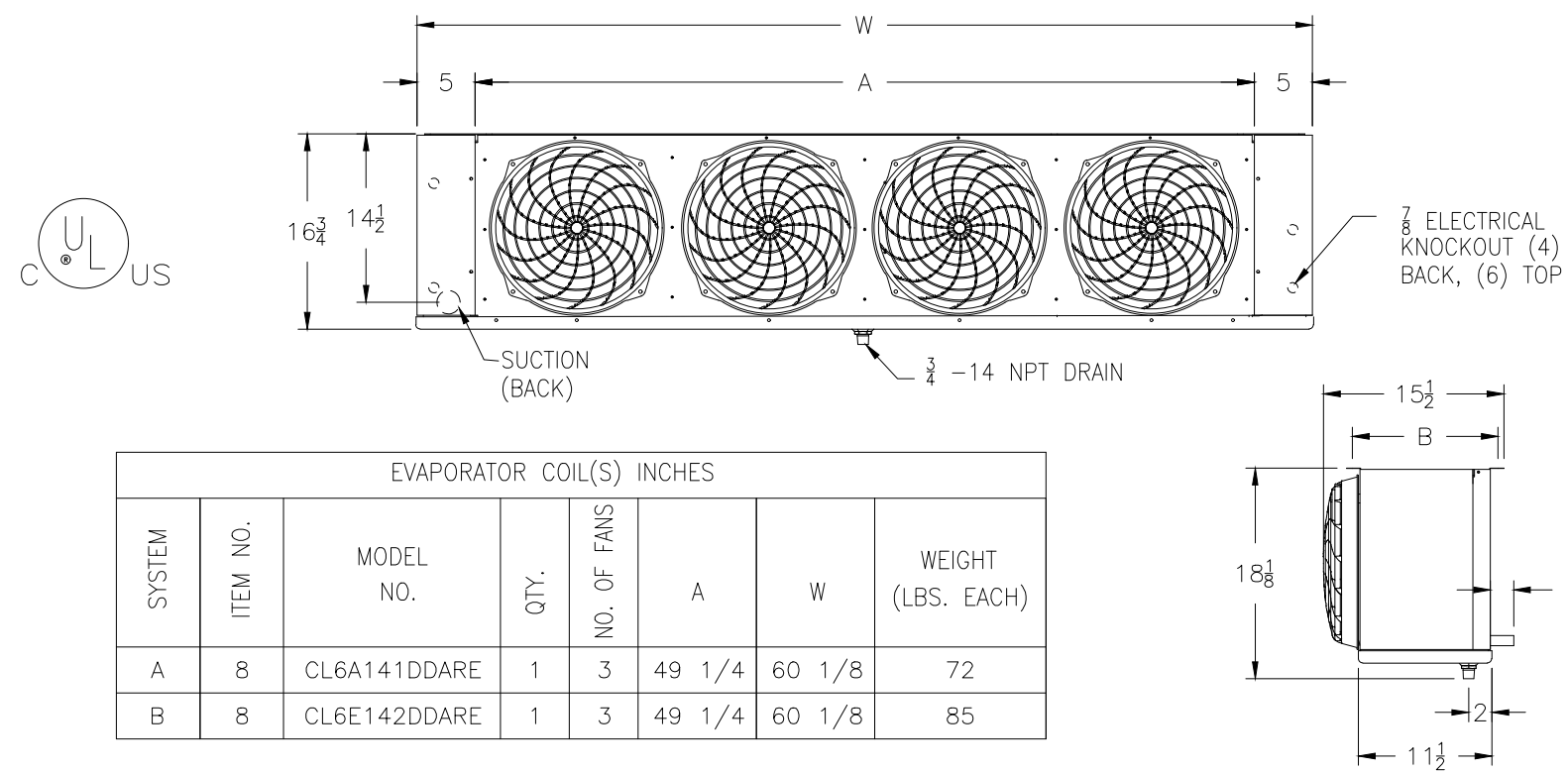


SECTION A-A

C DRAIN LINE DETAIL
R-1

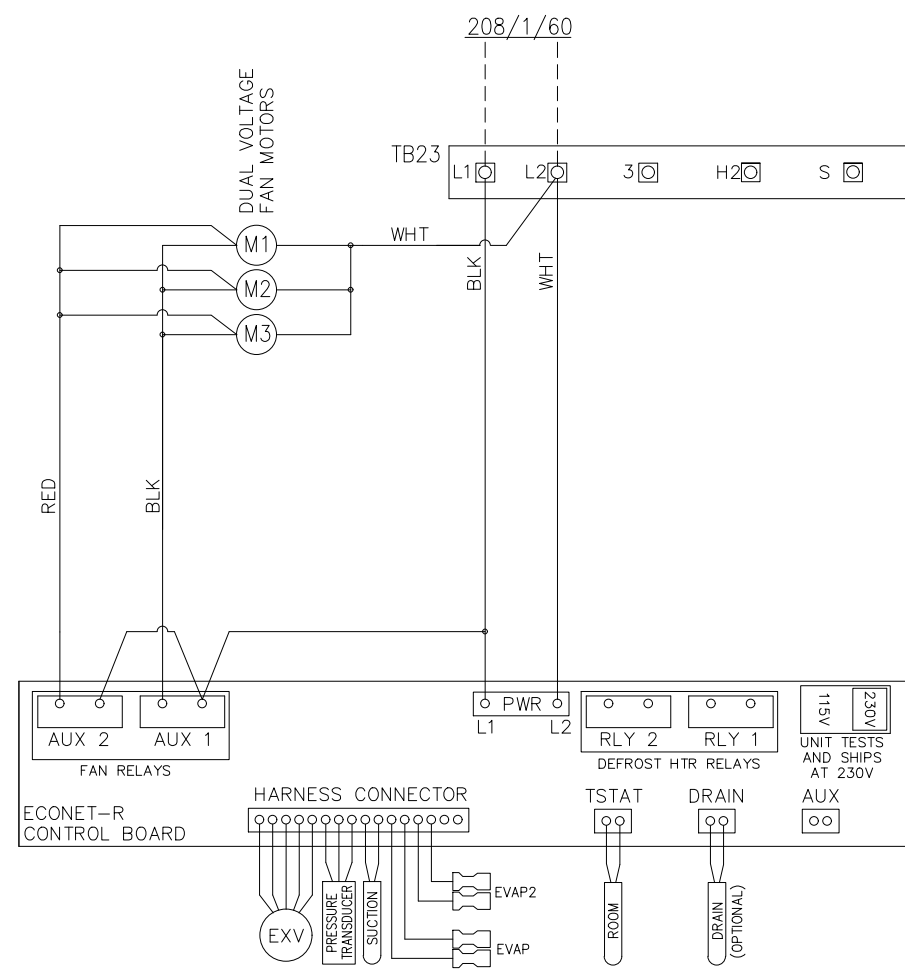


D COLDZONE EVAPORATOR COILS
R-1 LOW PROFILE



SYSTEM	ITEM NO.	MODEL NO.	QTY.	NO. OF FANS	A	W	WEIGHT (LBS. EACH)
A	8	CL6A141DDARE	1	3	49 1/4	60 1/8	72
B	8	CL6E142DDARE	1	3	49 1/4	60 1/8	85

E AIR DEFROST WIRING DIAGRAM
R-1 ECONET

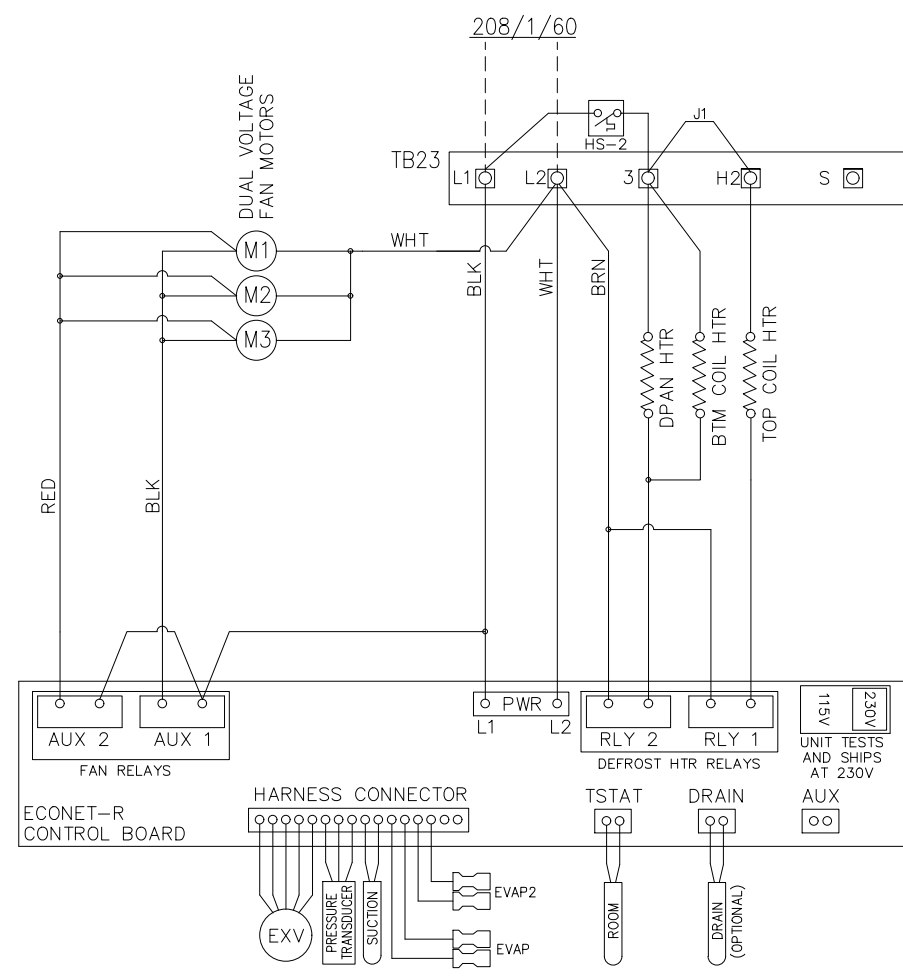


NOTES:

1. USE COPPER CONDUCTORS ONLY
2. UNIT MUST BE GROUNDED
3. FOR MOTOR AND HEATER AMPS SEE RATING STUDER ON OUTSIDE OF UNIT
4. AMPERS ARE 16 GA. UNLESS OTHERWISE SPECIFIED

LEGEND:
TB - TERMINAL BOARD
HTR - HEATER
M - MOTOR
EVP - ELECTRIC EXPANSION VALVE
R1 - RELAY

F ELECTRIC DEFROST WIRING DIAGRAM
R-1 ECONET



NOTES:

1. USE COPPER CONDUCTORS ONLY
2. UNIT MUST BE GROUNDED
3. FOR MOTOR AND HEATER AMPS SEE RATING STUDER ON OUTSIDE OF UNIT
4. AMPERS ARE 16 GA. UNLESS OTHERWISE SPECIFIED

LEGEND:
TB - TERMINAL BOARD
HTR - HEATER
M - MOTOR
EVP - ELECTRIC EXPANSION VALVE
R1 - RELAY

COLDZONE ENGINEERING SUMMARY

IDENT		FIXTURES				COMPRESSORS							EVAPORATOR COILS										LINE SIZES **		ACCESSORIES						
SYSTEM	ITEM	DESCRIPTION		FIXT:'F		REFRIG. R.	MODEL NO.	H.P.	ELECTRICAL CHARACTERISTIC AT 60 HZ			MBH. AT 100°F	DEFROST *	QUANTITY	MODEL NO.	MFR.		FAN 1PH		HEATER		TOTAL UNIT AMP [10A]			ROUTE +	SUCTION	LIQUID	DEFROST OPTION NO.	CRANKCASE HEATER	HEAD PRESSURE CONTROL	IS/AT
				FIXTURE	SUCTION				RLA	V	PH						REMARKS	AMP	V	AMP	V	PH									
A	8	W/I COOLER	35	25	44BA	ZS15KAE	2.0	9.6	208	3	16.7	T	1	CL6A141DDARE	COLDZONE	1.5	208						9.6	S	7/8	1/2	ECONET	FI	FI		FI
B	8	W/I FREEZER	-10	-20	44BA	ZF15KAE	5.0	17.0	208	3	16.3	E	1	CL6E142DDARE	COLDZONE	2.0	208	14.3	208	3			17.0	S	1 3/8	1/2	ECONET	FI	FI		FI
MAIN-PAK RACK		(2) CONDENSER FAN MOTOR					0.75	3.4	208	3													6.8								
RACK NO.		LEGEND	T-AIR DEFROST G-GRAVITY(W/TIMER)										+ S-SINGLE M-MAIN B-BRANCH ** VERIFY LINE SIZES WITH JOB SITE CONDITIONS										MFR- FURNISH WITH FIXTURE FL- C2 TO FURNISH AND SHIP LOOSE FI- C2 TO FURNISH AND INSTALL ON UNIT RC- FURNISH AND INSTALL BY REF. CONTRACTOR								
			E- ELECTRIC DEFROST E'-DEFROST CLOCK BY FIXTURE MFR.																												

NOTES:

- EACH COMPRESSOR SYSTEM IS SUPPLIED WITH A CRANKCASE HEATER AND HEAD PRESSURE CONTROL
- REFRIGERATION SYSTEM INCLUDES A MAIN-FUSED DISCONNECT SWITCH
- ALL EVAPORATOR COILS WILL REQUIRE POWER FROM A HOUSE CIRCUIT
- EVAPORATOR FAN MOTORS ARE PROVIDED WITH HIGH EFFICIENCY EC MOTORS
- REFRIGERATION SYSTEM SUPPLIED WITH ENHANCED CORE TUBE CONDENSER
- LIQUID LINE KIT WITH SEALED FILTER/DRIER AND SIGHT GLASS WITH MOISTURE INDICATOR
- ALL COMPRESSORS AND CONDENSER CIRCUITS ARE SIZED TO OPERATE AT 100°F AMBIENT
- PIPE SIZES ARE BASED ON A MAXIMUM LINE RUN OF 100 EQUIVALENT FEET (INCLUDES 45 FT. RISER)

ENGINEERING GUIDE TO SPECIFICATION
MINI-PAK REFRIGERATION SYSTEM

THE REFRIGERATION PACKAGE SHALL BE A PRE-ENGINEERED AND FACTORY ASSEMBLED UNIT, TRADE NAME "MINI-PAK", AS MANUFACTURED BY COLDZONE, A DIVISION OF HEAT TRANSFER PRODUCTS GROUP, 1933 VINEYARD AVE. ONTARIO, CA 91761. PHONE: (909) 786-3656, FAX: (714) 529-8503.

CONTRACTOR SHALL FURNISH AND INSTALL, WHERE SHOWN ON PLANS, (1) COLDZONE U.L. APPROVED "MINI-PAK"

- MINI-PAK REFRIGERATION SYSTEM
THE ENTIRE UNIT IS TO BE WEATHER-PROOFED AND MINIMUM OF TWO COATS OF PAINT SHALL BE APPLIED TO MAKE THE UNIT RUST-PROOF. THE UNIT SHALL BE PROVIDED WITH MULTI-CIRCUITED AIR-COOLED CONDENSER FOR COOLER, FREEZER AND ICE MACHINES. SUCTION LINE FOR LOW TEMPERATURE UNIT MUST BE INSULATED WITH ARMAFLEX.
- REFRIGERATION UNITS
A. CRANKCASE HEATER SHALL BE PROVIDED WITH EVERY COMPRESSOR.
B. AIR-COOLED CONDENSING UNITS SHALL BE SEMI-HERMETIC, HERMETIC OR GLACIER SCROLL TYPE (COPELAND). EACH UNIT SHALL BE EQUIPPED WITH HIGH-LOW PRESSURE CONTROL, LIQUID LINE DRIER, SIGHT GLASS, SUCTION AND DISCHARGE VIBRATION ELIMINATOR, AND HEAD PRESSURE CONTROL.
C. ALL COMPRESSOR UNITS SHALL BE NEW AND FACTORY ASSEMBLED TO OPERATE WITH THE REFRIGERANT SPECIFIED IN THE ENGINEERING SUMMARY SHEET.
- PRE-PIPING
A. ALL COPPER TUBING TO BE REFRIGERANT GRADE A.C.R. OR TYPE "L".
B. ALL TUBING SHALL BE SECURELY SUPPORTED AND ANCHORED WITH CLAMPS.
C. ALL REFRIGERANT LINES SHALL BE EXTENDED TO ONE SIDE OF THE PACKAGE IN A NEAT AND ORDERLY MANNER.
D. SILVER SOLDER AND/OR SIL-FDS SHALL BE USED FOR ALL REFRIGERANT PIPING. SOFT SOLDER IS NOT ACCEPTABLE.
E. ALL PIPING TO BE PRESSURE TESTED WITH NITROGEN AT 300 PSI. AFTER THE CONDENSING UNIT AND COIL HAVE BEEN CONNECTED, THE BALANCE OF THE SYSTEM SHALL BE LEAK TESTED WITH ALL VALVES OPEN.
- CONTROL PANEL
A. THE PACKAGE SHALL HAVE FACTORY MOUNTED AND PRE-WIRED CONTROL PANEL COMPLETE WITH INTERLOCKED MAIN FUSED DISCONNECT, COMPRESSOR CIRCUIT BREAKERS, CONTACTORS AND TIME CLOCKS WIRED FOR SINGLE POINT POWER CONNECTION.
B. ELECTRICAL CONTRACTOR SHALL PROVIDE AND INSTALL MAIN POWER LINES TO PANEL, AND USE WIRE HARNESS WIRING FOR CONTROL AND DEFROST HEATER BETWEEN THE DEFROST CLOCK AND THE REFRIGERATION FIXTURES, ALL IN ACCORDANCE WITH THE WIRING DIAGRAM AND LOCAL CODES.

GENERAL NOTES

- GENERAL CONTRACTOR
A. CONTRACTORS SHALL VERIFY ALL DIMENSIONS AND COORDINATE WITH OTHER TRADES.
B. GENERAL CONTRACTOR SHALL PREPARE AND WEATHERPROOFING THE PLATFORM AND CURBED OPENINGS.
- REFRIGERATION CONTRACTOR
A. THE COMPLETE SYSTEM SHALL BE EVACUATED WITH VACUUM PUMP.
B. ALL COPPER TUBING TO BE REFRIGERANT GRADE A.C.R. OR TYPE "L".
C. CHARGE, TEST AND ADJUST EACH UNIT TO BE IN AN OPERATIONAL SYSTEM.
D. SILVER SOLDER AND/OR SIL-FDS SHALL BE USED FOR ALL REFRIGERANT PIPING. SOFT SOLDER IS NOT ACCEPTABLE.
E. ALL PIPING TO BE PRESSURE TESTED WITH NITROGEN AT 300 PSI. AFTER THE CONDENSING UNIT AND COIL HAVE BEEN CONNECTED, THE BALANCE OF THE SYSTEM SHALL BE LEAK TESTED WITH ALL VALVES OPEN.
F. REFRIGERATION CONTRACTOR TO PROVIDE AND INSTALL DRAIN LINE HEATER IN FREEZER TO BE CONNECTED BY ELECTRICAL CONTRACTOR
- ELECTRICAL CONTRACTOR
A. ELECTRICAL CONTRACTOR TO PROVIDE POWER FROM REFRIGERATION PACKAGE AND CONNECT CONTROL AND DEFROST SYSTEM AS CALLED FOR IN THE WIRING DIAGRAM.
B. ALL ELECTRICAL WIRING AND INSTALLATION SHALL BE IN ACCORDANCE WITH THE WIRING DIAGRAM AND LOCAL CODES.
- PLUMBING CONTRACTOR
A. PLUMBING CONTRACTOR TO PROVIDE HARD A.C.R. OR TYPE "L" COPPER DRAIN LINES FOR WALK-IN REFRIGERATOR AND FREEZER, PITCHED 1/4" PER FOOT OF RUN. IN FREEZER, UNHEATED DRAIN LINE MUST BE OUTSIDE OF FREEZER WALL TO PREVENT FREEZING. TRAP DRAIN LINE OUTSIDE OF REFRIGERATED SPACE TO AVOID ENTRANCE OF WARM AND MOIST AIR.
B. PLUMBING CONTRACTOR TO PROVIDE INDIVIDUAL DRAIN LINE FOR EACH EVAPORATOR UNLESS OTHERWISE CALLED FOR.
C. ALL PLUMBING INSTALLATION SHALL BE IN ACCORDANCE WITH LOCAL CODES.

master dwg revised 18AUG17 (RG)

THE INFORMATION DISCLOSED HEREIN WAS ORIGINATED BY AND IS THE PROPERTY OF COLDZONE AND EXCEPT FOR RIGHTS EXPRESSLY GRANTED TO THE CUSTOMER, COLDZONE RESERVES ALL PATENT, PROPERTY, DESIGN, USE, SALE, MANUFACTURING AND REPRODUCTION RIGHTS THERE TO.

GENERAL NOTES

REFRIGERATION PIPE SIZES ARE BASED ON A MAXIMUM LINE RUN OF 100 EQUIVALENT FEET FOR LIQUID AND SUCTION LINES. THIS INCLUDES AN ALLOWANCE OF 45 EQUIVALENT FEET FOR VERTICAL RISERS. LINE RUNS LONGER THAN 100 EQUIVALENT FEET MAY VOID THE LINE SIZES INDICATED ON OUR SUBMITTAL DRAWING

IT IS THE INSTALLING CONTRACTORS RESPONSIBILITY TO FOLLOW ALL APPLICABLE CODES AND CURRENT REFRIGERATION INDUSTRY STANDARDS AND PRACTICES WHEN DETERMINING LINE SIZES, AND INSTALLING AND STARTING UP COLDZONE EQUIPMENT

EVAPORATOR AND PIPING SERVICE / ISOLATION VALVES ARE RECOMMENDED FOR PARALLEL AND MULTIPLEX SYSTEMS. THESE VALVES ARE TO BE SUPPLIED AND INSTALLED BY THE INSTALLING CONTRACTOR

REV	DESCRIPTION	DATE
0	INITIAL RELEASE	7/25/22



Project Name and Address
PROJECTLINE1
PROJECTLINE2
PROJECTLINE3
TOWN,STATE
NOT DRAWN TO SCALE

DWGNUMBER	JOB#
DATE	SHEET NUMBER
DATEDRAWN	SHEET
DRAWN BY	22-1153

XLSELENO

SECTION 11 40 00

KITCHEN EQUIPMENT

PART 1 – GENERAL

1.01 SCOPE

- A. Include the work specified, shown or reasonably inferred as part of the foodservice equipment. Portions of the work may be subcontracted to those qualified to do the work as required by jurisdictional trade agreements and restrictions.
- B. Kitchen equipment furnished and installed by the Foodservice Contractor In the base bid.
- C. Provide itemized pricing providing both each pricing and total pricing for every item specified with a bid grand total.

1.02 RELATED SECTIONS

- A. Division 15 – Mechanical rough-ins, inter-connections of the equipment as required and final connections.
- B. Division 16 – Electrical rough-ins, inter-connections of the equipment as required and final connections.

1.03 QUALITY ASSURANCE

- A. All equipment and associated work must comply with all applicable laws, statutes, building codes and regulations of public authorities and comply with the following:
 - a. NSF (National Sanitation Foundation). All the equipment must bear the NSF label.
 - b. NEC (National electric Code).
 - c. UL (Underwriter's Laboratories, Inc.).
 - d. AGA (American Gas Association Laboratories).
 - e. NFPA (National Fire Protection Association).
- B. The following are approved fabricators for providing the fabricated food service equipment:

Jero Manufacturing, Inc.
5117 South 100th East Avenue
Tulsa, Oklahoma 74115

Stainless Innovations
1110 Carnall
Fort Smith, Arkansas 72901

1.04 SUBSTITUTIONS

- A. Equipment items and the components specified are intended to be the basis of the bid. All other manufactures, including manufactures which may be listed as "alternates" or "approved equals" must conform with the specifications, size, accessories, etc. of the original manufacture specified.
- B. Proposed substitutions will be substituted no later then fourteen (14) days prior to the bid date. Submit the proposed substitutions with the manufactures specification or catalog

sheets, shop drawings, etc. indicating all modifications required to conform to the specified items.

- C. Approved substitutions will be addressed in an addendum(s). Approved substitutions will be noted on the bid form as a substitution. All costs and fees for any design and engineering services required to make adjustments to the space, systems, utilities, etc. will be the responsibility of the successful bidder. All costs incurred for modifications of the utilities or construction or professional services will be the responsibility of the successful bidder.
- D. The Owner reserves the right to accept or reject any or all of the substitutions proposed before the execution of the contract.

1.05 DOCUMENT INTERPERTATION

- A. An addendum(s) will be issued addressing questions and comments from contractors, suppliers or vendors pertaining to the intent or clarity of the construction documents.
- B. All questions and comments will be submitted in writing by the contractors, suppliers and vendors for review.

1.06 SUBMITTALS

- A. Submit brochure books, rough-in drawings, fabrication shop drawings and manufactures shop drawings. Refer to the general specifications for the required quantities.
 - a. Brochures:
 - 01 Provide with a front and rear cover. Label the front cover with the project name.
 - 02 Provide a cover sheet for each item number. The cover sheet will indicate the item number, the item name, the quantity, the manufacture, all optional equipment and accessories, specified modifications, the utility requirements and any special instructions.
 - 03 The manufactures catalog specification sheets.
 - b. Submittal drawings:
 - 01 Indicate all equipment shown on the contract documents drawn at a 1/4" scale.
 - 02 The contract documents are not to be traced or reproduced.
 - 03 Provide an equipment schedule indicating all the equipment shown on the contract documents.
 - 04 Drawings to be submitted on the same size drawing sheet as the Contract Documents in a PDF format. Provide the necessary required hard copies of the reviewed/stamped document to the General Contractor. Submit the drawings separately from the Brochure Book.
 - c. Rough-in drawings:
 - 01 Indicate all equipment shown on the contract documents drawn at a 1/4" scale.
 - 02 indicate all general use and convenience utilities indicated on the contract documents.
 - 03 Include utilities shown on the contract documents but connected to equipment not furnished in this section.
 - 04 Fully dimension all the utilities for the plumbing, electrical and mechanical from the finished room surface to the point of the stub-up through the floor and the stub-out through the wall or ceiling.

05 Drawings to be submitted on the same size drawing sheet as the Contract Documents in a PDF format. Provide the necessary required hard copies of the reviewed/stamped document to the General Contractor. Submit the drawings separately from the Brochure Book.

d. Manufacture's and fabricators shop drawings:

- 01 Indicate all equipment shown on the contract documents drawn at a 3/4" scale for the plan views and elevations. All sections and details to be drawn at a minimum of 1 1/2" scale.
- 02 Include the equipment name, the item number and the quantity on the drawings.
- 03 Include all required and necessary sections, details and elevations to reflect the drawings and the specifications.
- 04 Indicate all adjacent equipment, walls and columns.
- 05 Include all necessary plumbing and electrical schematic drawings.
- 06 Include any ventilation or access panels as required by the manufactures of the built-in equipment.
- 07 Drawings to be submitted on the same size drawing sheet as the Contract Documents in a PDF format. Provide the necessary required hard copies of the reviewed/stamped document to the General Contractor. Submit the drawings separately from the Brochure Book.

1.07 COORDINATION OF THE PROJECT AND DATA

- A. Review the contract documents, rough-in drawings, shop drawings and brochure books for accuracy and completeness.
- a. Notify the Architect of any conflicts and required adjustments in writing.
 - b. Coordinate the work with this section with the other sub-contractors on the job.
 - c. Submit paint, stain, plastic laminate, vinyl coated surfaces, molded plastic, natural stone, man-made stone and solid surface material to the Owner for approval.
 - d. Obtain serveware samples for sizing and weight information from the Owner for coordination of all self-leveling equipment.
 - e. Coordinate all mobile equipment will go through doors, wall openings and roll-in/roll-thru equipment. Notify the Architect of all conflicts or deviations from the approved submittals in writing.

1.08 FIELD VERIFICATION OF THE PROJECT AND DATA

- A. Review the contract documents, rough-in drawings, shop drawings and brochure books for accuracy and completeness.
- a. Field verify all the under-slab rough-in locations and quantities before the concrete slab is poured. Notify the Architect in writing of all conflicts or omissions of the rough-ins.
 - b. Field verify all the in-slab recess locations, sixes, depths and quantities before the concrete slab is poured. Notify the Architect in writing of all conflicts or omissions of the in-slab recess.
 - c. Field verify all the in-wall rough-in locations and quantities before the drywall is installed. Notify the Architect in writing of all conflicts or omissions of the rough-ins.
 - d. Obtain actual field dimensions or guaranteed measurements from the general contractor to insure the proper fit of the equipment at the job site. The dimensions shown in the contract documents are approximate. The dimensions are for the bidding process only.

- e. Field check all dimensions, measurements job site conditions before the fabrication and/or delivery of equipment to the job site. Notify the Architect of all conflicts or deviations from the approved submittals in writing.
- f. Coordinate any exterior wall openings required for the delivery of all oversized equipment with the general contractor. The equipment must be manufactured to fit through standard door openings if this cannot be done.

1.09 WARRANTY

- A. Provide manufacture's warranty on each piece of specified equipment.
- B. The warranty period will be for one year after acceptance from the Owner for parts and labor.
- C. The warranty period will be for five years after acceptance from the Owner for compressor bodies for refrigeration equipment.
- D. The warranty period will be for ten years after acceptance from the Owner for the walk-in panels.

PART 2 – PRODUCTS

2.01 MATERIALS

- A. Stainless steel.
 - a. All stainless steel to 18-8, type 304, polished to a 180 grit number 4 finish unless noted otherwise in the item specifications or in the drawings.
 - b. All seams and joints are to be heli-arc welded completely and free of flaws and pits. Grind the welds smooth and polish to a number 4 finish.
 - c. The grain of the stainless steel is to run the length of the equipment including the backsplash. Provide a polished miter look where the tops form a corner.
- B. Galvanized iron.
 - a. All seams and joints are to be heli-arc welded completely and free of flaws and pits. Grind the welds.
 - b. Thoroughly clean the welded and polished areas and prime and paint with Rustoleum in a color to match the metal.
- C. Sound deadening.
 - a. Apply 1/2" wide Schnee Butyl sealant rope continuously between all bracing/frame members and the underside of the table/counter tops, overshelves, wall shelves and undershelves.
 - b. Weld stud bolts to the underside of the tops, overshelves, wall shelves and undershelves. Tighten the stud bolts for maximum compression of the sound deadening. Trim any excess that extends from out of the bracing.
- D. Shop and field joints.
 - a. Field joints are to be used only when the equipment size must be limited for access into the building.
 - b. Indicate the field joint locations on the shop drawings.

PART 3 – EXECUTION

3.01 INSPECTION

- A. Verify and test that all equipment is plumbed, wired correctly, true and in good working order. Do not use until turned over to the Owner.
- B. Protect all appliances from construction dirt until the project is turned over to the Owner.

3.02 DELIVERY

- A. Coordinate with the construction progress and the Owner's operation schedule. Unless otherwise instructed by the general contractor or the Owner, the following procedures apply.
 - a. Items that integrate into the building, such as, walk-in coolers and freezers, ventilators, hoods, equipment supports, ceiling mounted utensil racks, etc. will be sent to the job site after the building is water tight and directed by the general contractor. Protect the equipment as required after installation is complete.
 - b. All the additional fixed equipment and mobile equipment requiring plumbing and electrical final connections will be delivered to the job site after the completion of the finished floor, wall finish, ceiling grid and tile or drywall and paint and the lighting system.
 - c. The remaining mobile equipment will be delivered to the job site after the equipment can be inventoried and secured in a lockable area. If a secured area is not available, deliver the equipment when the job site when the installation is completed and the equipment clean-up process have been completed.
 - d. Small counter item, pans, flatware containers, etc. will be delivered only when the Owner is ready to receive and inventory the items.

3.03 INSTALLATION

- A. Provide a competent supervisor at the job site during the entire installation process.
- B. Install the equipment per the manufacture's recommendations. Install the equipment square and level. All equipment shall be ready for the final connections.
- C. Protect the equipment after the installation process is complete.
 - a. Protect the custom fabricated equipment with fiberboard or plywood taped to the tops and exposed body surfaces.
 - b. Protect the buy-out equipment with fiberboard or plywood taped to the tops and exposed body surfaces.
 - c. The general contractor must insure the equipment is not used by other sub-contractors as work tables, scaffolding, tool and material storage, etc.
- D. Provide and install 18 gauge stainless steel trim at all gaps between the equipment and the walls and/or other high equipment when the gap is larger than 7/16 of an inch wide. Turn the trim down 90 degrees at the equipment splashes, top and/or turn downs. Attach the trim with hidden fasteners and seal with silicone caulking.

3.04 CLEAN AND ADJUST

- A. Leave the work area clean and free of debris.
- B. Remove or replace panels, parts or frames that are bowed, warped, dented or scratched as a result of manufacturing defects, shipping and delivery to the job site.

- C. The Foodservice Contractor is to deliver the foodservice equipment to the job site, uncrate the equipment, remove all packing materials from the equipment, set the equipment into place per the floor plan and the job site conditions, level the equipment and make ready for final connection by the Mechanical, Plumbing and/or Electrical Contractor. All crating materials are to be removed from the job site by the Foodservice Contractor.
- D. The Foodservice Contractor will final clean (not sanitizing) the foodservice equipment and seal the fixed foodservice equipment to the adjacent walls and/or fixed equipment with silicone caulking after all the utilities have been connected. The caulking will be neat, smooth and level with the foodservice equipment. Concave caulking will be rejected. Remove any smeared caulking from the foodservice equipment and adjacent surfaces.

3.05 SERVICE MANUAL

- A. Provide manufacturer's warranties and operating manuals on all appliances over to the Owner.
- B. Each appliance shall have operating instructions and maintenance information.
- C. The Foodservice Contractor will furnish to the Owner three (3) copies of an owner's and operations manual. The manual will be in three ring binders. The manuals will include a cover sheet for each equipment item, warranty information sheets, manufacturer's specification sheets and the service agent's name, address and telephone number.
- D. All warranties are not to begin until after the Owner accepts successful completion of the Start-up Demonstration and the kitchen.

3.06 EQUIPMENT DEMO AND START UP

- A. The Foodservice Contractor must test, adjust and regulate all the equipment per the manufacturer's instructions.
- B. The Foodservice Contractor will schedule, at the Owner's convenience, a date and time to demonstrate the foodservice equipment to the Owner. The Foodservice Contractor will start up and check out the foodservice equipment before the equipment is demonstrated to the Owner.

PART 4 – EQUIPMENT

ITEM NO. 01 - AIR CURTAIN (1 REQUIRED)

Mars Air Systems model N242-1UA-SS with all the standard features. Mount with stainless screws per the manufacturer's requirements.

Accessories

- 1 ea. 120 volts, single phase with a cord and plug.
- 1 ea. Model 99-014 level 1 control package.
- 1 lot Model J2142 filter kit.

ITEM NO. 02 - LOCKERS (2 REQUIRED)

Winholt Equipment model WL-66 with all the standard features. Mount to the wall with stainless screws.

Accessories

- 2 ea. Component Hardware Group model J53-0125 oblong base end flange. Mount to the walls and lockers in the location shown on the drawings with stainless steel screws per the manufactures requirements. Remove the exposed screw threads inside the lockers.
- 1 ea. Provide a 1" diameter by the length shown on the drawings stainless steel tubular coat hanger rod. Set the rod in the flanges.

ITEM NO. 03 - DRYER BY THE OWNER

ITEM NO. 04 - WASHER BY THE OWNER

ITEM NO. 05 - MOP SINK BY THE PLUMBING CONTRACTOR

ITEM NO. 06 - CHEMICAL STORAGE SHELVING (1 LOT REQUIRED)

Eagle Group model Quad TRUSS chemical storage shelves. Locate the bottom shelf at 10" above the finish floor and the remaining four (4) shelves at 17" O.C. at the balance of the shelving.

Accessories

- 2 ea. Model 1436C shelves. Locate at the top and the bottom of the units.
- 3 ea. Model QA1436C shelves.
- 4 ea. Model P86-E posts.

ITEM NO. 07 - LINEN STORAGE SHELVING (1 LOT REQUIRED)

Eagle Group model Quad TRUSS linen storage shelves. Locate the bottom shelf at 10" above the finish floor and the remaining four (4) shelves at 17" O.C. at the balance of the shelving.

Accessories

- 2 ea. Model 1430C shelves. Locate at the top and the bottom of the units.
- 3 ea. Model QA1430C shelves.
- 4 ea. Model P86-E posts.

ITEM NO. 08 - WALK-IN COOLER & FREEZER (1 REQUIRED)

The walk-in cooler & freezer to be manufactured by Thermo-Kool. The walk-in cooler & freezer to be 27'-0" x 14'-8 1/2" x 8'-7" high per the drawings and proposal number Q38450-50. Provide a 4" thick insulated panel floor. Provide stucco aluminum on the exterior and interior of the unit and white stucco aluminum on the ceiling.

Features

- 01 Provide two (2) hinges on the doors.
- 02 Two (2) vapor proof lights.
- 03 Foot treadle at the doors.
- 04 One (1) 14" x 24" heated peep window in each door.
- 05 Two (2) pressure relief vents.
- 06 EC motors on the evaporator coils.
- 07 Provide wall trim and a closure panel constructed of stucco aluminum.
- 08 Provide all necessary refrigeration lines (hard copper), refrigerant and labor from the evaporator to the refrigeration rack system located on the ground.
- 09 All refrigerant line runs to be on the exterior of the walk-in with short runs only from the evaporators to above the ceiling. Seal the holes for the lines

- with a spray foam insulation to make an air-tight seal. Provide stainless steel or chrome covers at all exposed penetrations.
- 10 14 Gauge fully welded stainless steel bumper rails pre drawings and details on the exposed exterior walls and doors.

Accessories

- 1 ea. ColdZone model MPL-2CZ refrigerated rack system per proposal number 22-1153. Locate the rack building roof per the drawings. Verify the location at the job site.
- 1 ea. 208 volts, three phase.
- 2 ea. Berner model ASD36078 swing door. Install per the Manufactures requirements with stainless steel screws.
- 8 ea. Component Hardware Group model LED48X754-CL-N Keil LED light fixtures with bulbs as located per the drawings. Conduit shall not be run on the interior of the units except what is required to connect to the lights. Seal the holes for the conduit and inside the conduit with a spray foam insulation to make an air-tight seal.

ITEM NO. 09 - WALK-IN SHELVING (1 LOT REQUIRED)

Eagle Group QuadPLUS walk-in shelves. Provide units of four (4) shelves with 74" high posts at the evaporators and units of five (5) shelves with 86" high posts at the balance of the walk-ins. Mount the bottom shelf at 10" above the finish floor. Mount the remaining shelves at 17" on center. Provide units of three (3) shelves with 86" high posts and footplates at the dunnage racks. Mount the bottom shelf at 44" above the finish floor. Mount the remaining shelves at 17" on center.

Accessories

- 4 ea. Model QPF-2136E-GL shelves. Locate at the top and the bottom of the units.
- 4 ea. Model QPF-QA2136E-GL shelves.
- 17 ea. Model QPF-2142E-GL shelves. Locate at the top and the bottom of the units.
- 17 ea. Model QPF-QA2142E-GL shelves.
- 30 ea. Model QPF-2148E-GL shelves. Locate at the top and the bottom of the units.
- 34 ea. Model QPF-QA2148E-GL shelves.
- 4 ea. Model QPF-2154E-GL shelves. Locate at the top and the bottom of the units.
- 6 ea. Model QPF-QA2154E-GL shelves.
- 32 ea. Model P74-E posts.
- 72 ea. Model P86-E posts.
- 12 ea. Model FOOT-PLATE-S foot plates. Mount the foot plates to the floor with stainless steel fasteners. Locate the foot plates on the units at the dunnage racks.

ITEM NO. 10 - NUMBER NOT USED

ITEM NO. 11 - MOBILE DUNNAGE RACKS (1 LOT)

New Age dunnage racks with all the standard features.

Accessories

- 1 ea. Model 1204.
- 2 ea. Model 1205.

- 3 sets. Provide with all swivel polyurethane tired casters with brakes.
- 3 ea. Model 1174 handles. Shorten the handle to 42" above the finished floor installed height.

ITEM NO. 12 - CAN RACK (2 REQUIRED)

New Age model 1250 with all the standard features.

ITEM NO. 13 - STORAGE SHELVING (1 LOT REQUIRED)

Eagle Group model Quad TRUSS storage shelves. Locate the bottom shelf at 10" above the finish floor and the remaining four (4) shelves at 17" O.C. at the balance of the shelving. Provide units of three (3) shelves with 86" high posts and footplates at the dunnage racks. Mount the bottom shelf at 44" above the finish floor. Mount the remaining shelves at 17" on center.

Accessories

- 8 ea. Model 2136C shelves. Locate at the top and the bottom of the units.
- 12 ea. Model QA2136C shelves.
- 9 ea. Model 2142C shelves. Locate at the top and the bottom of the units.
- 9 ea. Model QA2142C shelves.
- 22 ea. Model 2148C shelves. Locate at the top and the bottom of the units.
- 24 ea. Model QA2148C shelves.
- 72 ea. Model 86P posts.
- 12 ea. Model FOOT-PLATE-S foot plates. Mount the foot plates to the floor with stainless steel fasteners. Locate the foot plates on the units at the dunnage racks.

ITEM NO. 14 - MOBILE DUNNAGE RACKS (1 LOT)

New Age dunnage racks with all the standard features.

Accessories

- 1 ea. Model 1204.
- 2 ea. Model 1205.
- 3 sets. Provide with all swivel polyurethane tired casters with brakes.
- 3 ea. Model 1174 handles. Shorten the handle to 42" above the finished floor installed height.

ITEM NO. 15 - CAN RACK (2 REQUIRED)

New Age model 1250 with all the standard features.

ITEM NO. 16 - HAND SINK (6 REQUIRED)

Eagle Group model HSA-10 with all the standard features.

Accessories

- 6 ea. Model 300886 drain assembly.
- 6 ea. Model LRS left and right hand splash on the sinks.
- 6 ea. Component Hardware Group, Inc. model KL45-4002-RE1 faucets.
- 6 ea. Component Hardware Group, Inc. model KN91-0100 quik-wash faucet control. Install on the faucets.
- 1 ea. Model eye wash attachment. Install on the sink near item 28.

ITEM NO. 17 - MOBILE BREAD RACK BY THE VENDOR

ITEM NO. 18 - ICE MAKER (1 REQUIRED)

Manitowoc model IYT0420A with all the standard features.

Accessories

- 1 ea. 120 volts, single phase.
- 1 ea. Model D420 ice bin.
- 1 ea. Stainless steel legs.
- 1 ea. Everpure model EV932401 water filter assembly. Mount on the side of the ice maker and bin with stainless steel screws.
- 1 ea. Everpure model EV961222 i2000 replace cartridge.

ITEM NO. 19 - WORK TABLE (1 REQUIRED)

Custom fabricated work table to be constructed per the drawings with a fully welded 14 gauge type 304 stainless steel top. Provide 12 gauge fully welded type 304 stainless steel channel underbracing under the top with fully welded closed ends where they are exposed. Sound deadened between the top and the underbracing.

Features

- 01 Provide with a 8" high x 2" thick backsplash at the rear.
- 02 Provide a 16 gauge type 304 stainless steel finished back on the exposed backsplash. Attach the finished back to the backsplash in a concealed manner with stainless steel fasteners.
- 03 Provide with a 2" turn down with a tight hem at the exposed sides.
- 04 Provide 1 5/8" diameter type 304 stainless steel legs with stainless steel leg sockets and adjustable stainless steel flanged feet. Fully weld the leg sockets the underbracing. Anchor the feet to the floor with stainless steel fasteners.
- 05 Provide a 16 gauge type 304 stainless steel undershelves per the drawings. Turn the undershelves up 2" at walls and high equipment. Fully weld the undershelves to the legs. Provide 12 gauge fully welded type 304 stainless steel channel underbracing under the undershelves. Sound deadened between the undershelves and the underbracing.
- 06 Provide type 304 stainless steel crossrails per the drawings. Fully weld the crossrails to the legs.
- 07 Provide a 1'-0" wide x length indicated on the drawing fully welded 16 gauge stainless steel cantilevered overshef. Mount the overshef 1'-6" above the work surface of the work table with stainless steel screws.
- 08 Support the shelf with 12 gauge type 304 stainless steel angled brackets fully welded to the uprights. Attach the shelf to the brackets with stainless steel acorn nuts in two (2) places at each bracket.

Accessories

- 1 ea. Edlund model G-2S can opener. Edlund model G-2S manual can opener. Mount to the table in the location shown on the drawings with stainless steel screws per the manufactures requirements. Remove the exposed screw threads below the table top. Widen the underbracing at the can opener to allow clearance for the mounting screws.
- 1 ea. Edlund model KR-699 knife rack. Provide a 14 gauge type 304 stainless steel bracket for the knife holder. Locate the knife holder per the drawings. Attach the rack to the bracket with Component Hardware model Q37-0250 stainless steel keyhole studs welded to the bracket at the top.

- 1 ea. Component Hardware model S90-0020 drawer assembly. Locate the drawer per the drawings.
- 3 ea. Component Hardware Model R58-1010 electrical outlet box at the microwave oven. Attach the boxes to the overshef with stainless steel fasteners per the manufacturer's requirements. Provide with stainless steel cover plates. Provide and install conduit in an unexposed manner from the box through the shelf upright to a 4x4 junction box mounted below the table top.

ITEM NO. 20 - MOBILE TRAY DRYING RACK (2 REQUIRED)

Metro model PR48VX2-XDR with all the standard features.

ITEM NO. 21 - TRASH CAN (6 REQUIRED)

Carlisle Foodservice Products model 341032 trash can in a gray color. NSF listed.

Accessories

- 6 ea. Model 341033 GY lid for in a gray color. NSF listed.
- 6 ea. Model 3691003 dolly in a black color.

ITEM NO. 22 - MOBILE UTILITY CART (3 REQUIRED)

Lakeside Manufacturing model 422 with all the standard features.

ITEM NO. 23 - MOBILE COOLING RACKS (6 REQUIRED)

New Age model 1306 with all the standard features.

Accessories

- 6 sets. Provide with polyurethane tired casters with brakes.
- 6 ea. Model PB - Perimeter bumpers.

ITEM NO. 24 - VEGETABLE PREP TABLE (1 REQUIRED)

Custom fabricated vegetable prep table to be constructed per the drawings with a fully welded 14 gauge type 304 stainless steel top. Provide 12 gauge fully welded type 304 stainless steel channel underbracing under the top with fully welded closed ends where they are exposed. Sound deadened between the top and the underbracing.

Features

- 01 Provide with a 10" high x 2" thick backsplash at the rear and high equipment. Attach the back splash to the wall with stainless steel screws at a 4'-0" o.c. maximum spacing with 14 gauge stainless steel Z-clips.
- 02 Extend splash at pre-rinse faucet per drawings. Extend counter bracing up to top of extension. Fully weld bracing to counter bracing. Provide with a removable finished back where exposed.
- 03 Provide with a marine edge with a 2" turn down with a tight hem at the exposed sides.
- 04 Provide two (2) 18" x 18" x 10" deep 14 gauge type 304 stainless steel sinks fully welded into the top.
- 05 Provide a 5" high 18 gauge 304 stainless steel removable scrap basket. The bottom is to be perforated with 1/4" diameter holes. Provide two (2) type 304 stainless steel 1" diameter tubular handles running from the back to the front of the basket. Provide four (4) type 304 stainless steel

- 1" tall x 1" diameter tubular legs at the bottom of the basket. The bottom of the legs to be fully welded closed. Fully weld the basket, handles and the legs.
- 06 Provide 1 5/8" diameter type 304 stainless steel legs with stainless steel leg sockets and adjustable stainless steel flanged feet. Anchor the feet to the floor with stainless steel anchors. Fully weld the leg sockets the underbracing. Anchor the feet to the floor with stainless steel fasteners.
- 07 Provide a 16 gauge type 304 stainless steel undershelves per the drawings. Turn the undershelves up 2" at rear. Fully weld the undershelves to the legs. Provide 12 gauge fully welded type 304 stainless steel channel underbracing under the undershelves. Sound deadened between the undershelves and the underbracing.
- 07 Provide type 304 stainless steel crossrails in the locations shown by the drawings. Fully weld the crossrails to the legs.
- 08 Provide two (2) 1'-0" wide x length indicated on the drawing fully welded 16 gauge stainless steel cantilevered overshef. Mount the overshef 1'-6" above the work surface of the work table with stainless steel screws.
- 09 Support the shelf with 12 gauge type 304 stainless steel angled brackets fully welded to the uprights. Attach the shelf to the brackets with stainless steel acorn nuts in two (2) places at each bracket.

Accessories

- 1 ea. T & S model B-0133 pre-rinse faucet.
- 1 ea. T & S model B-0230-K installation kit.
- 1 ea. T & S model B-0156 add-on faucet.
- 1 ea. T & S model B-0109-01 wall bracket. Mount the bracket to the top extension with stainless steel screws.
- 2 ea. Component Hardware model DBN-8000 twist waste valve. Shorten the handle to be flush with the front of the sink bowl. Provide 14 gauge type 304 stainless steel brackets to support the handles. Attach to the sink bottom with stainless steel anchors.
- 1 ea. Edlund model KR-699 knife rack. Provide a 14 gauge type 304 stainless steel bracket for the knife holder. Locate the knife holder per the drawings. Attach the rack to the bracket with Component Hardware model Q37-0250 stainless steel keyhole studs welded to the bracket at the top.
- 1 ea. Component Hardware model S90-0020 drawer assembly. Locate the drawer per the drawings.

ITEM NO. 25 - MOBILE PAN RACK (3 REQUIRED)

Eagle Group Model QUADPLUS mobile pan rack. Provide each unit four (4) shelves with 74" high posts. Mount the bottom shelf at 10" above the finish floor. Mount the remaining shelves at 17" on center.

Accessories

- 12 ea. Model QPF-2436E-GL shelves.
- 12 ea. Model CP74-E posts.
- 12 ea. Model CSB5P-300 casters with brakes.

ITEM NO. 26 - NUMBER NOT USED

ITEM NO. 27 - NUMBER NOT USED

ITEM NO. 28 - MOBILE ROTATING CONVECTION OVEN (2 REQUIRED)

Baxter Manufacturing model OV310G with all the standard features.

Accessories

- 2 ea. Model HTSNAT natural gas burners.
- 2 ea. Model GHSSTD standard gas connection.
- 2 ea. 120 volts, single phase.
- 2 ea. End-load twelve (12) pan capacity.
- 2 ea. Model STAND-12PAN stainless steel stand base.
- 2 sets Polyurethane casters with brakes.
- 2 ea. Provide with Dormont model 1675KIT2S48PS gas hoses. Provide to the plumbing contractor for installation.

ITEM NO. 29 - MOBILE RANGE (1 REQUIRED)

Montague Company model C24-5 with all the standard features.

Accessories

- 1 ea. Natural gas
- 1 ea. Rear gas connection.
- 1 ea. 1" gas regulator.
- 1 ea. 24 equipment stand.
- 1 ea. Polyurethane tired casters with brakes.
- 1 ea. Dormont model 16100KIT2S48PS gas connector hose kit. Provide to the plumbing contractor for installation.

ITEM NO. 30 - NUMBER NOT USED

ITEM NO. 31 - IVARIO PRO 2-S (1 REQUIRED)

Rational model IVARIOPR 2-S with all the standard features.

Accessories

- 1 ea. 208 volts, three phase.
- 1 lot Model CAP Chef assistance program.
- 1 lot Model 9999.2220 certified installation.
- 1 lot Model 9999.2002 pre-installation site consultation.
- 1 lot Model 9999.1009 extended travel zones.
- 1 ea. Model 8730.1565US installation kit.
- 1 ea. Model 1900.1154US water filter system. Mount the unit on the side of the unit with stainless steel screws.
- 1 lot Model 9999.2271 certified installation.
- 1 ea. Model 1900.1155US replacement cartridges.
- 1 ea. Model 60.75.836 stand.
- 1 kt. Model 60.31.433 caster kit.
- 1 ea. Model 87.00.732US equipment placement system. Attach to the floor per the Manufacture's requirements.
- 1 ea. Model 60.73.920 cleaning kit.
- 1 st. Model 87.00.742 accessory package.
- 1 ea. Model 60.73.586 scoop.
- 1 ea. Model 60.74.666 strainer.

ITEM NO. 32 - IVARIO PRO L (1 REQUIRED)

Rational model IVARIOPR L with all the standard features.

Accessories

- 1 ea. 208 volts, three phase.
- 1 lot Model CAP Chef assistance program.
- 1 lot Model 9999.2221 certified installation.
- 1 lot Model 9999.2002 pre-installation site consultation.
- 1 lot Model 9999.1009 extended travel zones.
- 1 ea. Model 8730.1565US installation kit.
- 1 ea. Model 1900.1154US water filter system. Mount the unit on the side of the unit with stainless steel screws.
- 1 lot Model 9999.2271 certified installation.
- 1 ea. Model 1900.1155US replacement cartridges.
- 1 kt. Model 60.71.267 caster kit.
- 1 ea. Model 87.00.732US equipment placement system. Attach to the floor per the Manufacture's requirements.
- 1 ea. Model 60.73.920 cleaning kit.
- 1 st. Model 60.71.643 scraper.
- 1 ea. Model 60.73.348 scoop.
- 1 ea. Model 60.73.586 scoop.

ITEM NO. 33 - MOBILE COMBI-OVEN (1 REQUIRED)

Rational model ICP 6-FUL/10-FULLL E with all the standard features.

Accessories

- 1 ea. 208 volts, three phase.
- 1 ea. Hinge the doors on the right.
- 1 kt. Model 60.74.725 combi-duo staking kit.
- 1 ea. Model 60.31.635 mobile combi-duo kit.
- 1 lot CAP program.
- 1 lot Model 9999.2271 certified installation.
- 1 ea. Model 8720.1569US installation kit.
- 2 ea. Model 60.76.317 external core temperature probe.
- 1 cs. Model 56.01.535 detergent tablets.
- 1 cs. Model 56.00.598 defoamer tablets.
- 1 cs. Model 56.00.562 care tablets.
- 1 ea. Model 1900.1150US water filter system. Mount the unit on the side of the unit with stainless steel screws.
- 2 ea. Model 1900.1155US replacement cartridges.
- 1 ea. Provide with Dormont model W50BP2Q48PS water hose. Provide to the plumbing contractor for installation.
- 3 ea. Provide with Dormont model W50BP2@48 water hose. Provide to the plumbing contractor for installation.

ITEM NO. 34 - VENTILATOR BY THE MECHANICAL CONTRACTOR

ITEM NO. 35 - FIRE SUPPRESSION SYSTEM BY THE MECHANICAL CONTRACTOR

ITEM NO. 36 - MOBILE PROOF/HOT CABINET (2 REQUIRED)

CresCor model 121-PH-UA-11D with all the standard features.

Accessories

- 2 ea. 120 volts, single phase.
- 2 ea. Model 1405-135 perimeter bumper
- 2 sets Provide with 5" polyurethane casters with brakes on all the casters.

ITEM NO. 37 - COOK'S TABLE (1 REQUIRED)

Custom fabricated cook's table to be constructed per the drawings with a fully welded 14 gauge type 304 stainless steel top. Provide 12 gauge fully welded type 304 stainless steel channel underbracing under the top with fully welded closed ends where they are exposed. Sound deadened between the top and the underbracing.

Features

Features

- 01 Provide with a 8" high x 2" thick backsplash at the rear.
- 02 Provide a 16 gauge type 304 stainless steel finished back on the exposed backsplash. Attach the finished back to the backsplash in a concealed manner with stainless steel fasteners.
- 03 Provide with a 2" turn down with a tight hem at the exposed sides.
- 04 Provide one (1) 18" front-to-back x 18" wide x 10" deep sink compartment constructed with 14 gauge type 304 stainless steel fully welded integrally into the top.
- 05 Provide 1 5/8" diameter type 304 stainless steel legs with stainless steel leg sockets and adjustable stainless steel flanged feet. Anchor the feet to the floor with stainless steel anchors. Fully weld the leg sockets the underbracing. Anchor the feet to the floor with stainless steel fasteners.
- 06 Provide a 16 gauge type 304 stainless steel undershelves per the drawings. Turn the undershelves up 2" at walls and high equipment. Fully weld the undershelves to the legs. Provide 12 gauge fully welded type 304 stainless steel channel underbracing under the undershelves. Sound deadened between the undershelves and the underbracing.
- 07 Provide type 304 stainless steel crossrails per the drawings. Fully weld the crossrails to the legs.
- 08 Provide one (1) 1'-0" wide x length indicated on the drawing fully welded 16 gauge stainless steel cantilevered overshelves. Mount the overshelf 1'-6" above the work surface of the work table with stainless steel screws.
- 08 Support the shelf with 12 gauge type 304 stainless steel angled brackets fully welded to the uprights. Attach the shelf to the brackets with stainless steel acorn nuts in two (2) places at each bracket.

Accessories

- 1 ea. T & S model B-0320 faucets.
- 1 ea. Component Hardware model DBN-8000 twist waste valve. Shorten the handle to be flush with the front of the sink bowl. Provide 14 gauge type 304 stainless steel brackets to support the handles. Attach to the sink bottom with stainless steel anchors.
- 1 ea. Advance Tabco model SW-144 wall mounted pot rack. Modify the length per the drawings.
- 1 ea. Edlund model G-2S can opener. Edlund model G-2S manual can opener. Mount to the table in the location shown on the drawings with stainless steel screws per the manufactures requirements. Remove the exposed screw threads below the table top. Widen the underbracing at the can opener to allow clearance for the mounting screws.
- 1 ea. Edlund model KR-699 knife rack. Provide a 14 gauge type 304 stainless steel bracket for the knife holder. Locate the knife holder per the drawings. Attach the rack to the bracket with Component Hardware model Q37-0250 stainless steel keyhole studs welded to the bracket at the top.
- 1 ea. Component Hardware model S90-0020 drawer assembly. Locate the drawer per the drawings.
- 2 ea. Component Hardware Model R58-1010 electrical outlet box at the microwave oven. Attach the boxes to the overshelf with stainless steel

fasteners per the manufacturer's requirements. Provide with stainless steel cover plates. Provide and install conduit in an unexposed manner from the box through the shelf upright to a 4x4 junction box mounted below the table top.

ITEM NO. 38 - PREP TABLE (1 REQUIRED)

Custom fabricated prep table to be constructed per the drawings with a fully welded 14 gauge type 304 stainless steel top. Provide 12 gauge fully welded type 304 stainless steel channel underbracing under the top with fully welded closed ends where they are exposed. Sound deadened between the top and the underbracing.

Features

- 01 Provide with a 10" high x 2" thick backsplash at the rear.
- 02 Provide a 16 gauge type 304 stainless steel finished back on the exposed backsplash. Attach the finished back to the backsplash in a concealed manner with stainless steel fasteners.
- 03 Extend splash at pre-rinse faucet per drawings. Extend counter bracing up to top of extension. Fully weld bracing to counter bracing. Provide with a removable finished back where exposed.
- 04 Provide with a marine edge with a 2" turn down with a tight hem at the exposed sides.
- 05 Provide two (2) 18" x 18" x 10" deep 14 gauge type 304 stainless steel sinks fully welded into the top.
- 06 Provide a 5" high 18 gauge 304 stainless steel removable scrap basket. The bottom is to be perforated with 1/4" diameter holes. Provide two (2) type 304 stainless steel 1" diameter tubular handles running from the back to the front of the basket. Provide four (4) type 304 stainless steel 1" tall x 1" diameter tubular legs at the bottom of the basket. The bottom of the legs to be fully welded closed. Fully weld the basket, handles and the legs.
- 07 Provide 1 5/8" diameter type 304 stainless steel legs with stainless steel leg sockets and adjustable stainless steel flanged feet. Anchor the feet to the floor with stainless steel anchors. Fully weld the leg sockets the underbracing. Anchor the feet to the floor with stainless steel fasteners.
- 08 Provide a 16 gauge type 304 stainless steel undershelves per the drawings. Turn the undershelves up 2" at rear. Fully weld the undershelves to the legs. Provide 12 gauge fully welded type 304 stainless steel channel underbracing under the undershelves. Sound deadened between the undershelves and the underbracing.
- 07 Provide type 304 stainless steel crossrails in the locations shown by the drawings. Fully weld the crossrails to the legs.
- 08 Provide two (2) 1'-0" wide x length indicated on the drawing fully welded 16 gauge stainless steel cantilevered overshelf. Mount the overshelf 1'-6" above the work surface of the work table with stainless steel screws.
- 09 Support the shelf with 12 gauge type 304 stainless steel angled brackets fully welded to the uprights. Attach the shelf to the brackets with stainless steel acorn nuts in two (2) places at each bracket.

Accessories

- 1 ea. T & S model B-0133 pre-rinse faucet.
- 1 ea. T & S model B-0230-K installation kit.
- 1 ea. T & S model B-0156 add-on faucet.
- 1 ea. T & S model B-0109-01 wall bracket. Mount the bracket to the top extension with stainless steel screws.

- 2 ea. Component Hardware model DBN-8000 twist waste valve. Shorten the handle to be flush with the front of the sink bowl. Provide 14 gauge type 304 stainless steel brackets to support the handles. Attach to the sink bottom with stainless steel anchors.
- 1 ea. Edlund model KR-699 knife rack. Provide a 14 gauge type 304 stainless steel bracket for the knife holder. Locate the knife holder per the drawings. Attach the rack to the bracket with Component Hardware model Q37-0250 stainless steel keyhole studs welded to the bracket at the top.
- 1 ea. Component Hardware model S90-0020 drawer assembly. Locate the drawer per the drawings.
- 2 ea. Component Hardware Model R58-1010 electrical outlet box at the microwave oven. Attach the boxes to the overself with stainless steel fasteners per the manufacturer's requirements. Provide with stainless steel cover plates. Provide and install conduit in an unexposed manner from the box through the shelf upright to a 4x4 junction box mounted below the table top.

ITEM NO. 39 - CLEAN DISHTABLE & POT SINK (1 REQUIRED)

Custom fabricated clean dishtable & pot sink to be constructed per drawings with a fully welded 14 gauge type 304 stainless steel top. Provide 12 gauge fully welded type 304 stainless steel channel underbracing under top with fully welded closed ends where they are exposed. Sound deadened between top and underbracing.

Features:

- 01 Provide with a 10" high x 2" thick backsplash at walls. Attach back splash to wall with stainless steel screws at a 4'-0" o.c. maximum spacing with 14 gauge stainless steel Z-clips.
- 02 Provide with a 3" high rolled rim at exposed sides. Locate top of rolled rim 3'-1" above finish floor.
- 03 Provide three (3) 26 1/2" front-to-back x 24" x wide x 11" deep sink compartments constructed with 14 gauge type 304 stainless steel fully welded integrally into the top.
- 04 Provide type 304 stainless steel legs with stainless steel leg sockets and adjustable stainless steel bullet feet. Fully weld the leg sockets the underbracing.
- 05 Provide a 16 gauge type 304 stainless steel undershelves per the drawings. Turn the undershelves up 2" at rear and high equipment. Fully weld the undershelves to the legs. Provide 12 gauge fully welded type 304 stainless steel channel underbracing under the undershelves. Sound deadened between the undershelves and the underbracing.
- 06 Provide type 304 stainless steel crossrails per the drawings. Fully weld the crossrails to the legs.
- 07 Provide 1'-1" wide x length indicated on the drawing x 1" diameter fully welded stainless steel three-bar wall shelf at the sinks. Mount the rail shelf 1'-9" above the work surface.
- 08 Support the shelf with 12 gauge type 304 stainless steel angled brackets fully welded to the uprights
- 09 Provide a 14 gauge type 304 stainless steel wall panel behind the shelf per the drawings. Attach the panel to the wall with industrial adhesive.

Accessories

- 2 ea. T & S model B-0290 faucets.
- 3 ea. Component Hardware model DBN-8000 twist waste valve. Shorten the handle to be flush with the front of the sink bowl. Provide 14 gauge type

- 304 stainless steel brackets to support the handles. Attach to the sink bottom with stainless steel anchors.
- 3 ea. Component Hardware model J19-4962 brackets.

ITEM NO. 40 - BACK-UP COUNTER (1 REQUIRED)

Custom fabricated back-up counter to be constructed per the drawings with a fully welded 14 gauge type 304 stainless steel top. Provide 12 gauge fully welded type 304 stainless steel channel underbracing under the top with fully welded closed ends where they are exposed. Sound deadened between the top and the underbracing.

Features

- 01 Provide with an 8" high x 1" thick backsplash at the walls and high equipment. Extend the top through the pass-through window.
- 02 Provide with a 2" turn down with a tight hem at the exposed sides.
- 02 Provide one (1) 15" front-to-back x 12" wide x 10" deep sink compartment constructed with 14 gauge type 304 stainless steel fully welded integrally into the top.
- 04 Provide a 16 gauge type 304 stainless steel fully welded counter body with a 16 gauge type 304 stainless steel fully welded undershelves per the drawing elevations. Provide 12 gauge type 304 stainless steel channel underbracing under the undershelves. Sound deadened between the undershelves and the underbracing. Notch the undershelf around the floor sink.
- 05 Provide a 16 gauge type 304 stainless steel double pan hinged doors per the elevations. Fully weld the corners on the doors.
- 06 Provide a 12 gauge type 304 stainless steel fully welded 4" high curb at the counter body. Seal the curb to the wall and floor with silicone caulking. Notch the floor sink around the floor sink.

Accessories

- 1 ea. T & S model B-0320 faucet.
- 1 ea. Component Hardware model DBN-8000 twist waste valve. Shorten the handle to be flush with the front of the sink bowl. Provide 14 gauge type 304 stainless steel brackets to support the handles. Attach to the sink bottom with stainless steel anchors.

ITEM NO. 41 - VENTLESS DISHWASHER & BOOSTER HEATER (1 REQUIRED)

CMA model CMA-180-VL TALL with all the standard features.

Accessories

- 1 ea. 208 volts, three phase.
- 1 ea. Single point electrical connection.
- 1 ea. Provide with a built-in booster heater.
- 1 ea. Drain water tempering kit.

ITEM NO. 42 - SOILED DISHTABLE (1 REQUIRED)

Custom fabricated soiled dishtable to be constructed per drawings with a fully welded 14 gauge type 304 stainless steel top. Provide 12 gauge fully welded type 304 stainless steel channel underbracing under top with fully welded closed ends where they are exposed. Sound deadened between the top and the underbracing. Extend the top through the pass-through window. Provide a 1" high marine edge at the opening.

Features:

- 01 Provide with a 10" high x 2" thick backsplash at walls. Attach back splash to wall with stainless steel screws at a 4'-0" o.c. maximum spacing with 14 gauge stainless steel Z-clips.
- 02 Provide with a 3" high rolled rim at exposed sides. Locate top of rolled rim 3'-1" above finish floor.
- 03 Provide a 1'-9" x 1'-9" x 12" deep 14 gauge type 304 stainless steel scrap sink welded integrally into top and 12 gauge type 304 stainless steel fully welded rack guide.
- 04 Provide a 5" high 18 gauge 304 stainless steel removable scrap basket. Bottom is to be perforated with 1/4" diameter holes. Provide two (2) type 304 stainless steel 1" diameter tubular handles running from back to front of basket. Provide four (4) type 304 stainless steel 1" tall x 1" diameter tubular legs at bottom of basket. Bottom of legs to be fully welded closed. Fully weld basket, handles and legs.
- 05 Provide an 8" wide x depth per drawings scrap trough at scrap sink. Slope the trough to scrap sink per drawings. Provide a hinged silver saver in trough located near scrap sink. Pre-pipe trough per drawings and details.
- 06 Provide a 6" wide x 2" deep 14 gauge type 304 stainless steel scupper drain welded integrally into top.
- 07 Provide type 304 stainless steel legs with stainless steel leg sockets and adjustable stainless steel bullet feet. Fully weld leg sockets to underbracing.
- 08 Provide type 304 stainless steel crossrails per drawings. Fully weld crossrails to legs.
- 09 Provide trash can space under top per drawings.
- 10 Provide a 4'-10" long cantilevered 16 gauge type 304 stainless steel slanted rack shelf with a 4'-10" long x 1" diameter rail fully welded stainless steel cantilevered rack storage shelf. Provide adjustable socket mounts on uprights for shelves. Attach uprights to wall at upright top. Mount slant rack shelf 1'-4" above rolled rim and mount rack storage shelf 1'-9" above slanted rack shelf.

Accessories:

- 1 ea. Component Hardware model E38-1012 basket drain in scrap sink.
- 1 ea. Component Hardware model E18-1822 basket drain in scupper drain.
- 1 ea. Fisher model 2906 water inlet.
- 1 ea. Fisher model 2905 water inlet.
- 1 ea. T & S model B-0457 vacuum breaker.

ITEM NO. 43 - HOSE REEL (1 REQUIRED)

T & S Brass model B-1433-01M-QDS hose reel with standard features. Mount to wall with stainless steel fasteners near ceiling per manufacturer's requirements. Center spray valve over scrap sink.

Accessories:

- 2 ea. Model B-CVH1-2 check valves. Provide to plumbing contractor for installation into water lines.
- 2 ea. Model B-0109-01 wall brackets. Mount to wall with stainless steel screws.

ITEM NO. 44 - BACK-UP COUNTER (1 REQUIRED)

Custom fabricated pizza cutting counter to be constructed per the drawings with a fully welded 14 gauge type 304 stainless steel top. Provide 12 gauge fully welded type 304

stainless steel channel underbracing under the top with fully welded closed ends where they are exposed. Sound deadened between the top and the underbracing.

Features

- 01 Provide with an 8" high x 1" thick backsplash at the walls and high equipment. Extend the top through the pass-through window.
- 02 Provide with a 2" turn down with a tight hem at the exposed sides.
- 03 Provide a 3/4" deep fully welded recess in the top for the cutting board. Fully weld stainless steel tabs in the recess to stabilize the cutting board per the drawings.
- 04 Provide a 16 gauge type 304 stainless steel fully welded counter body with a 16 gauge type 304 stainless steel fully welded undershelves per the drawing elevations. Provide 12 gauge type 304 stainless steel channel underbracing under the undershelves. Sound deadened between the undershelves and the underbracing.
- 05 Provide a 16 gauge type 304 stainless steel double pan hinged doors per the elevations. Fully weld the corners on the doors.
- 06 Provide a 12 gauge type 304 stainless steel fully welded 4" high curb at the counter body. Seal the curb to the wall and floor with silicone caulking. Notch the floor sink around the floor sink.

Accessories

- 1 ea. T & S model B-0320 faucet.
- 1 ea. Component Hardware model DBN-8000 twist waste valve. Shorten the handle to be flush with the front of the sink bowl. Provide 14 gauge type 304 stainless steel brackets to support the handles. Attach to the sink bottom with stainless steel anchors.

ITEM NO. 45 - MOBILE HOT CABINET (2 REQUIRED)

Continental Refrigerator model DL1WE-SS-HD with all the standard features.

Accessories

- 2 ea. Hinge the doors per the drawings.
- 2 ea. 208 volts, single phase with a cord and plug.
- 2 ea. Model 50-P008A-E universal type pan slides.
- 2 ea. Space all slides equally throughout the cabinets.
- 2 sets 5" polyurethane casters with brakes on all casters.

ITEM NO. 46 - MOBILE REFRIGERATOR (2 REQUIRED)

Continental Refrigerator model D1RESNSSHD with all the standard features.

Accessories

- 2 ea. Hinge the doors per the drawings.
- 2 ea. 120 volts, single phase with a cord and plug.
- 2 ea. Model 50-P008A-E universal type pan slides.
- 2 ea. Space all slides equally throughout the cabinets.
- 2 sets 5" polyurethane casters with brakes on all casters.

ITEM NO. 47 - MOBILE PASS-THRU REFRIGERATOR (2 REQUIRED)

Continental Refrigerator model D1RENSSPTHD with all the standard features.

Accessories

- 2 ea. Hinge the doors per the drawings.
- 2 ea. 120 volts, single phase with a cord and plug.
- 4 ea. Half height glass doors on the kitchen side.
- 2 ea. Model 50-P008A-E universal type pan slides.
- 2 ea. Space all slides equally throughout the cabinets.
- 2 sets 5" polyurethane casters with brakes on all casters.

ITEM NO. 48 - MOBILE PASS-THRU HOT CABINET (2 REQUIRED)

Continental Refrigerator model DL1WE-SS-PT-HD with all the standard features.

Accessories

- 2 ea. Hinge the doors per the drawings.
- 2 ea. 208 volts, single phase with a cord and plug.
- 4 ea. Half height glass doors on the kitchen side.
- 2 ea. Model 50-P008A-E universal type pan slides.
- 2 ea. Space all slides equally throughout the cabinets.
- 2 sets 5" polyurethane casters with brakes on all casters.

ITEM NO. 49 - NUMBER NOT USED

ITEM NO. 50 - ROLL-IN HOT CABINET (1 REQUIRED)

Continental Refrigerator model DL1WI-SS with all the standard features.

Accessories

- 1 ea. Hinge the doors per the drawings.
- 1 ea. 208 volts, single phase with a cord and plug.

ITEM NO. 51 - BACK-UP COUNTER (1 REQUIRED)

Custom fabricated back-up counter to be constructed per the drawings with a fully welded 14 gauge type 304 stainless steel top. Provide 12 gauge fully welded type 304 stainless steel channel underbracing under the top with fully welded closed ends where they are exposed. Sound deadened between the top and the underbracing.

Features

- 01 Provide with an 8" high x 1" thick backsplash at the walls and high equipment. Extend the top through the pass-through window.
- 02 Provide with a 2" turn down with a tight hem at the exposed sides.
- 03 Provide a 16 gauge type 304 stainless steel fully welded counter body with a 16 gauge type 304 stainless steel fully welded undershelves per the drawing elevations. Provide 12 gauge type 304 stainless steel channel underbracing under the undershelves. Sound deadened between the undershelves and the underbracing. Notch the undershelf around the floor sink.
- 04 Provide a 16 gauge type 304 stainless steel double pan hinged doors per the elevations. Fully weld the corners on the doors.
- 05 Provide a 12 gauge type 304 stainless steel fully welded 4" high curb at the counter body. Seal the curb to the wall and floor with silicone caulking.

ITEM NO. 52 - NUMBER NOT USED

ITEM NO. 53 - MOBILE MEXICAN SERVING COUNTER (1 REQUIRED)

Custom fabricated mobile mexican serving counter to be constructed per the drawings with a fully welded 14 gauge type 304 stainless steel top. Provide 12 gauge fully welded type 304 stainless steel channel underbracing under the top with fully welded closed ends where they are exposed. Sound deadened between the top and the underbracing.

Features

- 01 Provide with a 2" turn down with a tight hem at the sides.
- 02 Provide a 16 gauge type 304 stainless steel fully welded counter body with a 16 gauge type 304 stainless steel fully welded undershelves per the drawing elevations. Provide 12 gauge type 304 stainless steel channel underbracing under the undershelves. Sound deadened between the undershelves and the underbracing. Notch the undershelf around the floor sink.
- 03 Provide a 16 gauge type 304 stainless steel double pan hinged doors per the elevations. Fully weld the corners on the panels.
- 04 Provide a 16 gauge type 304 stainless steel double pan hinged doors with fully welded louvers per the elevations. Fully weld the corners on the panels.
- 05 Provide a Component Hardware Group, Inc. model P46-1012 pull at the doors. Attach with stainless steel screws.
- 06 Provide a Component Hardware Group, Inc. model M32-2401 magnetic catches at the doors. Install the catch per the manufactures requirements.
- 07 Provide steel j-boxes on the counter body per the drawings and elevations for switches and controls. Provide with stainless steel cover plates. Weld the j-boxes to the counter.
- 08 Provide removable 18 gauge stainless steel panels on the counter sides per the elevations. Provide a 6" x 6" one piece panel at the corners. Attach the panels to the counter with 14 gauge stainless steel Z-clips at the bottom of the panels.
- 09 Provide a quarter-turn ball valve drain valve in an 18 gauge fully welded stainless steel recess per the drawings. Pre-pipe the hot well drain to the valve and the drain line to the floor drain per current codes.
- 10 Provide polyurethane tired casters with brakes.

Accessories

- 1 ea. T & S model B-0208 faucet. Provide a hot water indicator on the handle.
- 1 Lot G.A. Systems Inc. sneeze guard per proposal number 5840 - Memorial and the drawings in a brushed stainless steel finish. Provide an undercounter mount. Install into the counter top per the manufactures requirements.

ITEM NO. 54 - DROP-IN COLD FOOD WELLS (4 REQUIRED)

Low Temp Industries model DI-2037TA with all the standard features.

Accessories

- 1 ea. 120 volts, single phase.

ITEM NO. 55 - DROP-IN HOT FOOD WELLS (1 REQUIRED)

Low Temp Industries model TW-DW-6 with all the standard features.

Accessories

- 1 ea. 208 volts, single phase.

ITEM NO. 56 - MOBILE PIZZA SERVING COUNTER (1 REQUIRED)

Custom fabricated mobile pizza serving counter to be constructed per the drawings with a fully welded 14 gauge type 304 stainless steel top. Provide 12 gauge fully welded type 304 stainless steel channel underbracing under the top with fully welded closed ends where they are exposed. Sound deadened between the top and the underbracing.

Features

- 01 Provide with a 2" turn down with a tight hem at the sides.
- 02 Provide a 16 gauge type 304 stainless steel fully welded counter body with a 16 gauge type 304 stainless steel fully welded undershelves per the drawing elevations. Provide 12 gauge type 304 stainless steel channel underbracing under the undershelves. Sound deadened between the undershelves and the underbracing. Notch the undershelf around the floor sink.
- 03 Provide a 16 gauge type 304 stainless steel double pan hinged doors per the elevations. Fully weld the corners on the panels.
- 04 Provide a 16 gauge type 304 stainless steel double pan hinged doors with fully welded louvers per the elevations. Fully weld the corners on the panels.
- 05 Provide a Component Hardware Group, Inc. model P46-1012 pull at the doors. Attach with stainless steel screws.
- 06 Provide a Component Hardware Group, Inc. model M32-2401 magnetic catches at the doors. Install the catch per the manufactures requirements.
- 07 Provide steel j-boxes on the counter body per the drawings and elevations for switches and controls. Provide with stainless steel cover plates. Weld the j-boxes to the counter.
- 08 Provide removable 18 gauge stainless steel panels on the counter sides per the elevations. Provide a 6" x 6" one piece panel at the corners. Attach the panels to the counter with 14 gauge stainless steel Z-clips at the bottom of the panels.
- 09 Provide a quarter-turn ball valve drain valve in an 18 gauge fully welded stainless steel recess per the drawings. Pre-pipe the hot well drain to the valve and the drain line to the floor drain per current codes.
- 10 Provide polyurethane tired casters with brakes.

Accessories

- 1 ea. T & S model B-0208 faucet. Provide a hot water indicator on the handle.
- 1 Lot G.A. Systems Inc. sneeze guard per proposal number 5840 - Memorial and the drawings in a brushed stainless steel finish. Provide an undercounter mount. Install into the counter top per the manufactures requirements.

ITEM NO. 57 - DROP-IN PIZZA WARMERS (1 REQUIRED)

Hatco model GRSBF-66I with all the standard features.

Accessories

- 1 ea. 120 volts, single phase.
- 1 ea. Model GRSB-FLUSH-ITC flush mount electronic control box. Mount in the counter face per the drawings.
- 1 ea. Model STANDARD flush mounted bezel with a stainless steel finish.
- 1 ea. Model COND-6 6" conduit.

ITEM NO. 58 - DROP-IN HOT FOOD WELLS (1 REQUIRED)

Low Temp Industries model TW-DW-3 with all the standard features.

Accessories

1 ea. 208 volts, single phase.

ITEM NO. 59 - MOBILE DELI SERVING COUNTER (1 REQUIRED)

Custom fabricated mobile deli serving counter to be constructed per the drawings with a fully welded 14 gauge type 304 stainless steel top. Provide 12 gauge fully welded type 304 stainless steel channel underbracing under the top with fully welded closed ends where they are exposed. Sound deadened between the top and the underbracing.

Features

- 01 Provide with a 2" turn down with a tight hem at the sides.
- 02 Provide a 16 gauge type 304 stainless steel fully welded counter body with a 16 gauge type 304 stainless steel fully welded undershelves per the drawing elevations. Provide 12 gauge type 304 stainless steel channel underbracing under the undershelves. Sound deadened between the undershelves and the underbracing. Notch the undershelf around the floor sink.
- 03 Provide a 16 gauge type 304 stainless steel double pan hinged doors per the elevations. Fully weld the corners on the panels.
- 04 Provide a 16 gauge type 304 stainless steel double pan hinged doors with fully welded louvers per the elevations. Fully weld the corners on the panels.
- 05 Provide a Component Hardware Group, Inc. model P46-1012 pull at the doors. Attach with stainless steel screws.
- 06 Provide a Component Hardware Group, Inc. model M32-2401 magnetic catches at the doors. Install the catch per the manufactures requirements.
- 07 Provide steel j-boxes on the counter body per the drawings and elevations for switches and controls. Provide with stainless steel cover plates. Weld the j-boxes to the counter.
- 08 Provide removable 18 gauge stainless steel panels on the counter sides per the elevations. Provide a 6" x 6" one piece panel at the corners. Attach the panels to the counter with 14 gauge stainless steel Z-clips at the bottom of the panels.
- 09 Provide a quarter-turn ball valve drain valve in an 18 gauge fully welded stainless steel recess per the drawings. Pre-pipe the hot well drain to the valve and the drain line to the floor drain per current codes.
- 10 Provide polyurethane tired casters with brakes.

Accessories

- 1 ea. T & S model B-0208 faucet. Provide a hot water indicator on the handle.
- 1 Lot G.A. Systems Inc. sneeze guard per proposal number 5840 - Memorial and the drawings in a brushed stainless steel finish. Provide an undercounter mount. Install into the counter top per the manufactures requirements.

ITEM NO. 60 - ROLL-IN RACK (2 REQUIRED)

New Age model 1637 with all the standard features. Only one (1) shown on the plan.

Accessories

- 2 sets Provide with polyurethane tired casters with brakes.

2 ea. Model PB perimeter bumpers.

ITEM NO. 61 - DROP-IN HOT FOOD WELLS (1 REQUIRED)

Low Temp Industries model TW-DW-2 with all the standard features.

Accessories

1 ea. 208 volts, single phase.

ITEM NO. 62 - DROP-IN COLD FOOD WELLS (2 REQUIRED)

Low Temp Industries model DI-2050TA with all the standard features.

Accessories

2 ea. 120 volts, single phase.

ITEM NO. 63 - PANINI GRILLS (1 REQUIRED)

Vollrath model 40795 with all the standard features.

Accessories

1 ea. 208 volts, single phase.

ITEM NO. 64 - NUMBER NOT USED

ITEM NO. 65 - MOBILE ELECTRIC CONVECTION OVEN AND PROOFER (1 REQUIRED)

Duke Manufacturing model 613-E3XX/PFB-2 with all the standard features.

Accessories

1 ea. 208 volts, three phase.

1 set Casters with brakes.

ITEM NO. 66 - BACK-UP COUNTER (2 REQUIRED)

Custom fabricated pizza cutting counter to be constructed per the drawings with a fully welded 14 gauge type 304 stainless steel top. Provide 12 gauge fully welded type 304 stainless steel channel underbracing under the top with fully welded closed ends where they are exposed. Sound deadened between the top and the underbracing.

Features

- | | |
|----|---|
| 04 | Provide with an 8" high x 1" thick backsplash at the walls and high equipment. Extend the top through the pass-through window. |
| 05 | Provide with a 2" turn down with a tight hem at the exposed sides. |
| 06 | Provide a 3/4" deep fully welded recess in the top for the cutting board. Fully weld stainless steel tabs in the recess to stabilize the cutting board per the drawings. |
| 04 | Provide a 16 gauge type 304 stainless steel fully welded counter body with a 16 gauge type 304 stainless steel fully welded undershelves per the drawing elevations. Provide 12 gauge type 304 stainless steel channel underbracing under the undershelves. Sound deadened between the undershelves and the underbracing. |
| 05 | Provide a 16 gauge type 304 stainless steel double pan hinged doors per the elevations. Fully weld the corners on the doors. |

- 06 Provide a 12 gauge type 304 stainless steel fully welded 4" high curb at the counter body. Seal the curb to the wall and floor with silicone caulking. Notch the floor sink around the floor sink.

Accessories

- 1 ea. Winholt model PT34-2424 cutting board on the counter near item 50.
 1 ea. T & S model B-0320 faucet.
 1 ea. Component Hardware model DBN-8000 twist waste valve. Shorten the handle to be flush with the front of the sink bowl. Provide 14 gauge type 304 stainless steel brackets to support the handles. Attach to the sink bottom with stainless steel anchors.

ITEM NO. 67 - MOBILE ADVENTURE SERVING COUNTER (1 REQUIRED)

Custom fabricated mobile adventure serving counter to be constructed per the drawings with a fully welded 14 gauge type 304 stainless steel top. Provide 12 gauge fully welded type 304 stainless steel channel underbracing under the top with fully welded closed ends where they are exposed. Sound deadened between the top and the underbracing.

Features

- 01 Provide with a 2" turn down with a tight hem at the sides.
 02 Provide a 16 gauge type 304 stainless steel fully welded counter body with a 16 gauge type 304 stainless steel fully welded undershelves per the drawing elevations. Provide 12 gauge type 304 stainless steel channel underbracing under the undershelves. Sound deadened between the undershelves and the underbracing. Notch the undershelf around the floor sink.
 03 Provide a 16 gauge type 304 stainless steel double pan hinged doors per the elevations. Fully weld the corners on the panels.
 04 Provide a 16 gauge type 304 stainless steel double pan hinged doors with fully welded louvers per the elevations. Fully weld the corners on the panels.
 05 Provide a Component Hardware Group, Inc. model P46-1012 pull at the doors. Attach with stainless steel screws.
 06 Provide a Component Hardware Group, Inc. model M32-2401 magnetic catches at the doors. Install the catch per the manufactures requirements.
 07 Provide steel j-boxes on the counter body per the drawings and elevations for switches and controls. Provide with stainless steel cover plates. Weld the j-boxes to the counter.
 08 Provide removable 18 gauge stainless steel panels on the sides per the elevations. Provide a 6" x 6" one piece panel at the corners. Attach the panels to the counter with 14 gauge stainless steel Z-clips at the bottom of the panels.
 09 Provide a quarter-turn ball valve drain valve in an 18 gauge fully welded stainless steel recess per the drawings. Pre-pipe the hot well drain to the valve and the drain line to the floor drain per current codes.
 10 Provide polyurethane tired casters with brakes.

Accessories

- 1 ea. T & S model B-0208 faucet. Provide a hot water indicator on the handle.
 1 Lot G.A. Systems Inc. sneeze guard per proposal number 5840 - Memorial and the drawings in a brushed stainless steel finish. Provide an undercounter mount. Install into the counter top per the manufactures requirements.

ITEM NO. 68 - DROP-IN HOT FOOD WELLS (1 REQUIRED)

Low Temp Industries model TW-DW-5 with all the standard features.

Accessories

1 ea. 208 volts, single phase.

ITEM NO. 69 - MOBILE GRILL SERVING COUNTER (1 REQUIRED)

Custom fabricated mobile grill serving counter to be constructed per the drawings with a fully welded 14 gauge type 304 stainless steel top. Provide 12 gauge fully welded type 304 stainless steel channel underbracing under the top with fully welded closed ends where they are exposed. Sound deadened between the top and the underbracing.

Features

- 01 Provide with a 2" turn down with a tight hem at the sides.
- 02 Provide a 16 gauge type 304 stainless steel fully welded counter body with a 16 gauge type 304 stainless steel fully welded undershelves per the drawing elevations. Provide 12 gauge type 304 stainless steel channel underbracing under the undershelves. Sound deadened between the undershelves and the underbracing. Notch the undershelf around the floor sink.
- 03 Provide a 16 gauge type 304 stainless steel double pan hinged doors per the elevations. Fully weld the corners on the panels.
- 04 Provide a 16 gauge type 304 stainless steel double pan hinged doors with fully welded louvers per the elevations. Fully weld the corners on the panels.
- 05 Provide a Component Hardware Group, Inc. model P46-1012 pull at the doors. Attach with stainless steel screws.
- 06 Provide a Component Hardware Group, Inc. model M32-2401 magnetic catches at the doors. Install the catch per the manufactures requirements.
- 07 Provide steel j-boxes on the counter body per the drawings and elevations for switches and controls. Provide with stainless steel cover plates. Weld the j-boxes to the counter.
- 08 Provide removable 18 gauge stainless steel panels on the counter sides per the elevations. Provide a 6" x 6" one piece panel at the corners. Attach the panels to the counter with 14 gauge stainless steel Z-clips at the bottom of the panels.
- 09 Provide a quarter-turn ball valve drain valve in an 18 gauge fully welded stainless steel recess per the drawings. Pre-pipe the hot well drain to the valve and the drain line to the floor drain per current codes.
- 10 Provide polyurethane tired casters with brakes.

Accessories

- 1 ea. T & S model B-0208 faucet. Provide a hot water indicator on the handle.
- 1 Lot G.A. Systems Inc. sneeze guard per proposal number 5840 - Memorial and the drawings in a brushed stainless steel finish. Provide an undercounter mount. Install into the counter top per the manufactures requirements.

ITEM NO. 70 - MOBILE BREAD CABINET (1 REQUIRED)

NU-VU model HCR18 with all the standard features.

Accessories

1 ea. Hinge the doors on the right.

ITEM NO. 71 - GRAB-N-GO DISPLAY REFRIGERATOR (2 REQUIRED)

Structural Concepts model B4732 with all the standard features.

Accessories

- 2 ea. 208 volts, single phase with a top mounted cord and plug.
- 2 ea. Provide with front access pull-out refrigeration, a front air intake and a rear discharge.
- 2 ea. Clean Sweep automatic condenser coil cleaner.
- 2 ea. Stainless steel interior.
- 2 ea. Provide with a stainless steel exterior.
- 2 ea. Provide with a stainless steel exterior end panel with a mirror interior and with a vinyl edge at the serving counters at the wall.
- 2 ea. Stainless steel end panel with a counter height cut-away insulated glass, mirror interior and with a vinyl edge at the counter sides.
- 2 ea. Provide with a black lower front panel.
- 2 set Provide with LED lights on the shelves.
- 2 ea. Provide with a locking roll-down security cover.
- 2 set Casters.

ITEM NO. 72 - NUMBER NOT USED

ITEM NO. 73 - CASHIER COUNTER (2 REQUIRED)

Custom fabricated cashier serving counter to be constructed with a Corian Artic Ice top. Provide 12 gauge fully welded type 304 stainless steel channel underbracing under the top.

Features

- 01 Provide with a 2" turn down with a tight hem at the exposed sides.
- 02 Provide a 16 gauge type 304 stainless steel fully welded counter body per the drawing elevations.
- 03 Provide a 16 gauge type 304 stainless steel fully welded foot rest per the drawing elevations. Provide 12 gauge type 304 stainless steel fully welded channel underbracing under the foot rest. Sound deadened between the undershelves and the underbracing.
- 04 Provide a 16 gauge type 304 stainless steel fully welded cash drawer per the elevations. Provide a 16 gauge type 304 stainless steel fully welded drawer face. Provide Component Hardware S52 series drawer slides. Weld the slides to the drawer assembly. Provide Component Hardware model P62-1010 pulls. Weld the pulls to the drawer face from the inside of the face.
- 05 Provide removable 18 gauge stainless steel panels on the counter fronts and side per the elevations. Provide a 6" x 6" one piece panel at the corners. Attach the panels to the counter with 14 gauge stainless steel Z-clips at the bottom of the panels.
- 06 Provide polyurethane tired casters with brakes.

ITEM NO. 74 - POS SYSTEM BY THE OWNER

ITEM NO. 75 - CHIP RACK BY THE VENDOR

ITEM NO. 76 - NUMBER NOT USED

ITEM NO. 77 - NUMBER NOT USED

ITEM NO. 78 - NUMBER NOT USED

ITEM NO. 79 - DISPOSABLE CUP DISPENSER (1 REQUIRED)

Dispense-Rite model BFL-R-3SS with all the standard features.

ITEM NO. 80 - SLUSHIE MACHINE (1 REQUIRED)

BUNN model 34000.0081 ULTRA-2 frozen drink machine with all the standard features.

Accessories

1 ea. 120 volts, single phase.

ITEM NO. 81 - TRASH COUNTER BY THE MILLWORK CONTRACTOR

ITEM NO. 82 - MICROWAVE COUNTER BY THE MILLWORK CONTRACTOR

ITEM NO. 83 - FRESH FRUIT COUNTER (1 REQUIRED)

Custom fabricated fresh fruit counter to be constructed per the drawings with a fully welded 14 gauge type 304 stainless steel top. Provide 12 gauge fully welded type 304 stainless steel channel underbracing under the top with fully welded closed ends where they are exposed. Sound deadened between the top and the underbracing.

Features

- | | |
|----|---|
| 01 | Provide with a 2" turn down with a tight hem at the sides. |
| 02 | Provide a 16 gauge type 304 stainless steel fully welded counter body with a 16 gauge type 304 stainless steel fully welded undershelves per the drawing elevations. Provide 12 gauge type 304 stainless steel channel underbracing under the undershelves. Sound deadened between the undershelves and the underbracing. Notch the undershelf around the floor sink. |
| 03 | Provide a 16 gauge type 304 stainless steel double pan hinged doors per the elevations. Fully weld the corners on the panels. |
| 04 | Provide a 16 gauge type 304 stainless steel double pan hinged doors with fully welded louvers per the elevations. Fully weld the corners on the panels. |
| 05 | Provide a Component Hardware Group, Inc. model P46-1012 pull at the doors. Attach with stainless steel screws. |
| 06 | Provide a Component Hardware Group, Inc. model M32-2401 magnetic catches at the doors. Install the catch per the manufactures requirements. |
| 01 | Provide a 12 gauge type 304 stainless steel fully welded 4" high curb at the counter body. Seal the curb to the wall and floor with silicone caulking. Notch the floor sink around the floor sink. |

Accessories

- | | |
|-------|---|
| 1 Lot | G.A. Systems Inc. sneeze guard per proposal number 5840 - Memorial and the drawings in a brushed stainless steel finish. Provide an undercounter mount. Install into the counter top per the manufactures requirements. |
|-------|---|

ITEM NO. 84 - DROP-IN COLD FOOD WELLS (2 REQUIRED)

Low Temp Industries model DI-2037TA with all the standard features.

Accessories
2 ea. 120 volts, single phase.

END OF SECTION